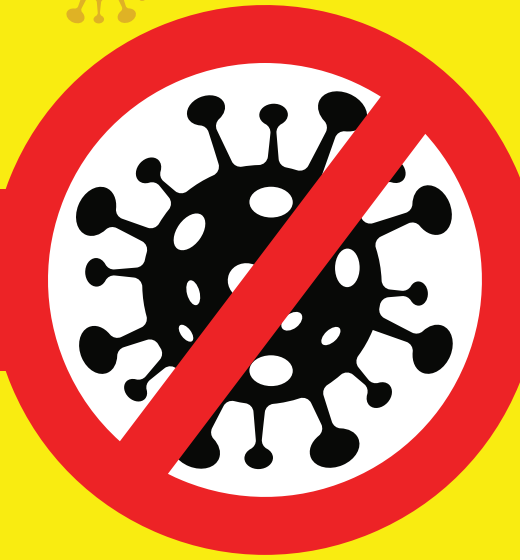


Coronavirus **COVID-19**



STOP THE SPREAD



PREVENTATIVE SIGNS

.....
See our extensive range of COVID-19 specific
preventative signs in line with **WHO & ECDC** guidelines
.....



Contents

HSE Specific Signs.....	3-26
COVID-19 PPE Signage.....	27-31
CIF Specific Signs.....	32-34
Coronavirus Construction Safety Signs.....	35-54
General Safety Signs.....	55-62
Floor Stickers.....	63-68
Social Distancing Floor Tapes.....	69-70
Wall & Window Stickers.....	71-72
Seat Stickers.....	73-75
COVID-19 Hygiene Station.....	76-79
Free Standing Displays.....	80-84
Stencils.....	85-87

HSE Specific Signs



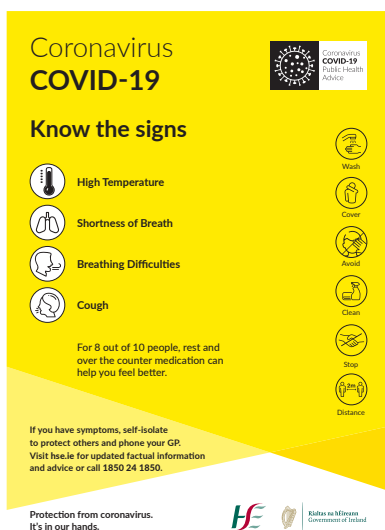


COVID-19 HSE

PRODUCT CODE: 25602

SIZES AVAILABLE: A4, A3, A2, A1, A0

MATERIAL TYPES: Corriboard, Foamex PVC, Dibond or Poster Paper



CORONAVIRUS KNOW THE SYMPTOMS HSE

PRODUCT CODE: 25623

SIZES AVAILABLE: A4, A3, A2, A1, A0

MATERIAL TYPES: Corriboard, Foamex PVC, Dibond or Poster Paper

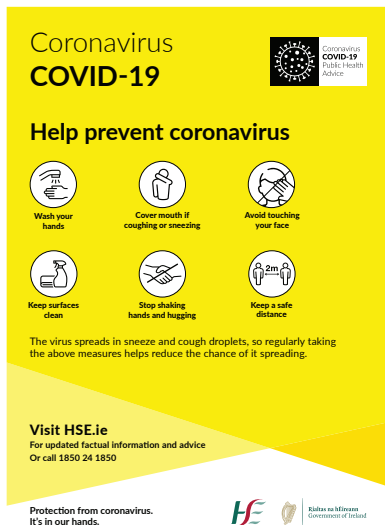


WHO IS MOST AT RISK CORONAVIRUS HSE

PRODUCT CODE: 25621

SIZES AVAILABLE: A4, A3, A2, A1, A0

MATERIAL TYPES: Corriboard, Foamex PVC, Dibond or Poster Paper



HELP PREVENT CORONAVIRUS SPREAD HSE

PRODUCT CODE: 25620

SIZES AVAILABLE: A4, A3, A2, A1, A0

MATERIAL TYPES: Corriboard, Foamex PVC, Dibond or Poster Paper



COVID-19 KIDS HSE

PRODUCT CODE: 25601

SIZES AVAILABLE: A4, A3, A2, A1, A0

MATERIAL TYPES: Corriboard, Foamex PVC, Dibond or Poster Paper



HAND HYGIENE HSE

PRODUCT CODE: 25606

SIZES AVAILABLE: A4, A3, A2, A1, A0

MATERIAL TYPES: Corriboard, Foamex PVC, Dibond or Poster Paper



Coronavirus COVID-19

If you have fever and/or cough you should stay at home regardless of your travel or contact history.

If you have returned from an area that is subject to travel restrictions due to COVID-19 you should restrict your movement for 14 days. Check the list of affected areas on www.dfa.ie

All People Are Advised To:

- **Reduce** social interactions
- **Keep a distance** of 2m between you and other people
- **Do not** shake hands or make close contact where possible

If you have symptoms visit hse.ie or phone HSE Live 1850 24 1850

Symptoms

- Fever (High Temperature)
- A Cough
- Shortness of Breath
- Breathing Difficulties

How to Prevent

- Stop** shaking hands or hugging when saying hello or greeting other people
- Distance** yourself at least 2 metres (6 feet) away from other people, especially those who might be unwell
- Wash** your hands well and often to avoid contamination
- Cover** your mouth and nose with a tissue or sleeve when coughing or sneezing and discard used tissue
- Avoid** touching eyes, nose, or mouth with unwashed hands
- Clean** and disinfect frequently touched objects and surfaces

For Daily Updates Visit
www.gov.ie/health-covid-19
www.hse.ie

Ireland is operating a delay strategy in line with WHO and ECDC advice

HE HSE Rianna na hÉireann Government of Ireland

CORONAVIRUS HSE STAY AT HOME

PRODUCT CODE: 25638

SIZES AVAILABLE: A4, A3, A2, A1, A0

MATERIAL TYPES: Corriboard, Foamex PVC, Dibond or Poster Paper

Coronavirus COVID-19

If you have fever and/or cough you should stay at home regardless of your travel or contact history.

If you feel unwell with cough or fever:

- please phone your doctor for medical advice or
- please phone the pharmacy for a supply of your medicines or advice about your medicines.

This helps to protect you, other people and staff visiting the pharmacy today.

Phone us first

Tel:

Wash your hands well and often to avoid contamination

Cover your mouth and nose with a tissue or sleeve when coughing or sneezing and bin used tissue

Avoid touching eyes, nose, or mouth with unwashed hands

Clean and disinfect frequently touched objects and surfaces

Stop shaking hands or hugging when saying hello or greeting other people

Distance yourself at least 2 metres (6 feet) away from other people, especially those who might be unwell

For more information visit hse.ie or phone HSElive on 1850 24 1850

HE HSE Rianna na hÉireann Government of Ireland

COVID-19 PHARMACY DOOR

PRODUCT CODE: 25639

SIZES AVAILABLE: A4, A3

MATERIAL TYPES: Corriboard, Poster Paper or Self Adhesive

Coronavirus COVID-19

If you feel unwell with cough, shortness of breath or fever; **please phone the doctor first for medical advice.**

This helps to protect other people visiting this surgery today.

Phone us first

Tel:

Wash your hands well and often to avoid contamination

Cover your mouth and nose with a tissue or sleeve when coughing or sneezing and bin used tissue

Avoid touching eyes, nose, or mouth with unwashed hands

Clean and disinfect frequently touched objects and surfaces

For more information visit hse.ie or phone HSElive on 1850 24 1850

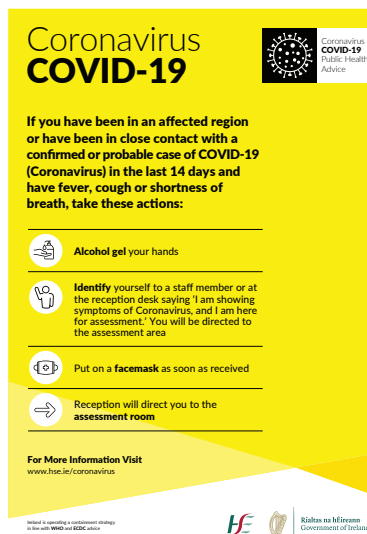
HE HSE Rianna na hÉireann Government of Ireland

GP CORONAVIRUS FRONT DOOR

PRODUCT CODE: 25640

SIZES AVAILABLE: A4, A3

MATERIAL TYPES: Corriboard, Poster Paper or Self Adhesive



HSE EMERGENCY DEPARTMENT CORONAVIRUS MEASURES

PRODUCT CODE: 25641

SIZES AVAILABLE: A4, A3, A2, A1, A0

MATERIAL TYPES: Corriboard, Foamex PVC, Dibond or Poster Paper



VISITORS PROTECT YOUR LOVED ONES HSE

PRODUCT CODE: 25642

SIZES AVAILABLE: A4, A3, A2, A1, A0

MATERIAL TYPES: Corriboard, Foamex PVC, Dibond or Poster Paper



COVER YOUR COUGH & SNEEZE THE RIGHT WAY HSE

PRODUCT CODE: 25600

SIZES AVAILABLE: A4, A3, A2, A1, A0

MATERIAL TYPES: Corriboard, Foamex PVC, Dibond or Poster Paper



COVID-19 PROTECT EACH OTHER PLAY APART HSE

PRODUCT CODE: 25626

SIZES AVAILABLE: 600 x 600mm, 800 x 800mm & 1200 x 1200mm

MATERIAL TYPES: Corriboard, Foamex PVC, Dibond or Poster Paper



COVID-19 PROTECT EACH OTHER SHOP APART HSE

PRODUCT CODE: 25628

SIZES AVAILABLE: 600 x 600mm, 800 x 800mm & 1200 x 1200mm

MATERIAL TYPES: Corriboard, Foamex PVC, Dibond or Poster Paper



COVID-19 PROTECT EACH OTHER SIT APART HSE

PRODUCT CODE: 25631

SIZES AVAILABLE: 600 x 600mm, 800 x 800mm & 1200 x 1200mm

MATERIAL TYPES: Corriboard, Foamex PVC, Dibond or Poster Paper

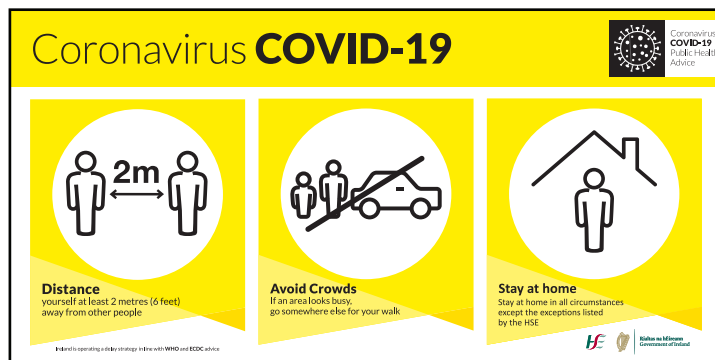


COVID-19 STAND APART HSE

PRODUCT CODE: 25659

SIZES AVAILABLE: 600 x 600mm, 800 x 800mm & 1200 x 1200mm

MATERIAL TYPES: Corriboard, Foamex PVC, Dibond or Poster Paper



SOCIAL DISTANCING PREVENTIVE MEASURES

PRODUCT CODE: 25687

SIZES AVAILABLE:

800 x 400mm, 1200 x 600mm,
1800 x 900mm, 2400 x 1200mm

MATERIAL TYPES:

Corriboard, Foamex, PVC, Dibond or
Poster Paper



PLEASE ENSURE SOCIAL DISTANCING

PRODUCT CODE: 25696

SIZES AVAILABLE:

A4, A3, A2, A1, A0

MATERIAL TYPES:

Corriboard, Foamex, Solid PVC, Sticker or Poster Paper



CORONAVIRUS SHOP APART

PRODUCT CODE: 25697

SIZES AVAILABLE:

A4, A3, A2, A1, A0

MATERIAL TYPES:

Corriboard, Foamex, Solid PVC, Sticker or Poster Paper



CORONAVIRUS SOCIAL DISTANCING OUTSIDE HSE

PRODUCT CODE: 25625

SIZES AVAILABLE: A4, A3, A2, A1, A0

MATERIAL TYPES: Corriboard, Foamex, Solid PVC, Sticker or Poster Paper



DISPOSE OF GLOVES RESPONSIBLY

PRODUCT CODE: 25713

SIZES AVAILABLE: A4, A3, A2, A1, A0

MATERIAL TYPES: Corriboard, Foamex, Solid PVC, Sticker or Poster Paper



COVID-19 CONTACTLESS PAYMENT

PRODUCT CODE: 25708

SIZES AVAILABLE: A4, A3, A2, A1, A0

MATERIAL TYPES: Corriboard, Foamex, Solid PVC, Sticker or Poster Paper

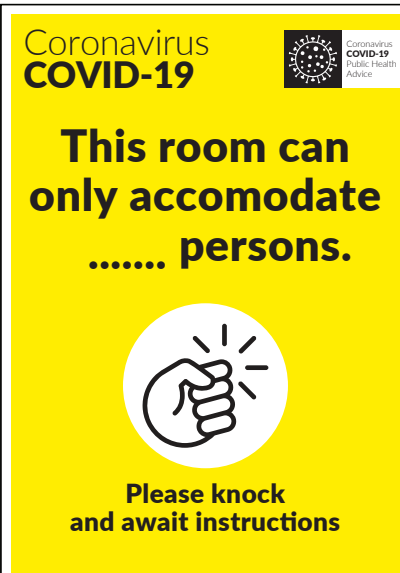


COVID-19 STORE PROTOCOLS

PRODUCT CODE: 25739

SIZES AVAILABLE: A4, A3, A2, A1, A0

MATERIAL TYPES: Corriboard, Foamex, Solid PVC, Sticker or Poster Paper



SOCIAL DISTANCING ROOM CAN ONLY ACCOMMODATE PERSONS

PRODUCT CODE: 25748

SIZES AVAILABLE: A4, A3, A2, A1, A0

MATERIAL TYPES: Corriboard, Foamex, Solid PVC, Sticker or Poster Paper



COVID-19 THERE SHOULD NOT BE MORE THAN PERSONS PER ELEVATOR

PRODUCT CODE: 25749

SIZES AVAILABLE: A4, A3, A2, A1, A0

MATERIAL TYPES: Corriboard, Foamex, Solid PVC, Sticker or Poster Paper



**COVID-19 PLEASE QUEUE HERE**

PRODUCT CODE: 25785

SIZES AVAILABLE: A4, A3, A2, A1, A0

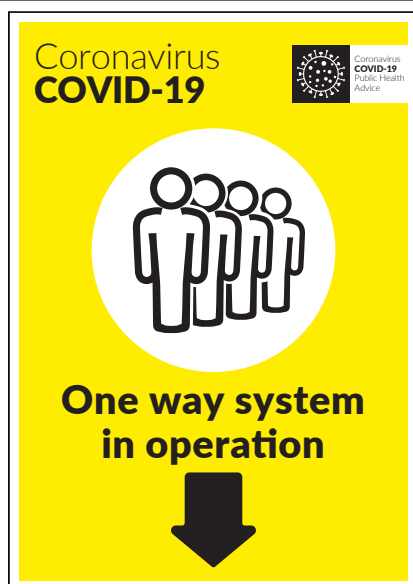
MATERIAL TYPES: Corriboard, Foamex, Solid PVC, Sticker or Poster Paper

**COVID-19 IN-STORE SAFETY INFORMATION**

PRODUCT CODE: 25786

SIZES AVAILABLE: A4, A3, A2, A1, A0

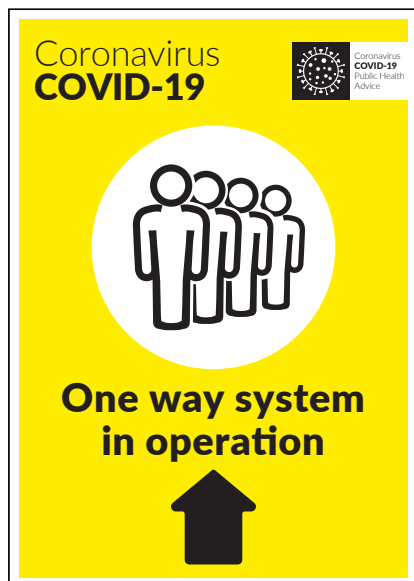
MATERIAL TYPES: Corriboard, Foamex, Solid PVC, Sticker or Poster Paper

**ONE WAY SYSTEM IN OPERATION ARROW DOWN**

PRODUCT CODE: 25787

SIZES AVAILABLE: A4, A3, A2, A1, A0

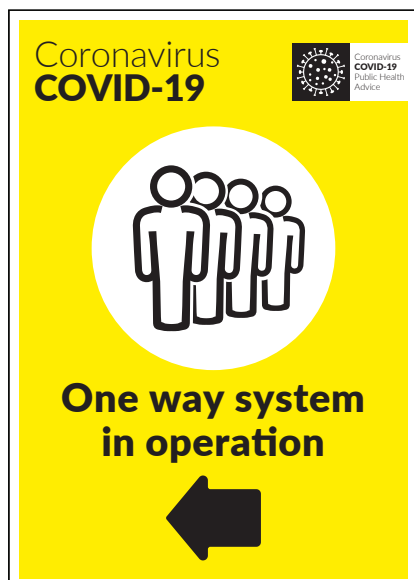
MATERIAL TYPES: Corriboard, Foamex, Solid PVC, Sticker or Poster Paper

**ONE WAY SYSTEM IN OPERATION ARROW UP**

PRODUCT CODE: 25788

SIZES AVAILABLE: A4, A3, A2, A1, A0

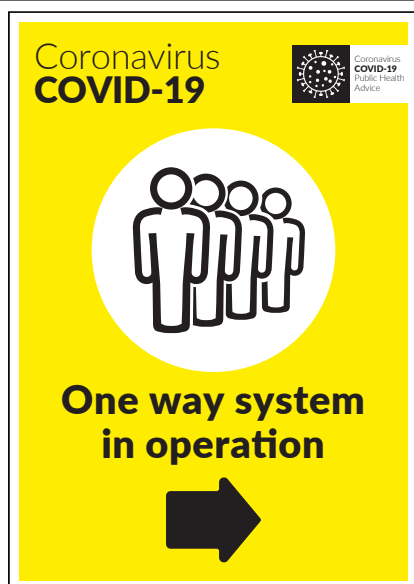
MATERIAL TYPES: Corriboard, Foamex, Solid PVC, Sticker or Poster Paper

**ONE WAY SYSTEM IN OPERATION ARROW LEFT**

PRODUCT CODE: 25789

SIZES AVAILABLE: A4, A3, A2, A1, A0

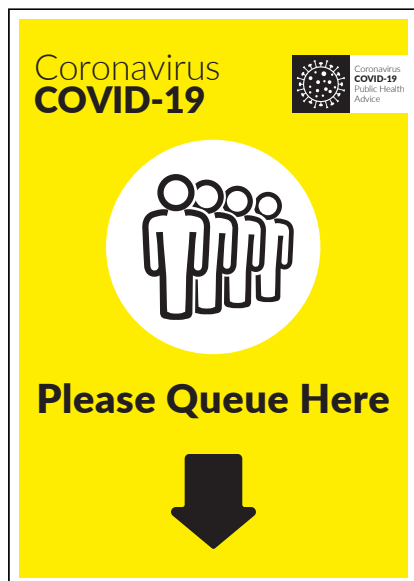
MATERIAL TYPES: Corriboard, Foamex, Solid PVC, Sticker or Poster Paper

**ONE WAY SYSTEM IN OPERATION ARROW RIGHT**

PRODUCT CODE: 25790

SIZES AVAILABLE: A4, A3, A2, A1, A0

MATERIAL TYPES: Corriboard, Foamex, Solid PVC, Sticker or Poster Paper

**COVID-19 PLEASE QUEUE HERE ARROW DOWN**

PRODUCT CODE: 25791

SIZES AVAILABLE: A4, A3, A2, A1, A0

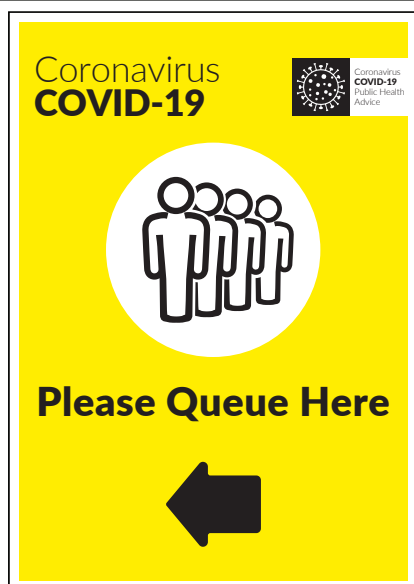
MATERIAL TYPES: Corriboard, Foamex, Solid PVC, Sticker or Poster Paper

**COVID-19 PLEASE QUEUE HERE ARROW UP**

PRODUCT CODE: 25792

SIZES AVAILABLE: A4, A3, A2, A1, A0

MATERIAL TYPES: Corriboard, Foamex, Solid PVC, Sticker or Poster Paper

**COVID-19 PLEASE QUEUE HERE ARROW LEFT**

PRODUCT CODE: 25793

SIZES AVAILABLE: A4, A3, A2, A1, A0

MATERIAL TYPES: Corriboard, Foamex, Solid PVC, Sticker or Poster Paper

**COVID-19 PLEASE QUEUE HERE ARROW RIGHT**

PRODUCT CODE: 25794

SIZES AVAILABLE: A4, A3, A2, A1, A0

MATERIAL TYPES: Corriboard, Foamex, Solid PVC, Sticker or Poster Paper

**COVID-19 PLEASE SIT HERE**

PRODUCT CODE: 25798

SIZES AVAILABLE: A4, A3, A2, A1, A0

MATERIAL TYPES: Corriboard, Foamex, Solid PVC, Sticker or Poster Paper

**COVID-19 PLEASE ENSURE THE SEAT ON EITHER SIDE IS VACANT**

PRODUCT CODE: 25796

SIZES AVAILABLE: A4, A3, A2, A1, A0

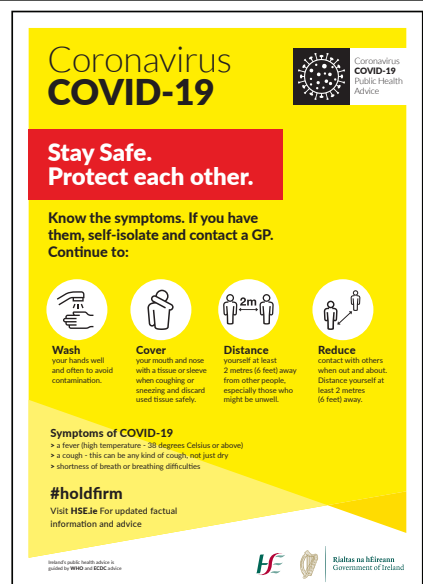
MATERIAL TYPES: Corriboard, Foamex, Solid PVC, Sticker or Poster Paper

**COVID-19 PLEASE LEAVE THIS SEAT FREE**

PRODUCT CODE: 25799

SIZES AVAILABLE: A4, A3, A2, A1, A0

MATERIAL TYPES: Corriboard, Foamex, Solid PVC, Sticker or Poster Paper

**COVID-19 STAY SAFE PROTECT EACH OTHER**

PRODUCT CODE: 25811

SIZES AVAILABLE: A4, A3, A2, A1, A0

MATERIAL TYPES: Corriboard, Foamex, Solid PVC, Sticker or Poster Paper

**COVID-19 PLEASE ORDER HERE**

PRODUCT CODE: 25812

SIZES AVAILABLE: A4, A3, A2, A1, A0

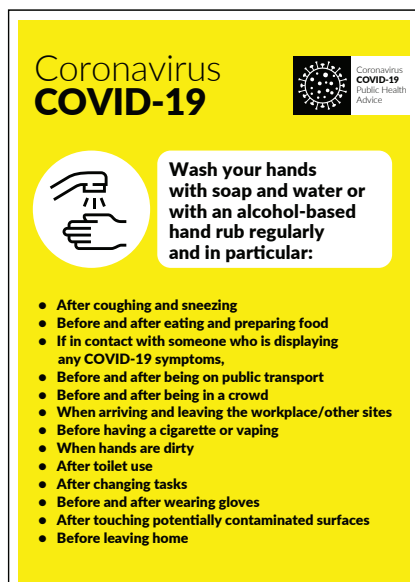
MATERIAL TYPES: Corriboard, Foamex, Solid PVC, Sticker or Poster Paper

**COVID-19 PLEASE PAY HERE**

PRODUCT CODE: 25813

SIZES AVAILABLE: A4, A3, A2, A1, A0

MATERIAL TYPES: Corriboard, Foamex, Solid PVC, Sticker or Poster Paper

**COVID-19 MULTI NOTICE HAND WASH**

PRODUCT CODE: 25814

SIZES AVAILABLE: A4, A3, A2, A1, A0

MATERIAL TYPES: Corriboard, Foamex, Solid PVC, Sticker or Poster Paper

**COVID-19 PROTECT EACH OTHER EXERCISE APART**

PRODUCT CODE: 25815

SIZES AVAILABLE: 600 x 600mm, 800 x 800mm & 1200 x 1200mm

MATERIAL TYPES: Corriboard, Foamex PVC, Dibond or Poster Paper



Coronavirus COVID-19



How to wash your hands with soap and water

1. Wet your hands with warm water and apply soap.
2. Rub your hands together until the soap forms a lather.
3. Rub the top of your hands, between your fingers and under your fingernails.
4. Do this for about 20 seconds.
5. Rinse your hands under running water.
6. Dry your hands with a clean towel or paper towel.

COVID-19 HOW TO WASH YOUR HANDS

PRODUCT CODE: 25816

SIZES AVAILABLE: A4, A3, A2, A1, A0

MATERIAL TYPES: Corriboard, Foamex, Solid PVC, Sticker or Poster Paper

Coronavirus COVID-19



**Do not share
office stationery**

COVID-19 DO NOT SHARE OFFICE STATIONERY

PRODUCT CODE: 25817

SIZES AVAILABLE: A4, A3, A2, A1, A0

MATERIAL TYPES: Corriboard, Foamex, Solid PVC, Sticker or Poster Paper

Coronavirus COVID-19



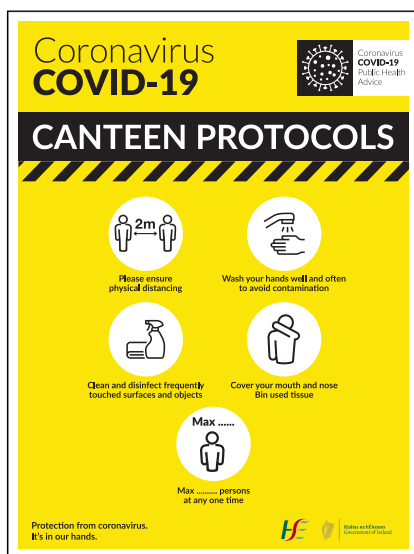
**REMEMBER
To keep 2m apart
in the seating area**

COVID-19 REMEMBER TO KEEP 2M APART IN THE SEATING AREA

PRODUCT CODE: 25818

SIZES AVAILABLE: A4, A3, A2, A1, A0

MATERIAL TYPES: Corriboard, Foamex, Solid PVC, Sticker or Poster Paper

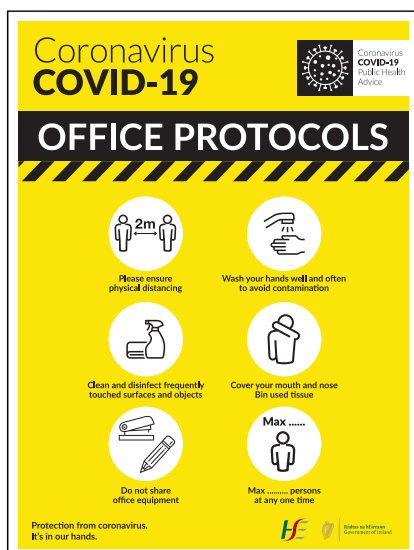


COVID-19 CANTEEN PROTOCOLS

PRODUCT CODE: 25831

SIZES AVAILABLE: A4, A3, A2, A1, A0

MATERIAL TYPES: Corriboard, Foamex, Solid PVC, Sticker or Poster Paper



COVID-19 OFFICE PROTOCOLS

PRODUCT CODE: 25832

SIZES AVAILABLE: A4, A3, A2, A1, A0

MATERIAL TYPES: Corriboard, Foamex, Solid PVC, Sticker or Poster Paper

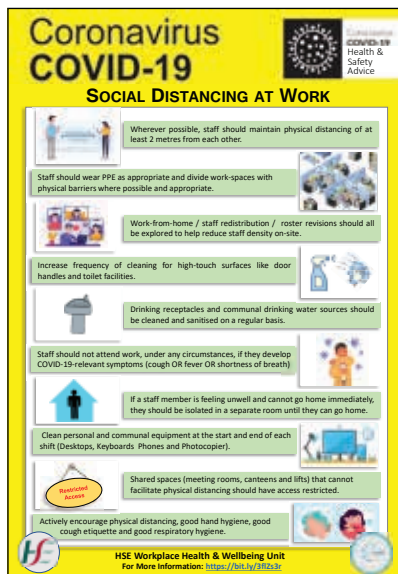


COVID-19 ISOLATION OFFICE

PRODUCT CODE: 25834

SIZES AVAILABLE: A4, A3, A2, A1, A0

MATERIAL TYPES: Corriboard, Foamex, Solid PVC, Sticker or Poster Paper



COVID-19 SOCIAL DISTANCING AT WORK

PRODUCT CODE: 25843

SIZES AVAILABLE: A4, A3, A2, A1, A0

MATERIAL TYPES: Corriboard, Foamex, Solid PVC, Sticker or Poster Paper

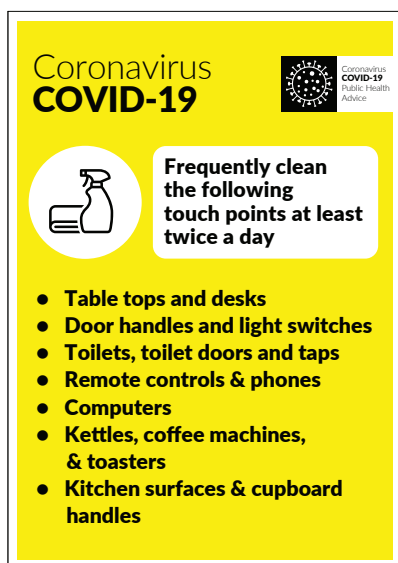


COVID-19 PLAYING AREA PROTOCOLS

PRODUCT CODE: 25864

SIZES AVAILABLE: A4, A3, A2, A1, A0

MATERIAL TYPES: Corriboard, Foamex, Solid PVC, Sticker or Poster Paper



COVID-19 FREQUENTLY CLEAN THE FOLLOWING TOUCH POINTS

PRODUCT CODE: 25857

SIZES AVAILABLE: A4, A3, A2, A1, A0

MATERIAL TYPES: Corriboard, Foamex, Solid PVC, Sticker or Poster Paper





COVID-19 CLEAN WASHROOMS AND SURFACES IN COMMUNAL AREAS AT LEAST TWICE A DAY OR WHEN VISIBLY DIRTY

PRODUCT CODE: 25858

SIZES AVAILABLE: A4, A3, A2, A1, A0

MATERIAL TYPES: Corriboard, Foamex, Solid PVC, Sticker or Poster Paper



COVID-19 CLEAN YOUR HANDS PUBLIC TRANSPORT AND WORKPLACE

PRODUCT CODE: 25859

SIZES AVAILABLE: A4, A3, A2, A1, A0

MATERIAL TYPES: Corriboard, Foamex, Solid PVC, Sticker or Poster Paper



COVID-19 PERSONAL ITEMS INTO WORK MUST BE CLEANED

PRODUCT CODE: 25860

SIZES AVAILABLE: A4, A3, A2, A1, A0

MATERIAL TYPES: Corriboard, Foamex, Solid PVC, Sticker or Poster Paper

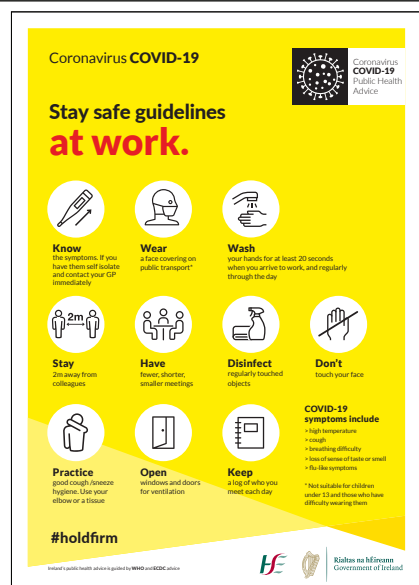


COVID-19 STAY SAFE GUIDELINES AT HOME

PRODUCT CODE: 25869

SIZES AVAILABLE: A4, A3, A2, A1, A0

MATERIAL TYPES: Corriboard, Foamex, Solid PVC, Sticker or Poster Paper



COVID-19 STAY SAFE GUIDELINES AT WORK

PRODUCT CODE: 25876

SIZES AVAILABLE: A4, A3, A2, A1, A0

MATERIAL TYPES: Corriboard, Foamex, Solid PVC, Sticker or Poster Paper



COVID-19 STAY SAFE GUIDELINES EXERCISING OUTDOORS

PRODUCT CODE: 25879

SIZES AVAILABLE: A4, A3, A2, A1, A0

MATERIAL TYPES: Corriboard, Foamex, Solid PVC, Sticker or Poster Paper



COVID-19 STAY SAFE GUIDELINES AT INDOOR GATHERINGS

PRODUCT CODE: 25870

SIZES AVAILABLE: A4, A3, A2, A1, A0

MATERIAL TYPES: Corriboard, Foamex, Solid PVC, Sticker or Poster Paper



COVID-19 STAY SAFE GUIDELINES AT OUTDOOR GATHERINGS

PRODUCT CODE: 25871

SIZES AVAILABLE: A4, A3, A2, A1, A0

MATERIAL TYPES: Corriboard, Foamex, Solid PVC, Sticker or Poster Paper



COVID-19 STAY SAFE GUIDELINES WHEN USING PUBLIC TRANSPORT

PRODUCT CODE: 25878

SIZES AVAILABLE: A4, A3, A2, A1, A0

MATERIAL TYPES: Corriboard, Foamex, Solid PVC, Sticker or Poster Paper





COVID-19 STAY LOCAL STAY SAFE

PRODUCT CODE: 25868

SIZES AVAILABLE: A4, A3, A2, A1, A0

MATERIAL TYPES: Corriboard, Foamex, Solid PVC, Sticker or Poster Paper



COVID-19 STAY SAFE GUIDELINES WHEN SHOPPING

PRODUCT CODE: 25877

SIZES AVAILABLE: A4, A3, A2, A1, A0

MATERIAL TYPES: Corriboard, Foamex, Solid PVC, Sticker or Poster Paper



COVID-19 SANITISATION IN PROGRESS

PRODUCT CODE: 25885

SIZES AVAILABLE: A4, A3, A2, A1, A0

MATERIAL TYPES: Corriboard, Foamex, Solid PVC, Sticker or Poster Paper



Coronavirus
COVID-19



Coronavirus
COVID-19
Public Health
Advice



**There should not
be more than
..... persons
in the gym**

COVID-19 THERE SHOULD NOT BE MORE THAN PERSONS IN THE GYM

PRODUCT CODE: 25886

SIZES AVAILABLE: A4, A3, A2, A1, A0

MATERIAL TYPES: Corriboard, Foamex, Solid PVC, Sticker or Poster Paper

Coronavirus
COVID-19



Coronavirus
COVID-19
Public Health
Advice



**There should not
be more than
..... persons
in the jacuzzi**

COVID-19 THERE SHOULD NOT BE MORE THAN PERSONS IN THE JACUZZI

PRODUCT CODE: 25888

SIZES AVAILABLE: A4, A3, A2, A1, A0

MATERIAL TYPES: Corriboard, Foamex, Solid PVC, Sticker or Poster Paper

Coronavirus
COVID-19



Coronavirus
COVID-19
Public Health
Advice



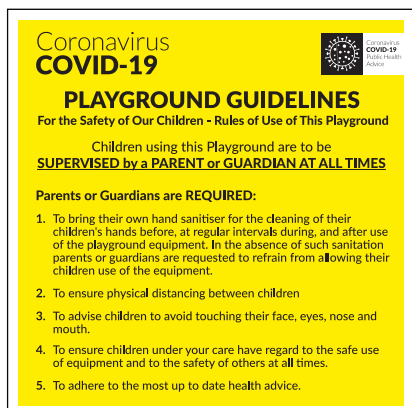
**There should not
be more than
..... persons
in the pool**

COVID-19 THERE SHOULD NOT BE MORE THAN PERSONS IN THE POOL

PRODUCT CODE: 25889

SIZES AVAILABLE: A4, A3, A2, A1, A0

MATERIAL TYPES: Corriboard, Foamex, Solid PVC, Sticker or Poster Paper



COVID-19 PLAYGROUND GUIDELINES

PRODUCT CODE: 25890

SIZES AVAILABLE: 600 x600 mm

MATERIAL TYPES: Corriboard, Foamex, Solid PVC, Sticker or Poster Paper

COVID-19 PPE Signage





COVID-19 SAFE USE OF MASKS

PRODUCT CODE: 25835

SIZES AVAILABLE: A4, A3, A2, A1, A0

MATERIAL TYPES: Corriboard, Foamex, Solid PVC, Sticker or Poster Paper

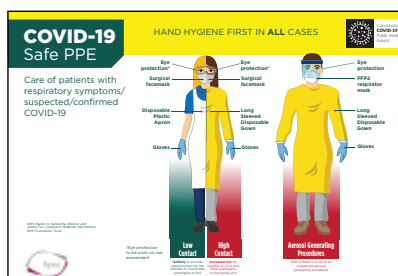


COVID-19 SAFE USE OF GLOVES

PRODUCT CODE: 25844

SIZES AVAILABLE: A4, A3, A2, A1, A0

MATERIAL TYPES: Corriboard, Foamex, Solid PVC, Sticker or Poster Paper



COVID-19 SAFE PPE

PRODUCT CODE: 25836

SIZES AVAILABLE: A4, A3, A2, A1, A0

MATERIAL TYPES: Corriboard, Foamex, Solid PVC, Sticker or Poster Paper



Coronavirus COVID-19
Putting on (donning) personal protective equipment (PPE)

Pre-donning instructions: This is undertaken outside the patient's room.

- Be well hydrated and have taken a toilet break.
- Have secured your hair back off your face.
- Have removed all jewellery including earrings.
- Do not bring mobile phones/bags into an isolation area.
- Be bare below the elbows.

PERFORM HAND HYGIENE BEFORE PUTTING ON PPE

- Put on the long-sleeved fluid repellent disposable gown.
- A. Respirator (FFP2) Mask for Aerosol Generating procedures only. Remember to Fit Check.
 B. Surgical Facemask for all other care.
- Eye protection - always required for ACP in all other situations risk assess the requirement.
- Gloves should cover the cuff of the gown.

Many Thanks to Public Health England for the use of their images. Produced by the HSE/AMRC team lead and team @HSE

HE IR Healthcare Ireland

COVID-19 PUTTING ON PPE

PRODUCT CODE: 25837

SIZES AVAILABLE: A4, A3, A2, A1, A0

MATERIAL TYPES: Corriboard, Foamex, Solid PVC, Sticker or Poster Paper

Coronavirus COVID-19
Taking off personal protective equipment (PPE)

PPE should be removed in an order that minimises the risk of self-contamination.

- Gloves, aprons and eye protection if used should be taken off in the patient's room or cohort area.
- Do not remove the mask until after you have left the patient room or cohort area.

- Remove gloves. Grasp the outside of glove with the opposite gloved hand; peel off. Hold the removed glove in the remaining gloved hand.
- Slide the fingers of the ungloved hand under the remaining glove at the wrist. Peel the remaining glove off over the first glove and discard.
- Perform hand hygiene.
- Remove eye protection if worn. Use both hands to handle the straps by pulling away from face and discard.
- Perform Hand Hygiene.
- Remove facemask once your clinical work is completed. Lean forward slightly, grasp the ties from the top of the head and gently pull off the facemask. Do not touch the front of the mask. If the mask has ear loops, lean forward and grasp the loops from each earlobe and take off and discard. DO NOT reuse once removed.
- Perform Hand Hygiene.

Many Thanks to Public Health England for the use of their images. Produced by the HSE/AMRC team lead and team @HSE

HE IR Healthcare Ireland

COVID-19 TAKING OFF PPE

PRODUCT CODE: 25838

SIZES AVAILABLE: A4, A3, A2, A1, A0

MATERIAL TYPES: Corriboard, Foamex, Solid PVC, Sticker or Poster Paper

Coronavirus COVID-19
Removal of (doffing) personal protective equipment (PPE)

PPE should be removed in an order that minimises the potential for cross contamination. The Surgical facemask/FFP2 respirator must always be removed outside the patient's room or cohort area.

THE ORDER OF REMOVAL OF PPE IS AS FOLLOWS:

- Gloves - the outside of the gloves are contaminated.
- Eye protection - the outside will be contaminated.
- Gown - the front of the gown and sleeves will be contaminated.
- Do not remove facemask or respirator until after you have left the patient room or cohort area. Lean forward slightly, grasp the ties from the top of the head and gently pull off the facemask/respirator. Do not touch the front of the mask. If the mask has ear loops, lean forward and grasp the loops from each earlobe and take off and discard. DO NOT reuse once removed.
- Perform Hand Hygiene.

Many Thanks to Public Health England for the use of their images. Produced by the HSE/AMRC team lead and team @HSE

HE IR Healthcare Ireland

COVID-19 DOFFING GOWNS

PRODUCT CODE: 25839

SIZES AVAILABLE: A4, A3, A2, A1, A0

MATERIAL TYPES: Corriboard, Foamex, Solid PVC, Sticker or Poster Paper



Coronavirus COVID-19
Doffing Coveralls in the context of COVID 19

DOFFING: If the isolation room has an ante room, the HCW can exit the isolation room and remove all PPE in the ante room. If the HCW is in patient room or cohort area which does not have an ante room, remove PPE prior to exit EXCEPT for the surgical face mask/respirator mask which should be removed after exit from the patient room or cohort area.

1. Remove gloves and dispose.
2. Perform hand hygiene. This covered thumb loop will still be in position, so proper hand hygiene will not be feasible.
3. Put on a new pair of gloves to complete the doffing process.
4. If wearing face shield remove now.
5. Grasp the outer edges of the hood and lift it up and off the head.
6. Remove the coverall. Untuck the coverall by lifting your head back, slide your fingers up to reach the top of the zipper, holding the zip fast, untuck completely without touching any skin or clothing.
 - A. Free your shoulders.
 - B. Remove your arms from the coverall by keeping them behind your back and pulling each arm out of the sleeves, remove the gloves from each hand at the same time.
 - C. Place hands inside coverall and roll the coverall from the waist down and step out of the coverall.
7. Roll the used coverall into a ball, taking care not to touch the outside of the coverall. Discard the coverall into the healthcare risk waste bin.
8. Perform hand hygiene.
9. Remove Goggles if wearing.
10. If in the patient room or cohort area, you will need to exit to the ante room to remove your mask. Perform hand hygiene.
11. Remove Respirator or Surgical Face mask. Lean forward slightly, grasp the top straps from the top of the head and gently pull off the face mask. Do not touch the front of the mask. If the mask has ear loops, lean forward and grasp the top straps from each side and take off and discard.
12. Perform hand hygiene.

Many thanks to Public Health England for the use of their images. Produced by the HSE/AMRC team and an HSE/AMRC team. HSE/AMRC team and an HSE/AMRC team. HSE/AMRC team and an HSE/AMRC team.

COVID-19 DOFFING COVERALLS

PRODUCT CODE: 25840

SIZES AVAILABLE: A4, A3, A2, A1, A0

MATERIAL TYPES: Corriboard, Foamex, Solid PVC, Sticker or Poster Paper

Coronavirus COVID-19
Donning Coveralls in the context of COVID 19

PERFORM IN A DESIGNATED AREA OUTSIDE THE PATIENT ROOM

BEFORE YOU BEGIN

- Check you have a chair to sit on if needed
- Check that items of PPE in your use are available and wear you, as well as a checked hand rub solution (AHSR).
- The sequence of donning PPE for a coverall suit is: hood is slightly different, depending on whether you are going to wear goggles or a visor, as follows the recommended sequence for coverall suit: either goggles or visor before

BEFORE YOU PUT ON PPE

- Be well hydrated and have taken a toilet break.
- Have removed all jewellery including earrings.
- Be sure before the entrance.
- Have secured your hair back off your face.
- Do not bring mobile phones/sleepers into an isolation area.

1. Perform hand hygiene.
2. Put on coverall, but do not put up the hood. Depending on the style of coverall, it may or may not have integrated fasteners. If not, each side may be secured with the coverall.
 - A. Put on Respirator (FFP2) Mask. Remember to fit Check.
 - B. Put on facemask - Use mask with ties, tie the upper straps on top of head and bring the lower straps up to front of the face and the top of head. Mask with loops - loop straps over the ears.
 - C. If using goggles or visor, push your thumbs through the fabric, approximately one inch up from the middle side of each coverall, remove or slide an artificial thumb loop.
3. Put on gloves and pull the gloves up to the cuff and lower down of the coverall.
4. Now put up the hood and close the zip.
5. If wearing a visor, push your thumbs through the fabric, approximately one inch up from the middle side of each coverall, remove or slide an artificial thumb loop.
6. Put on your surgical face mask. Use mask with ties, tie the upper straps on top of head and bring the lower straps up to front of the face and the top of head. Mask with loops - loop straps over the ears.
7. Put on your eye protection if there is a risk of splashing.
8. Put on non-sterile nitrile gloves.
9. You are now ready to enter the patient room.

Check PPE is secure and comfortable - extend arms, bend at waist, turn and walk up and down - use the mirror to self-check and if available, ask your buddy to confirm

Many thanks to Public Health England for the use of their images. Produced by the HSE/AMRC team and an HSE/AMRC team. HSE/AMRC team and an HSE/AMRC team. HSE/AMRC team and an HSE/AMRC team.

COVID-19 DONNING COVERALLS

PRODUCT CODE: 25841

SIZES AVAILABLE: A4, A3, A2, A1, A0

MATERIAL TYPES: Corriboard, Foamex, Solid PVC, Sticker or Poster Paper

Coronavirus COVID-19
Guide to donning and doffing standard Personal Protective Equipment (PPE)
FOR HEALTH AND SOCIAL CARE SETTINGS

DONNING OR PUTTING ON PPE

- Before putting on the PPE, perform hand hygiene.
- Be well hydrated and have taken a toilet break.
- Have removed all jewellery including earrings.
- Be sure before the entrance.
- Have secured your hair back off your face.
- Do not bring mobile phones/sleepers into an isolation area.

1. Put on your plastic apron, making sure it is fast securely at the back.
2. Put on your surgical face mask. Use mask with ties, tie the upper straps on top of head and bring the lower straps up to front of the face and the top of head. Mask with loops - loop straps over the ears.
3. Put on your eye protection if there is a risk of splashing.
4. Put on non-sterile nitrile gloves.
5. You are now ready to enter the patient room.

DOFFING OR TAKING OFF PPE

Surgical face masks may be used for single session use but gloves and apron must be changed between patients/residents.

1. Remove gloves, grasp the outside of the cuff of the gloves and peel off, holding the glove in the gloved hand, insert the finger underneath and peel off second glove.
2. Perform hand hygiene.
3. Remove eye protection.
4. Once outside the patient room or cohort area, remove surgical face mask.
5. Perform hand hygiene.
6. Grasp or untangle the neck ties and pull forward. Once both ties are held together in one hand, do not touch the outside as it is contaminated, and pull into healthcare risk waste.
7. Perform hand hygiene.
8. Perform hand hygiene.
9. Perform hand hygiene.

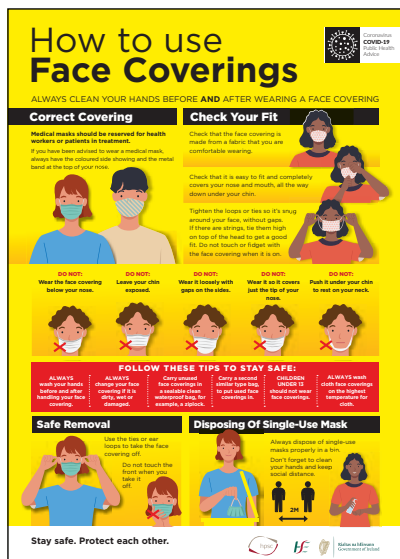
Many thanks to Public Health England for the use of their images. Produced by the HSE/AMRC team and an HSE/AMRC team. HSE/AMRC team and an HSE/AMRC team. HSE/AMRC team and an HSE/AMRC team.

COVID-19 DONNING AND DOFFING HEALTH SOCIAL CARE SETTINGS PLAN

PRODUCT CODE: 25842

SIZES AVAILABLE: A4, A3, A2, A1, A0

MATERIAL TYPES: Corriboard, Foamex, Solid PVC, Sticker or Poster Paper



COVID-19 HOW TO USE FACE COVERINGS

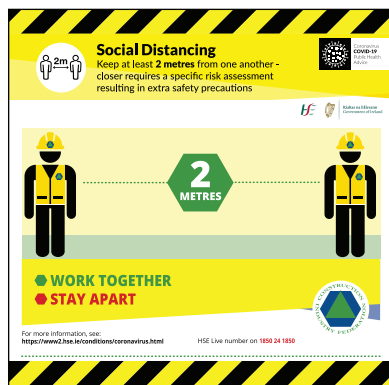
PRODUCT CODE: 25863

SIZES AVAILABLE: A4, A3, A2, A1, A0

MATERIAL TYPES: Corriboard, Foamex, Solid PVC, Sticker or Poster Paper

Clf Specific Signs



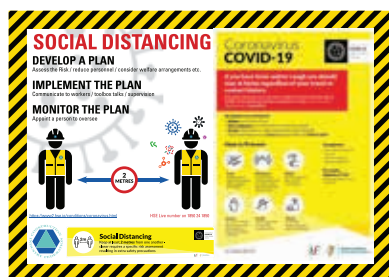


CONSTRUCTION INDUSTRY FEDERATION SOCIAL DISTANCING

PRODUCT CODE: 25652

SIZES AVAILABLE: 600 x 600mm, 800 x 800mm, 1200 x 1200mm

MATERIAL TYPES: Corriboard, Foamex PVC, Dibond or Poster Paper



CONSTRUCTION INDUSTRY FEDERATION FOLLOW THE PLAN

PRODUCT CODE: 25653

SIZES AVAILABLE: 600 x 400mm, 800 x 600mm, 1200 x 800mm, 1800 x 1200mm, 2400 x 1200mm

MATERIAL TYPES: Corriboard, Foamex PVC, Dibond or Poster Paper

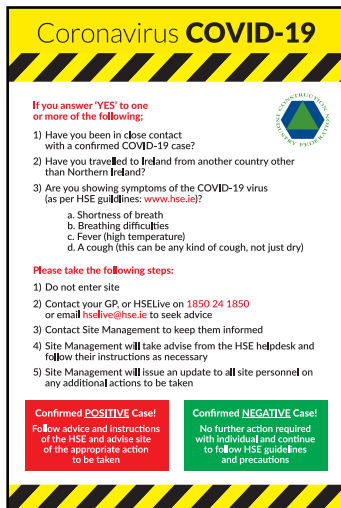


SOAP KILLS COVID-19

PRODUCT CODE: 25662

SIZES AVAILABLE: 400 x 600mm, 600 x 800mm, 800 x 1200mm

MATERIAL TYPES: Corriboard, Foamex PVC, Dibond or Poster Paper



CIF SITE AWARENESS

PRODUCT CODE: 25694

SIZES AVAILABLE: 400 x 600mm, 600 x 800mm, 800 x 1200mm

MATERIAL TYPES: Corriboard, Foamex, PVC, Dibond or Poster Paper



DRIVERS STAY IN YOUR VEHICLE

PRODUCT CODE: 25695

SIZES AVAILABLE: 400 x 600mm, 600 x 800mm, 800 x 1200mm

MATERIAL TYPES: Corriboard, Foamex, PVC, Dibond or Poster Paper



DO NOT SHARE CLEAN REGULARLY STICKER

PRODUCT CODE: 25690

SIZES AVAILABLE: 150 x 100mm, 300 x 200mm

MATERIAL TYPES: Adhesive Vinyl

PRINTING: Digitally printed full colour in high resolution, Finish: Matte or Gloss



DO NOT SWITCH DRIVERS STICKER

PRODUCT CODE: 25689

SIZES AVAILABLE: 150 x 100mm, 300 x 200mm

MATERIAL TYPES: Adhesive Vinyl

PRINTING: Digitally printed full colour in high resolution, Finish: Matte or Gloss

Construction Safety Signs



**CORONAVIRUS DO NOT TOUCH**

PRODUCT CODE: 25721

SIZES AVAILABLE:

Portrait: 300 x 400mm, 400 x 600mm, 600 x 800mm**Landscape:** 600 x 400mm, 800 x 600mm, 1200 x 800mm**Square:** 600 x 600mm, 800 x 800mm, 1200 x 1200mm

MATERIAL:

Corriboard

**CORONAVIRUS CONSTRUCTION PERSONNEL ONLY**

PRODUCT CODE: 25722

SIZES AVAILABLE:

Portrait: 300 x 400mm, 400 x 600mm, 600 x 800mm**Landscape:** 600 x 400mm, 800 x 600mm, 1200 x 800mm**Square:** 600 x 600mm, 800 x 800mm, 1200 x 1200mm

MATERIAL:

Corriboard

**CORONAVIRUS UNAUTHORISED ENTRY PROHIBITED**

PRODUCT CODE: 25724

SIZES AVAILABLE:

Portrait: 300 x 400mm, 400 x 600mm, 600 x 800mm**Landscape:** 600 x 400mm, 800 x 600mm, 1200 x 800mm**Square:** 600 x 600mm, 800 x 800mm, 1200 x 1200mm

MATERIAL:

Corriboard

**CORONAVIRUS NO ENTRY**

PRODUCT CODE: 25725

SIZES AVAILABLE:

Portrait: 300 x 400mm, 400 x 600mm, 600 x 800mm**Landscape:** 600 x 400mm, 800 x 600mm, 1200 x 800mm**Square:** 600 x 600mm, 800 x 800mm, 1200 x 1200mm

MATERIAL:

Corriboard

**CORONAVIRUS HAND SANITISER STATION**

PRODUCT CODE: 25728

SIZES AVAILABLE:

Portrait: 300 x 400mm, 400 x 600mm, 600 x 800mm

MATERIAL:

Corriboard

**COVID-19 WASH YOUR HANDS WELL**

PRODUCT CODE: 25729

SIZES AVAILABLE:

Portrait: 300 x 400mm, 400 x 600mm, 600 x 800mm**Landscape:** 600 x 400mm, 800 x 600mm, 1200 x 800mm**Square:** 600 x 600mm, 800 x 800mm, 1200 x 1200mm

MATERIAL:

Corriboard



COVID-19 CLEAN AND DISINFECT FREQUENTLY

PRODUCT CODE: 25730

SIZES AVAILABLE:

Portrait: 300 x 400mm, 400 x 600mm, 600 x 800mm

Landscape: 600 x 400mm, 800 x 600mm, 1200 x 800mm

Square: 600 x 600mm, 800 x 800mm, 1200 x 1200mm

MATERIAL:

Corriboard



COVID-19 UNWASHED HANDS

PRODUCT CODE: 25731

SIZES AVAILABLE:

Portrait: 300 x 400mm, 400 x 600mm, 600 x 800mm

Landscape: 600 x 400mm, 800 x 600mm, 1200 x 800mm

Square: 600 x 600mm, 800 x 800mm, 1200 x 1200mm

MATERIAL:

Corriboard



COVID-19 OBSERVE SAFETY PRECAUTIONS

PRODUCT CODE: 25732

SIZES AVAILABLE:

Portrait: 300 x 400mm, 400 x 600mm, 600 x 800mm

Landscape: 600 x 400mm, 800 x 600mm, 1200 x 800mm

Square: 600 x 600mm, 800 x 800mm, 1200 x 1200mm

MATERIAL:

Corriboard



CORONAVIRUS COVER YOUR MOUTH

PRODUCT CODE: 25733

SIZES AVAILABLE:

Portrait: 300 x 400mm, 400 x 600mm, 600 x 800mm

Landscape: 600 x 400mm, 800 x 600mm, 1200 x 800mm

Square: 600 x 600mm, 800 x 800mm, 1200 x 1200mm

MATERIAL:

Corriboard



COVID-19 WEAR PROTECTIVE GLOVES

PRODUCT CODE: 25734

SIZES AVAILABLE:

Portrait: 300 x 400mm, 400 x 600mm, 600 x 800mm

Landscape: 600 x 400mm, 800 x 600mm, 1200 x 800mm

Square: 600 x 600mm, 800 x 800mm, 1200 x 1200mm

MATERIAL:

Corriboard



COVID-19 WEAR PROTECTIVE CLOTHING

PRODUCT CODE: 25735

SIZES AVAILABLE:

Portrait: 300 x 400mm, 400 x 600mm, 600 x 800mm

Landscape: 600 x 400mm, 800 x 600mm, 1200 x 800mm

Square: 600 x 600mm, 800 x 800mm, 1200 x 1200mm

MATERIAL:

Corriboard

**COVID-19 WEAR FACE MASK**

PRODUCT CODE: 25737

SIZES AVAILABLE:

Portrait: 300 x 400mm, 400 x 600mm, 600 x 800mm**Landscape:** 600 x 400mm, 800 x 600mm, 1200 x 800mm**Square:** 600 x 600mm, 800 x 800mm, 1200 x 1200mm

MATERIAL:

Corriboard

**COVID-19 NO ACCESS**

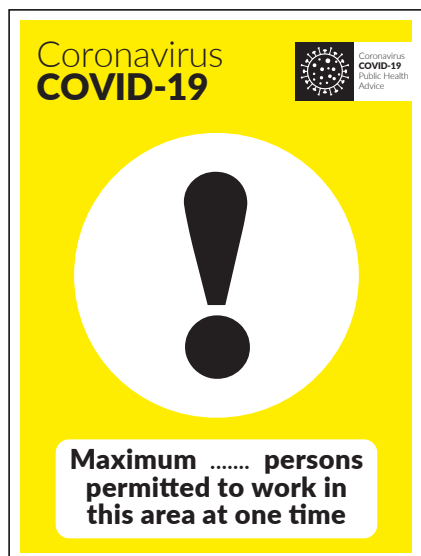
PRODUCT CODE: 25736

SIZES AVAILABLE:

Portrait: 300 x 400mm, 400 x 600mm, 600 x 800mm**Landscape:** 600 x 400mm, 800 x 600mm, 1200 x 800mm**Square:** 600 x 600mm, 800 x 800mm, 1200 x 1200mm

MATERIAL:

Corriboard

**COVID-19 MAX PERSONS PERMITTED WORK**

PRODUCT CODE: 25738

SIZES AVAILABLE:

Portrait: 300 x 400mm, 400 x 600mm, 600 x 800mm**Landscape:** 600 x 400mm, 800 x 600mm, 1200 x 800mm**Square:** 600 x 600mm, 800 x 800mm, 1200 x 1200mm

MATERIAL:

Corriboard





COVID-19 PERSONS PERMITTED IN THE CANTEEN

PRODUCT CODE: 25740

SIZES AVAILABLE: **Portrait:** 300 x 400mm, 400 x 600mm, 600 x 800mm
Landscape: 600 x 400mm, 800 x 600mm, 1200 x 800mm
Square: 600 x 600mm, 800 x 800mm, 1200 x 1200mm

MATERIAL: Corriboard



CORONAVIRUS PROTECT EACH OTHER WORK APART

PRODUCT CODE: 25727

SIZES AVAILABLE: **Square:** 600 x 600mm, 800 x 800mm, 1200 x 1200mm

MATERIAL: Corriboard



COVID-19 WASH HANDS CANTEEN FACILITIES

PRODUCT CODE: 25742

SIZES AVAILABLE: **Portrait:** 300 x 400mm, 400 x 600mm, 600 x 800mm
Landscape: 600 x 400mm, 800 x 600mm, 1200 x 800mm
Square: 600 x 600mm, 800 x 800mm, 1200 x 1200mm

MATERIAL: Corriboard



COVID-19 WASH HANDS AFTER WORKING IN THIS AREA

PRODUCT CODE: 25743

SIZES AVAILABLE: **Portrait:** 300 x 400mm, 400 x 600mm, 600 x 800mm
Landscape: 600 x 400mm, 800 x 600mm, 1200 x 800mm
Square: 600 x 600mm, 800 x 800mm, 1200 x 1200mm

MATERIAL: Corriboard



COVID-19 WASH YOUR HANDS BEFORE COMMENCING WORK

PRODUCT CODE: 25744

SIZES AVAILABLE: **Portrait:** 300 x 400mm, 400 x 600mm, 600 x 800mm
Landscape: 600 x 400mm, 800 x 600mm, 1200 x 800mm
Square: 600 x 600mm, 800 x 800mm, 1200 x 1200mm

MATERIAL: Corriboard



COVID-19 ALL SITE PERSONNEL MUST HAVE C19 DIGITAL CARD

PRODUCT CODE: 25745

SIZES AVAILABLE: **Portrait:** 300 x 400mm, 400 x 600mm, 600 x 800mm
Landscape: 600 x 400mm, 800 x 600mm, 1200 x 800mm
Square: 600 x 600mm, 800 x 800mm, 1200 x 1200mm

MATERIAL: Corriboard



SHOW SECURITY PERSONNEL YOUR C19 DIGITAL CARD ON ARRIVAL

PRODUCT CODE: 25746

SIZES AVAILABLE: **Portrait:** 300 x 400mm, 400 x 600mm, 600 x 800mm
Landscape: 600 x 400mm, 800 x 600mm, 1200 x 800mm
Square: 600 x 600mm, 800 x 800mm, 1200 x 1200mm

MATERIAL: Corriboard



COVID-19 HAVE YOU WASHED YOUR HANDS WITH HOT WATER

PRODUCT CODE: 25747

SIZES AVAILABLE: **Portrait:** 300 x 400mm, 400 x 600mm, 600 x 800mm
Landscape: 600 x 400mm, 800 x 600mm, 1200 x 800mm
Square: 600 x 600mm, 800 x 800mm, 1200 x 1200mm

MATERIAL: Corriboard

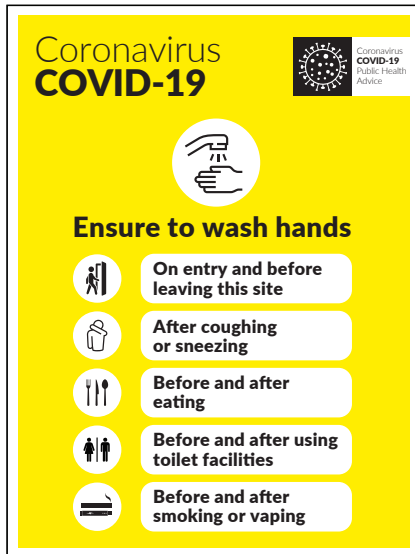


CORONAVIRUS COMPLIANCE OFFICER

PRODUCT CODE: 25753

SIZES AVAILABLE: **Portrait:** 300 x 400mm, 400 x 600mm, 600 x 800mm
Landscape: 600 x 400mm, 800 x 600mm, 1200 x 800mm
Square: 600 x 600mm, 800 x 800mm, 1200 x 1200mm

MATERIAL: Corriboard



WASH YOUR HANDS MULTI NOTICE

PRODUCT CODE: 25754

SIZES AVAILABLE: **Portrait:** 300 x 400mm, 400 x 600mm, 600 x 800mm
Landscape: 600 x 400mm, 800 x 600mm, 1200 x 800mm
Square: 600 x 600mm, 800 x 800mm, 1200 x 1200mm

MATERIAL: Corriboard



ENSURE TO CARRY HAND SANITISER AT ALL TIMES

PRODUCT CODE: 25755

SIZES AVAILABLE: **Portrait:** 300 x 400mm, 400 x 600mm, 600 x 800mm
Landscape: 600 x 400mm, 800 x 600mm, 1200 x 800mm
Square: 600 x 600mm, 800 x 800mm, 1200 x 1200mm

MATERIAL: Corriboard



HAND SANITISER MUST BE CARRIED AT ALL TIMES AND USED WHEN WORKING IN THIS AREA

PRODUCT CODE: 25756

SIZES AVAILABLE: **Portrait:** 300 x 400mm, 400 x 600mm, 600 x 800mm
Landscape: 600 x 400mm, 800 x 600mm, 1200 x 800mm
Square: 600 x 600mm, 800 x 800mm, 1200 x 1200mm

MATERIAL: Corriboard



SANITISE ALL TOUCH POINTS AFTER TASK IS COMPLETED

PRODUCT CODE: 25757

SIZES AVAILABLE: **Portrait:** 300 x 400mm, 400 x 600mm, 600 x 800mm
Landscape: 600 x 400mm, 800 x 600mm, 1200 x 800mm
Square: 600 x 600mm, 800 x 800mm, 1200 x 1200mm

MATERIAL: Corriboard

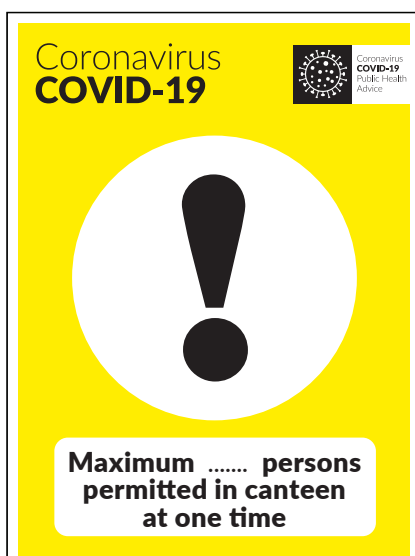


COVID-19 HAND WASH STATION

PRODUCT CODE: 25758

SIZES AVAILABLE: **Portrait:** 300 x 400mm, 400 x 600mm, 600 x 800mm
Landscape: 600 x 400mm, 800 x 600mm, 1200 x 800mm
Square: 600 x 600mm, 800 x 800mm, 1200 x 1200mm

MATERIAL: Corriboard

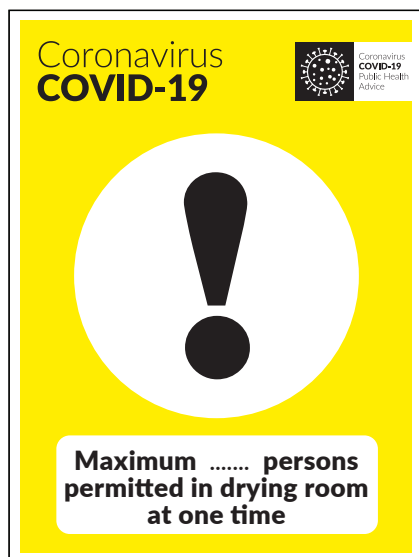


MAXIMUM PERSONS PERMITTED IN CANTEEN AT ONE TIME

PRODUCT CODE: 25759

SIZES AVAILABLE: **Portrait:** 300 x 400mm, 400 x 600mm, 600 x 800mm
Landscape: 600 x 400mm, 800 x 600mm, 1200 x 800mm
Square: 600 x 600mm, 800 x 800mm, 1200 x 1200mm

MATERIAL: Corriboard



MAXIMUM PERSONS PERMITTED IN DRYING ROOM AT ONE TIME

PRODUCT CODE: 25760

SIZES AVAILABLE: **Portrait:** 300 x 400mm, 400 x 600mm, 600 x 800mm
Landscape: 600 x 400mm, 800 x 600mm, 1200 x 800mm
Square: 600 x 600mm, 800 x 800mm, 1200 x 1200mm

MATERIAL: Corriboard

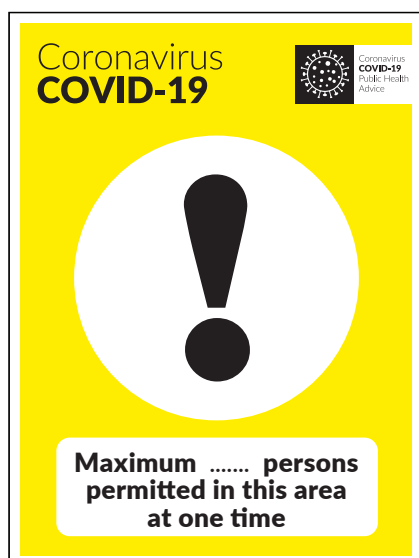


MAXIMUM PERSONS PERMITTED IN THIS ROOM AT ONE TIME

PRODUCT CODE: 25761

SIZES AVAILABLE: **Portrait:** 300 x 400mm, 400 x 600mm, 600 x 800mm
Landscape: 600 x 400mm, 800 x 600mm, 1200 x 800mm
Square: 600 x 600mm, 800 x 800mm, 1200 x 1200mm

MATERIAL: Corriboard

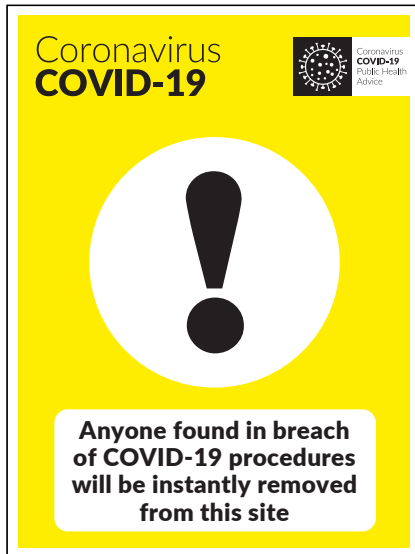


MAXIMUM PERSONS PERMITTED IN THIS AREA AT ONE TIME

PRODUCT CODE: 25762

SIZES AVAILABLE: **Portrait:** 300 x 400mm, 400 x 600mm, 600 x 800mm
Landscape: 600 x 400mm, 800 x 600mm, 1200 x 800mm
Square: 600 x 600mm, 800 x 800mm, 1200 x 1200mm

MATERIAL: Corriboard



ANYONE FOUND IN BREACH OF COVID-19 PROCEDURES WILL BE INSTANTLY REMOVED FROM THIS SITE

PRODUCT CODE: 25763

SIZES AVAILABLE: Portrait: 300 x 400mm, 400 x 600mm, 600 x 800mm
Landscape: 600 x 400mm, 800 x 600mm, 1200 x 800mm
Square: 600 x 600mm, 800 x 800mm, 1200 x 1200mm

MATERIAL: Corriboard



GLOVES MASKS AND FACE SHIELDS MUST BE WORN IN THIS AREA

PRODUCT CODE: 25764

SIZES AVAILABLE: Portrait: 300 x 400mm, 400 x 600mm, 600 x 800mm
Landscape: 600 x 400mm, 800 x 600mm, 1200 x 800mm
Square: 600 x 600mm, 800 x 800mm, 1200 x 1200mm

MATERIAL: Corriboard



COVID-19 DO NOT ENTER THIS SITE IF FEELING UNWELL

PRODUCT CODE: 25765

SIZES AVAILABLE: Portrait: 300 x 400mm, 400 x 600mm, 600 x 800mm
Landscape: 600 x 400mm, 800 x 600mm, 1200 x 800mm
Square: 600 x 600mm, 800 x 800mm, 1200 x 1200mm

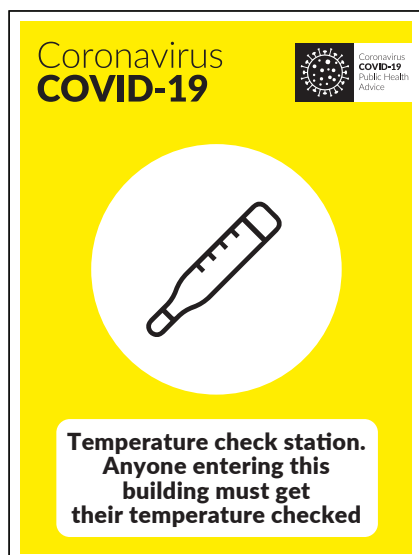
MATERIAL: Corriboard

**COVID-19 EXCLUSION ZONE**

PRODUCT CODE: 25766

SIZES AVAILABLE: Portrait: 300 x 400mm, 400 x 600mm, 600 x 800mm
Landscape: 600 x 400mm, 800 x 600mm, 1200 x 800mm
Square: 600 x 600mm, 800 x 800mm, 1200 x 1200mm

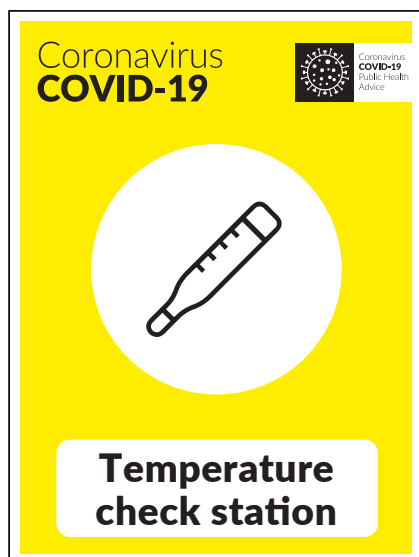
MATERIAL: Corriboard

**COVID-19 TEMPERATURE CHECK STATION**

PRODUCT CODE: 25767

SIZES AVAILABLE: Portrait: 300 x 400mm, 400 x 600mm, 600 x 800mm
Landscape: 600 x 400mm, 800 x 600mm, 1200 x 800mm
Square: 600 x 600mm, 800 x 800mm, 1200 x 1200mm

MATERIAL: Corriboard

**CORONAVIRUS TEMPERATURE CHECK ENTERING BUILDING**

PRODUCT CODE: 25768

SIZES AVAILABLE: Portrait: 300 x 400mm, 400 x 600mm, 600 x 800mm
Landscape: 600 x 400mm, 800 x 600mm, 1200 x 800mm
Square: 600 x 600mm, 800 x 800mm, 1200 x 1200mm

MATERIAL: Corriboard

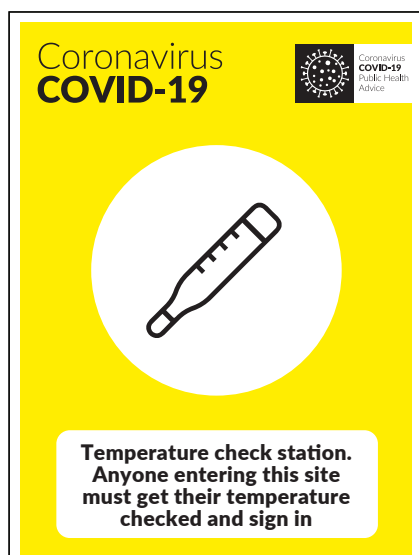


COVID-19 STOP HAVE YOU HAD YOUR TEMPERATURE CHECKED

PRODUCT CODE: 25769

SIZES AVAILABLE: Portrait: 300 x 400mm, 400 x 600mm, 600 x 800mm
Landscape: 600 x 400mm, 800 x 600mm, 1200 x 800mm
Square: 600 x 600mm, 800 x 800mm, 1200 x 1200mm

MATERIAL: Corriboard



CORONAVIRUS TEMPERATURE CHECK ENTERING SITE

PRODUCT CODE: 25770

SIZES AVAILABLE: Portrait: 300 x 400mm, 400 x 600mm, 600 x 800mm
Landscape: 600 x 400mm, 800 x 600mm, 1200 x 800mm
Square: 600 x 600mm, 800 x 800mm, 1200 x 1200mm

MATERIAL: Corriboard



COVID-19 DELIVERY DRIVER REPORT TO SECURITY ON ARRIVAL

PRODUCT CODE: 25771

SIZES AVAILABLE: Portrait: 300 x 400mm, 400 x 600mm, 600 x 800mm
Landscape: 600 x 400mm, 800 x 600mm, 1200 x 800mm
Square: 600 x 600mm, 800 x 800mm, 1200 x 1200mm

MATERIAL: Corriboard



CORONAVIRUS DELIVERY DRIVER DO NOT LEAVE VEHICLE

PRODUCT CODE: 25772

SIZES AVAILABLE: Portrait: 300 x 400mm, 400 x 600mm, 600 x 800mm
Landscape: 600 x 400mm, 800 x 600mm, 1200 x 800mm
Square: 600 x 600mm, 800 x 800mm, 1200 x 1200mm

MATERIAL: Corriboard



COVID-19 DISPOSE OF FACE MASKS HERE

PRODUCT CODE: 25773

SIZES AVAILABLE: Portrait: 300 x 400mm, 400 x 600mm, 600 x 800mm
Landscape: 600 x 400mm, 800 x 600mm, 1200 x 800mm
Square: 600 x 600mm, 800 x 800mm, 1200 x 1200mm

MATERIAL: Corriboard

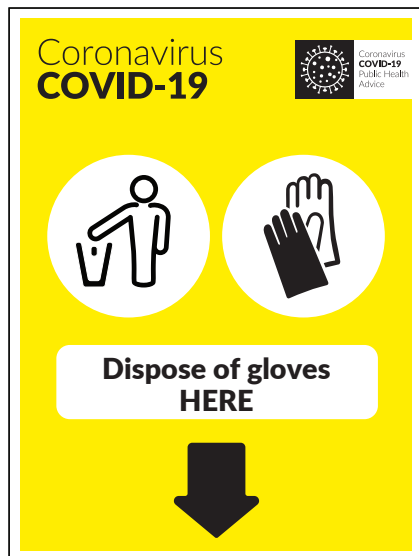


COVID-19 DISPOSE OF FACE SHIELDS HERE

PRODUCT CODE: 25774

SIZES AVAILABLE: Portrait: 300 x 400mm, 400 x 600mm, 600 x 800mm
Landscape: 600 x 400mm, 800 x 600mm, 1200 x 800mm
Square: 600 x 600mm, 800 x 800mm, 1200 x 1200mm

MATERIAL: Corriboard

**COVID-19 DISPOSE OF GLOVES HERE**

PRODUCT CODE: 25775

SIZES AVAILABLE: Portrait: 300 x 400mm, 400 x 600mm, 600 x 800mm
Landscape: 600 x 400mm, 800 x 600mm, 1200 x 800mm
Square: 600 x 600mm, 800 x 800mm, 1200 x 1200mm

MATERIAL: Corriboard

**COVID-19 FACE MASK STATION**

PRODUCT CODE: 25776

SIZES AVAILABLE: Portrait: 300 x 400mm, 400 x 600mm, 600 x 800mm
Landscape: 600 x 400mm, 800 x 600mm, 1200 x 800mm
Square: 600 x 600mm, 800 x 800mm, 1200 x 1200mm

MATERIAL: Corriboard

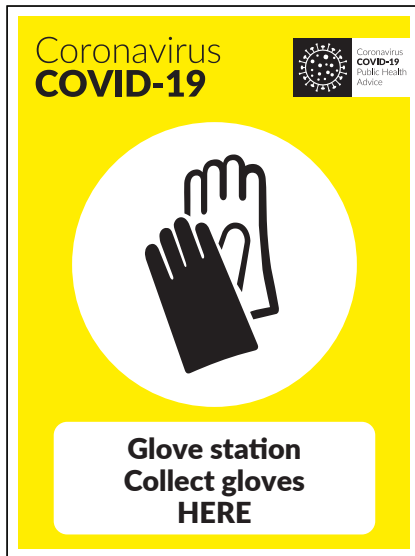
**COVID-19 FACE SHIELD STATION**

PRODUCT CODE: 25777

SIZES AVAILABLE: Portrait: 300 x 400mm, 400 x 600mm, 600 x 800mm
Landscape: 600 x 400mm, 800 x 600mm, 1200 x 800mm
Square: 600 x 600mm, 800 x 800mm, 1200 x 1200mm

MATERIAL: Corriboard

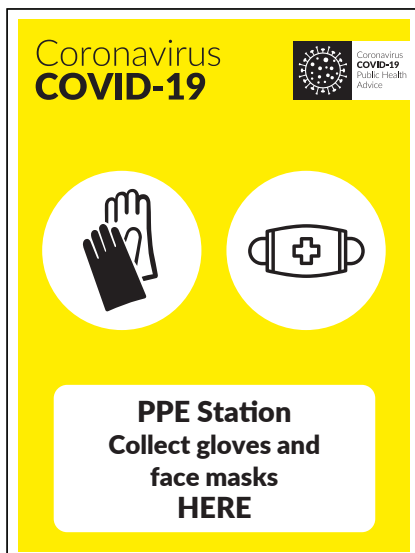


**COVID-19 GLOVE STATION**

PRODUCT CODE: 25778

SIZES AVAILABLE: Portrait: 300 x 400mm, 400 x 600mm, 600 x 800mm
 Landscape: 600 x 400mm, 800 x 600mm, 1200 x 800mm
 Square: 600 x 600mm, 800 x 800mm, 1200 x 1200mm

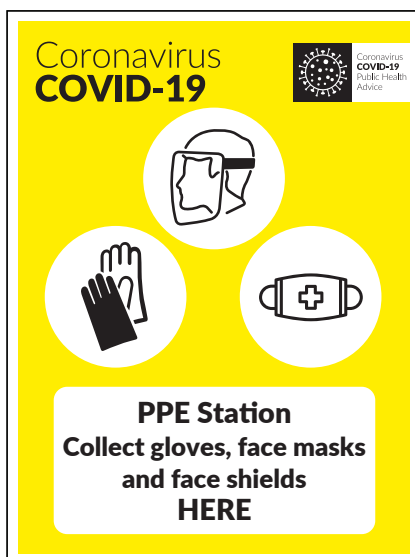
MATERIAL: Corriboard

**PPE STATION COLLECT GLOVES AND FACE MASKS**

PRODUCT CODE: 25779

SIZES AVAILABLE: Portrait: 300 x 400mm, 400 x 600mm, 600 x 800mm
 Landscape: 600 x 400mm, 800 x 600mm, 1200 x 800mm
 Square: 600 x 600mm, 800 x 800mm, 1200 x 1200mm

MATERIAL: Corriboard

**PPE STATION COLLECT GLOVES FACE MASKS AND FACE SHIELDS**

PRODUCT CODE: 25780

SIZES AVAILABLE: Portrait: 300 x 400mm, 400 x 600mm, 600 x 800mm
 Landscape: 600 x 400mm, 800 x 600mm, 1200 x 800mm
 Square: 600 x 600mm, 800 x 800mm, 1200 x 1200mm

MATERIAL: Corriboard

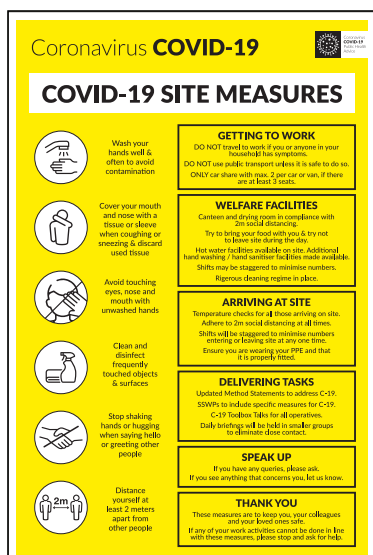


COVID-19 USE PEDESTRIAN WALKWAY ONE WAY SYSTEM

PRODUCT CODE: 25795

SIZES AVAILABLE: Portrait: 300 x 400mm, 400 x 600mm, 600 x 800mm
Landscape: 600 x 400mm, 800 x 600mm, 1200 x 800mm
Square: 600 x 600mm, 800 x 800mm, 1200 x 1200mm

MATERIAL: Corriboard

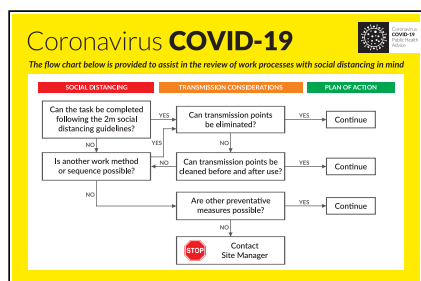


COVID-19 SITE MEASURES

PRODUCT CODE: 25781

SIZES AVAILABLE: Portrait: 300 x 400mm, 400 x 600mm, 600 x 800mm
Landscape: 600 x 400mm, 800 x 600mm, 1200 x 800mm
Square: 600 x 600mm, 800 x 800mm, 1200 x 1200mm

MATERIAL: Corriboard

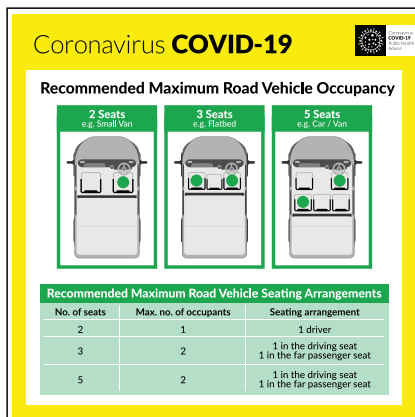


COVID-19 FLOW CHART

PRODUCT CODE: 25783

SIZES AVAILABLE: Landscape: 600 x 400mm, 800 x 600mm, 1200 x 800mm

MATERIAL: Corriboard



CORONAVIRUS RECOMMENDED MAX ROAD VEHICLE OCCUPANCY

PRODUCT CODE: 25784

SIZES AVAILABLE: Square: 600 x 600mm, 800 x 800mm, 1200 x 1200mm

MATERIAL: Corriboard

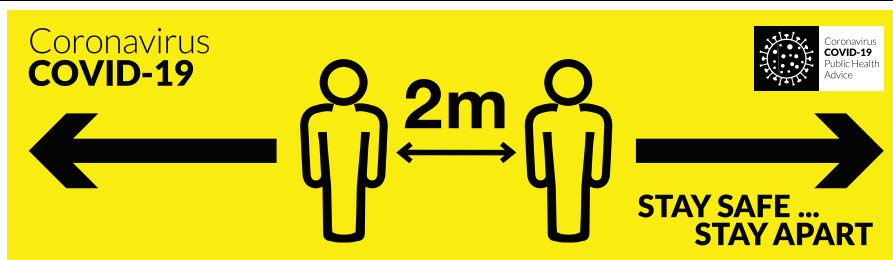


CORONAVIRUS ISOLATION OFFICE

PRODUCT CODE: 25834

SIZES AVAILABLE: A4, A3, A2, A1, A0

MATERIAL: Corriboard, Foamex, Solid PVC, Sticker or Poster Paper



CORONAVIRUS STAY SAFE STAY APART

PRODUCT CODE: 25845

SIZES AVAILABLE: 2m x 600mm

MATERIAL TYPES: Corriboard

General Safety Signs





PREVENT THE SPREAD OF COVID-19

PRODUCT CODE: 25599

SIZES AVAILABLE: 200 x 300mm, 300 x 400mm, 400 x 600mm, 600 x 800mm & 800 x 1200mm

MATERIAL TYPES: Corriboard, Foamex PVC, Dibond or Poster Paper



COVID-19 SYMPTOMS

PRODUCT CODE: 25604

SIZES AVAILABLE: 200 x 300mm, 300 x 400mm, 400 x 600mm, 600 x 800mm and 800 x 1200mm

MATERIAL TYPES: Corriboard, Foamex PVC, Dibond or Poster Paper

WASH YOUR HANDS

Protect yourself and others from getting COVID-19



WASH YOUR HANDS COVID-19

PRODUCT CODE: 25605

SIZES AVAILABLE: 200 x 300mm, 300 x 400mm, 400 x 600mm, 600 x 800mm and 800 x 1200mm

MATERIAL TYPES: Corriboard, Foamex PVC, Dibond, Poster Paper & Self Adhesive



**Please use
your own cup
and thoroughly
wash and dry
canteen utensils
after each use**

PLEASE USE YOUR OWN CUP & THOROUGHLY WASH & DRY CANTEEN UTENSILS

PRODUCT CODE: 25617

SIZES AVAILABLE: 200 x 300mm, 300 x 400mm

MATERIAL TYPES: Corriboard, Foamex PVC, Poster Paper & Self Adhesive



**Please wash
your hands
before and
after eating
and wipe down
the countertop
when finished**

PLEASE WASH YOUR HANDS BEFORE & AFTER EATING & WIPE DOWN THE COUNTERTOP WHEN FINISHED

PRODUCT CODE: 25615

SIZES AVAILABLE: 200 x 300mm, 300 x 400mm

MATERIAL TYPES: Corriboard, Foamex PVC, Poster Paper & Self Adhesive



**Now wash
your hands**

NOW WASH YOUR HANDS

PRODUCT CODE: CSSC2

SIZES AVAILABLE: 200 x 300mm, 300 x 400mm

MATERIAL TYPES: Corriboard, Foamex PVC, Poster Paper & Self Adhesive





**Instant hand
sanitiser
Use between
hand washing**

INSTANT HAND SANITISER USE BETWEEN HAND WASHING MANDATORY

PRODUCT CODE: HHSA58

SIZES AVAILABLE: 200 x 300mm, 300 x 400mm

MATERIAL TYPES: Corriboard, Foamex PVC, Poster Paper & Self Adhesive



**Please bring in
your own
food utensils
and wash/dry
after use**

PLEASE BRING IN YOUR OWN FOOD UTENSILS AND WASH DRY AFTER USE

PRODUCT CODE: 25613

SIZES AVAILABLE: 200 x 300mm, 300 x 400mm

MATERIAL TYPES: Corriboard, Foamex PVC, Poster Paper & Self Adhesive



**Help prevent the
spread of flu and
other viruses**



Catch it

Cover your nose and mouth
with a clean tissue when you
cough or sneeze



Bin it

Dispose of used tissues
in your nearest bin as soon
as possible



Kill it

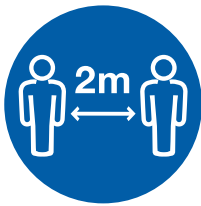
Washing your hands
immediately and cleaning
surfaces, helps prevent
the spread of germs

CATCH IT BIN IT KILL IT

PRODUCT CODE: 25643

SIZES AVAILABLE: 200 x 300mm, 300 x 400mm, 400 x 600mm

MATERIAL TYPES: Corriboard, Foamex PVC, Poster Paper & Self Adhesive



Social Distancing

To protect yourself and our staff we are only allowing one customer in at a time.

Please wait outside until the person before you has left, try to maintain a distance of 2 metres between you and others.

KEEP YOUR SOCIAL DISTANCING

PRODUCT CODE: 25644

SIZES AVAILABLE: 200 x 300mm, 300 x 400mm, 400 x 600mm

MATERIAL TYPES: Corriboard, Foamex PVC, Poster Paper & Self Adhesive



WARNING
Biological
hazard

WARNING BIOLOGICAL HAZARD CHEMICAL & SUBSTANCE HAZARD

PRODUCT CODE: IWSJ8

SIZES AVAILABLE: 150 x 200mm, 200 x 300mm, 300 x 400mm, 400 x 600mm

MATERIAL TYPES: Corriboard, Foamex PVC, Poster Paper & Self Adhesive



WARNING
Risk of
infection

WARNING RISK OF INFECTION CHEMICAL & SUBSTANCE HAZARD

PRODUCT CODE: IWSJ7

SIZES AVAILABLE: 150 x 200mm, 200 x 300mm, 300 x 400mm, 400 x 600mm

MATERIAL TYPES: Corriboard, Foamex PVC, Poster Paper & Self Adhesive



WARNING
Biohazard
area

**Wear personal
protective
clothing**

WARNING BIOHAZARD AREA WEAR PERSONAL PROTECTIVE CLOTHING CHEMICAL & SUBSTANCE HAZARD

PRODUCT CODE: IWSJ59

SIZES AVAILABLE: 150 x 200mm, 200 x 300mm, 300 x 400mm, 400 x 600mm

MATERIAL TYPES: Corriboard, Foamex PVC, Poster Paper & Self Adhesive



CAUTION
Quarantine
area

CAUTION QUARANTINE AREA

PRODUCT CODE: 25645

SIZES AVAILABLE: 150 x 200mm, 200 x 300mm, 300 x 400mm, 400 x 600mm

MATERIAL TYPES: Corriboard, Foamex PVC, Poster Paper & Self Adhesive



**Danger of
infection**

DANGER OF INFECTION

PRODUCT CODE: 25646

SIZES AVAILABLE: 150 x 200mm, 200 x 300mm, 300 x 400mm, 400 x 600mm

MATERIAL TYPES: Corriboard, Foamex PVC, Poster Paper & Self Adhesive



**We are
self isolating**



**PLEASE
do not enter**

WE ARE SELF ISOLATING PLEASE DO NOT ENTER

PRODUCT CODE: 25647

SIZES AVAILABLE: 150 x 200mm, 200 x 300mm, 300 x 400mm, 400 x 600mm

MATERIAL TYPES: Corriboard, Foamex PVC, Poster Paper & Self Adhesive



Caution

We have put the following
preventative measures in place
to protect our customers and staff
from contracting COVID-19



Protect yourself and others

To reduce the risk of infection
please use the hand sanitiser
provided before entering
and leaving the building



Follow Social Distancing

Please distance yourself
at least 2 metres (6 feet)
away from other people
at all times



Avoid touching

surfaces and products
unless absolutely necessary

CAUTION PREVENTATIVE MEASURES IN PLACE

PRODUCT CODE: 25648

SIZES AVAILABLE: 150 x 200mm, 200 x 300mm, 300 x 400mm, 400 x 600mm

MATERIAL TYPES: Corriboard, Foamex PVC, Poster Paper & Self Adhesive



**Please do not
enter.
This building
has been closed
for a deep clean**

PLEASE DO NOT ENTER - THIS BUILDING HAS BEEN CLOSED FOR A DEEP CLEAN

PRODUCT CODE: 25649

SIZES AVAILABLE: 150 x 200mm, 200 x 300mm, 300 x 400mm, 400 x 600mm

MATERIAL TYPES: Corriboard, Foamex PVC, Poster Paper & Self Adhesive





**Please do not
shake hands**

PLEASE DO NOT SHAKE HANDS

PRODUCT CODE: 25650

SIZES AVAILABLE: 150 x 200mm, 200 x 300mm, 300 x 400mm, 400 x 600mm

MATERIAL TYPES: Corriboard, Foamex PVC, Poster Paper & Self Adhesive



**Hand
sanitiser
station**

HAND SANITISER STATION

PRODUCT CODE: 25715

SIZES AVAILABLE: 150 x 200mm, 200 x 300mm, 300 x 400mm, 400 x 600mm

MATERIAL TYPES: Corriboard, Foamex PVC, Poster Paper & Self Adhesive



Floor Stickers





CORONAVIRUS CIRCULAR FLOOR STICKER

PRODUCT CODE: 25618

SIZES AVAILABLE: 400mm Diameter

MATERIAL TYPES: Self Adhesive Floor Vinyl with Durable Textured Anti-Slip Laminate



CORONAVIRUS OVAL FLOOR STICKER

PRODUCT CODE: 25666

SIZES AVAILABLE: 450 x 300mm

MATERIAL TYPES: Self Adhesive Floor Vinyl with Durable Textured Anti-Slip Laminate



CORONAVIRUS DIRECTIONAL ARROW FLOOR STICKER

PRODUCT CODE: 25655

SIZES AVAILABLE: 300mm Diameter

MATERIAL TYPES: Self Adhesive Floor Vinyl with Durable Textured Anti-Slip Laminate



SOCIAL DISTANCING FOOTPRINTS FLOOR STICKER

PRODUCT CODE: 25808

SIZES AVAILABLE: 400mm Diameter

MATERIAL TYPES: Self Adhesive Floor Vinyl with Durable Textured Anti-Slip Laminate



COVID-19 ONE WAY SYSTEM IN OPERATION FLOOR STICKER

PRODUCT CODE: 25893

SIZES AVAILABLE: 400mm Diameter

MATERIAL TYPES: Self Adhesive Floor Vinyl with Durable Textured Anti-Slip Laminate



REMEMBER SOCIAL DISTANCING FLOOR STICKER

PRODUCT CODE: 25911

SIZES AVAILABLE: 400mm Diameter

MATERIAL TYPES: Self Adhesive Floor Vinyl with Durable Textured Anti-Slip Laminate

**LET'S KEEP OUR SOCIAL DISTANCE FLOOR STICKER**

PRODUCT CODE: 25633

SIZES AVAILABLE: 400 x 400mm

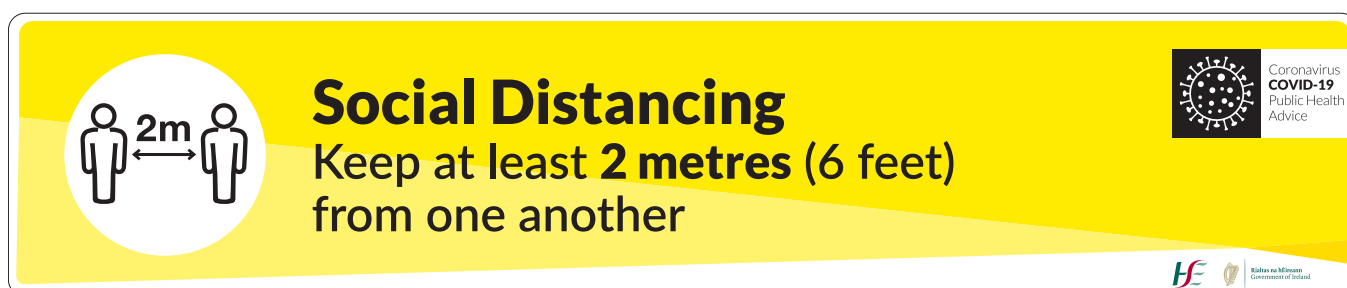
MATERIAL TYPES: Self Adhesive Floor Vinyl with Durable Textured Anti-Slip Laminate

**CORONAVIRUS SOCIAL DISTANCING FLOOR STICKER**

PRODUCT CODE: 25637

SIZES AVAILABLE: 1m x 75mm & 2m x 100mm

MATERIAL TYPES: Self Adhesive Floor Vinyl with Durable Textured Anti-Slip Laminate

**COVID-19 HSE FLOOR STICKER**

PRODUCT CODE: 25654

SIZES AVAILABLE: 1m x 210mm & 2m x 420mm

MATERIAL TYPES: Removable Adhesive Floor Vinyl with Anti-Slip Protective Laminate



Physical Distancing

For your safety please keep **2 metres** (6 feet) from one another in queues



Coronavirus
COVID-19
Public Health
Advice



Rialtas na hÉireann
Government of Ireland

PHYSICAL DISTANCING FLOOR STICKER

PRODUCT CODE: 25677

SIZES AVAILABLE: 1m x 210mm & 2m x 420mm

MATERIAL TYPES: Removable Adhesive Floor Vinyl with Anti-Slip Protective Laminate



PLEASE MAINTAIN 2 METRE DISTANCE FLOOR STICKER

PRODUCT CODE: 25700

SIZES AVAILABLE: 2.4m x 300mm

MATERIAL TYPES: Removable Adhesive Floor Vinyl with Anti-Slip Protective Laminate



2 METRE DISTANCE ARROW FLOOR STICKER

PRODUCT CODE: 25701

SIZES AVAILABLE: 2m x 150mm

MATERIAL TYPES: Removable Adhesive Floor Vinyl with Anti-Slip Protective Laminate





Please Keep Your Distance!



Coronavirus
COVID-19
Public Health
Advice

PLEASE KEEP YOUR DISTANCE FLOOR STICKER

PRODUCT CODE: 25702

SIZES AVAILABLE: 1m x 100mm

MATERIAL TYPES: Removable Adhesive Floor Vinyl with Anti-Slip Protective Laminate



Social Distancing

Keep at least 1 metre (3 feet)
ideally at least **2 metres** (6 feet) from one another



Coronavirus
COVID-19
Public Health
Advice



SOCIAL DISTANCING AT LEAST 1 METRE IDEALLY 2 METRES FLOOR

PRODUCT CODE: 25892

SIZES AVAILABLE: 1m x 210mm & 2m x 420mm

MATERIAL TYPES: Removable Adhesive Floor Vinyl with Anti-Slip Protective Laminate



Social Distancing **Floor Tapes**





PLEASE WAIT ON THIS LINE FLOOR TAPE

PRODUCT CODE: 25751

SIZES AVAILABLE: 48mm x 33m, Roll repeats every 502mm

MATERIAL TYPES: PVC Self Adhesive Base, over laminate with clear BOPP

Wall & Window Stickers





COVID-19 ONLY PERSONS PERMITTED IN THE CANTEEN AT ANY ONE TIME

PRODUCT CODE: 25849

SIZES AVAILABLE: 400mm Diameter

MATERIAL TYPES: Laminated Vinyl Sticker



COVID-19 ONLY PERSONS PERMITTED IN THIS MEETING ROOM AT ANY ONE TIME

PRODUCT CODE: 25851

SIZES AVAILABLE: 400mm Diameter

MATERIAL TYPES: Laminated Vinyl Sticker



COVID-19 ONLY PERSONS PERMITTED IN-STORE AT ANY ONE TIME

PRODUCT CODE: 25850

SIZES AVAILABLE: 400mm Diameter

MATERIAL TYPES: Laminated Vinyl Sticker



COVID-19 THIS ROOM CAN ONLY ACCOMMODATE PERSONS

PRODUCT CODE: 25847

SIZES AVAILABLE: 400mm Diameter

MATERIAL TYPES: Laminated Vinyl Sticker

Social Distancing Seat Stickers



**COVID-19 PLEASE LEAVE THIS SEAT FREE**

PRODUCT CODE: 25805

SIZES AVAILABLE: 150mm diameter

MATERIAL TYPES: Laminated Vinyl Sticker

**COVID-19 PLEASE SIT HERE**

PRODUCT CODE: 25807

SIZES AVAILABLE: 150mm diameter

MATERIAL TYPES: Laminated Vinyl Sticker

**COVID-19 SEAT OUT OF USE**

PRODUCT CODE: 25806

SIZES AVAILABLE: 150mm diameter

MATERIAL TYPES: Laminated Vinyl Sticker

**COVID-19 TABLE OUT OF USE**

PRODUCT CODE: 25822

SIZES AVAILABLE: 150mm diameter

MATERIAL TYPES: Laminated Vinyl Sticker



**COVID-19 PLEASE USE THIS TABLE**

PRODUCT CODE: 25825

SIZES AVAILABLE: 150mm diameter

MATERIAL TYPES: Laminated Vinyl Sticker

**COVID-19 PLEASE WIPE DOWN TABLE AND CHAIR AFTER USE**

PRODUCT CODE: 25823

SIZES AVAILABLE: 150mm diameter

MATERIAL TYPES: Laminated Vinyl Sticker

**COVID-19 SCAN TO VIEW MENU TABLE STICKER**

PRODUCT CODE: 25867

SIZES AVAILABLE: 100mm diameter

MATERIAL TYPES: Laminated Vinyl Sticker

COVID-19 Hygiene Stations





AUTO HAND SANITISER DISPENSER STRAIGHT STAND

PRODUCT CODE: 25803

SIZES AVAILABLE: Height 1200mm

MATERIAL: Board Thickness 36 mm, Heavyweight Base 330 mm, Automatic Fluid Dispenser (Battery Powered), Attachable PVC Board



MANUAL HAND SANITISER STRAIGHT STAND

PRODUCT CODE: 25853

SIZES AVAILABLE: Height 1200mm

MATERIAL: Board Thickness 36 mm, Heavyweight Base 330 mm, Manual Fluid Dispenser, Attachable PVC Board





ELBOW HAND SANITISER STRAIGHT STAND

PRODUCT CODE: 25855

SIZES AVAILABLE: Height 1200mm

MATERIAL: Board Thickness 36 mm, Heavyweight Base 330 mm,
Manual Fluid Dispenser,
Attachable PVC Board



WALL MOUNTED AUTOMATIC HAND SANITISER DISPENSER

PRODUCT CODE: 25912

SIZES AVAILABLE: 300 x 400mm

MATERIAL: 10mm Foamex
Automatic Fluid Dispenser (Battery Powered)



WALL MOUNTED MANUAL HAND SANITISER DISPENSER

PRODUCT CODE: 25917

SIZES AVAILABLE: 300 x 400mm

MATERIAL: 10mm Foamex
Manual Fluid Dispenser



WALL MOUNTED AUTO SANITATION STATION

PRODUCT CODE: 25907

SIZES AVAILABLE: 400 x 600mm

MATERIAL: 10mm Foamex
Automatic Fluid Dispenser (Battery Powered)
Includes 500ml of surface spray



WALL MOUNTED MANUAL SANITATION STATION

PRODUCT CODE: 25862

SIZES AVAILABLE: 400 x 600mm

MATERIAL: 10mm Foamex
Manual Fluid Dispenser
Includes 500ml of surface spray

Free Standing Display Stands





COVID-19 DESKTOP AWARENESS

PRODUCT CODE: 25611

SIZES AVAILABLE: A4 & A5

MATERIAL TYPES: Strut Card

PLEASE NOTE: All signs are available in this format. Please specify



COVID-19 PORTABLE A BOARD STAND

PRODUCT CODE: 25660

SIZES AVAILABLE: 600 x 800mm & 800 x 1200mm

MATERIAL TYPES: Corriboard

PLEASE NOTE: All signs are available in this format. Please specify



CORONAVIRUS INFORMATION STAND

PRODUCT CODE: 25619

SIZES AVAILABLE: A4

MATERIAL TYPES: Black A4 Frame, Pole Height 830mm - 1500mm

PLEASE NOTE: All signs are available in this format. Please specify



CORONAVIRUS SANDWICH BOARD

PRODUCT CODE: 25634

SIZES AVAILABLE: A1 - 574mm (w) x 821mm (h)
A0 - 821mm (w) x 1169mm (h)

DISPLAY TYPE: Double sided

PLEASE NOTE: All signs are available in this format. Please specify



CORONAVIRUS INFECTION CONTROL ROLL UP BANNER

PRODUCT CODE: 25635



DISPLAY TYPE: Single-sided

MATERIAL TYPES: Scrimless Pet Grey Black, 125 micron in thickness

Venus 850

GRAPHIC DISPLAY SIZE: 850mm (w) x 2050mm (h)

TOTAL DISPLAY SIZE: 850mm (w) x 2200mm (h)

Venus 1200

GRAPHIC DISPLAY SIZE: 1200mm (w) x 2050mm (h)

TOTAL DISPLAY SIZE: 1200mm (w) x 2200mm (h)

Venus 1500

GRAPHIC DISPLAY SIZE: 1500mm (w) x 2050mm (h)

TOTAL DISPLAY SIZE: 1500mm (w) x 2200mm (h)

PLEASE NOTE: All signs are available in this format. Please specify



SOCIAL DISTANCING FORECOURT DISPLAY STAND - THE ICON

PRODUCT CODE: 25651

SIZES AVAILABLE: A1 580mm (w) x 827mm (h)
A0 - 1189 x 841mm
60" x 40" - 1524mm x 1016mm

DISPLAY TYPE: Double sided, Base: Black, water/sand fillable base for extra stability. Supplied with in-built wheels for ease of movement.

PLEASE NOTE: All signs are available in this format. Please specify



CORONAVIRUS INFECTION CONTROL WEDGE

PRODUCT CODE: 25636

SIZES AVAILABLE: 410mm (w) x 740mm (h)

DISPLAY TYPE: Double sided, Base: Heavy Duty PVC base

PLEASE NOTE: All signs are available in this format. Please specify



PLEASE ENSURE SOCIAL DISTANCING BOLLARD COVERS

PRODUCT CODE: 25627

SIZES AVAILABLE: 200mm x 1000mm & 200mm x 1200mm

MATERIAL TYPES: Corriboard

COVER SHAPE: 3 sided triangular

PLEASE NOTE: All signs are available in this format. Please specify when ordering



SOCIAL DISTANCING WINDMASTER DISPLAY STAND

PRODUCT CODE: 25675

SIZES AVAILABLE: A1 - 1554 x 780 x 500mm
A0 - 1554 x 1010 x 625mm

DISPLAY TYPE: Double sided, weather resistant, wheeled compact moulded hollow base for water or sand weighting and easy to transport

PLEASE NOTE: All signs are available in this format. Please specify



SOCIAL DISTANCING SPIDER STAKE

PRODUCT CODE: 25861

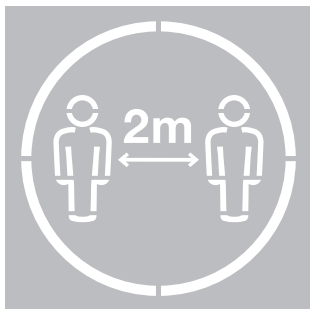
STAKE SIZE: 200mm x 660mm

SIGN INSERT SIZE: 600mm diameter

External Use - Painting **Stencils**

QUEUE HERE





CORONAVIRUS SOCIAL DISTANCING CIRCULAR STENCIL

PRODUCT CODE: 25663

SIZES AVAILABLE: 600 x 600mm

MATERIAL TYPES: 3mm Grey Polycraft (Rigid Polystyrene)



CORONAVIRUS SOCIAL DISTANCING HUMAN LINE STENCIL

PRODUCT CODE: 25665

SIZES AVAILABLE: 2440 x 450mm

MATERIAL TYPES: 3mm Grey Polycraft (Rigid Polystyrene)



CORONAVIRUS SOCIAL DISTANCING FACE LINE STENCIL

PRODUCT CODE: 25664

SIZES AVAILABLE: 2440 x 350mm

MATERIAL TYPES: 3mm Grey Polycraft (Rigid Polystyrene)



COVID-19 QUEUE HERE STENCIL

PRODUCT CODE: 25741

SIZES AVAILABLE: 600 x 125mm

MATERIAL TYPES: 3mm Grey Polycraft (Rigid Polystyrene)

**COVID-19 VERTICAL HUMAN LINE STENCIL**

PRODUCT CODE: 25810

SIZES AVAILABLE: 350 x 2440mm

MATERIAL TYPES: 3mm Grey Polycraft (Rigid Polystyrene)

PLEASE KEEP YOUR DISTANCE**COVID-19 PLEASE KEEP YOUR DISTANCE STENCIL**

PRODUCT CODE: 25829

SIZES AVAILABLE: 1200 x 200mm

MATERIAL TYPES: 3mm Grey Polycraft (Rigid Polystyrene)

**COVID-19 PLEASE KEEP YOUR DISTANCE HUMAN ARROW STENCIL**

PRODUCT CODE: 25830

SIZES AVAILABLE: 2440 x 350mm

MATERIAL TYPES: 3mm Grey Polycraft (Rigid Polystyrene)



021 431 1607



sales@pdsigns.ie



www.pdsigns.ie