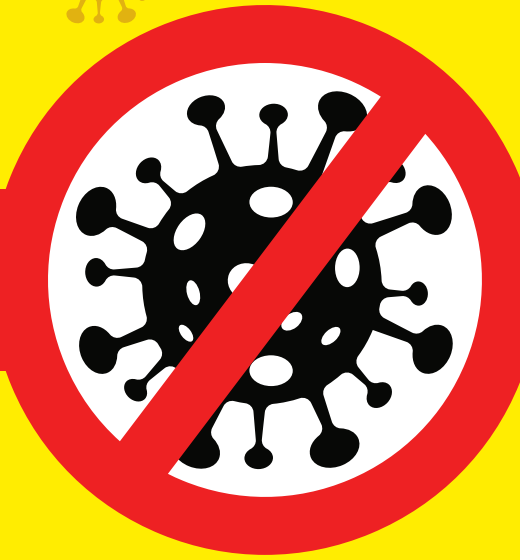


Coronavirus **COVID-19**



STOP THE SPREAD



PREVENTATIVE SIGNS

.....
See our extensive range of COVID-19 specific
preventative signs in line with **WHO & ECDC** guidelines
.....

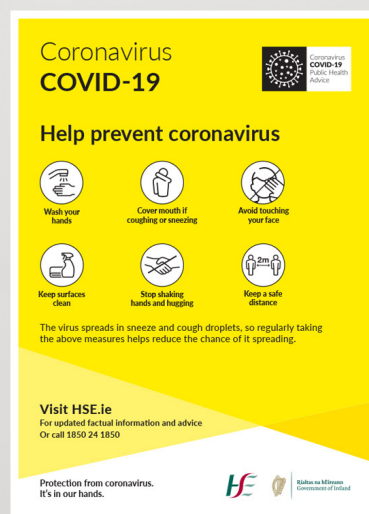


Contents

HSE Specific Signs.....	3-20
COVID-19 PPE Signage.....	21-24
CIF Specific Signs.....	25-27
Construction Personal Safety Equipment.....	28-29
Coronavirus Construction Safety Signs.....	30-49
General Safety Signs.....	50-57
Floor Stickers.....	58-62
Social Distancing Floor Tapes.....	63-65
Seat Stickers.....	66-68
COVID-19 Hygiene Station.....	69-70
Free Standing Displays.....	71-74
Stencils.....	75-77



HSE Specific Signs



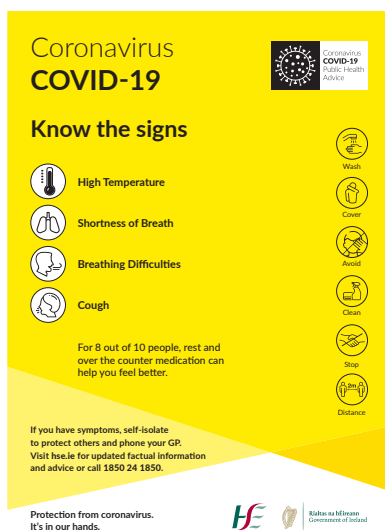


COVID-19 HSE

PRODUCT CODE: 25602

SIZES AVAILABLE: A4, A3, A2, A1, A0

MATERIAL TYPES: Corriboard, Foamex PVC, Dibond or Poster Paper



CORONAVIRUS KNOW THE SYMPTOMS HSE

PRODUCT CODE: 25623

SIZES AVAILABLE: A4, A3, A2, A1, A0

MATERIAL TYPES: Corriboard, Foamex PVC, Dibond or Poster Paper

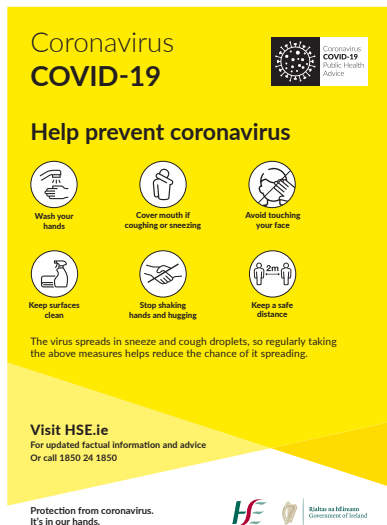


WHO IS MOST AT RISK CORONAVIRUS HSE

PRODUCT CODE: 25621

SIZES AVAILABLE: A4, A3, A2, A1, A0

MATERIAL TYPES: Corriboard, Foamex PVC, Dibond or Poster Paper



HELP PREVENT CORONAVIRUS SPREAD HSE

PRODUCT CODE: 25620

SIZES AVAILABLE: A4, A3, A2, A1, A0

MATERIAL TYPES: Corriboard, Foamex PVC, Dibond or Poster Paper



COVID-19 KIDS HSE

PRODUCT CODE: 25601

SIZES AVAILABLE: A4, A3, A2, A1, A0

MATERIAL TYPES: Corriboard, Foamex PVC, Dibond or Poster Paper



HAND HYGIENE HSE

PRODUCT CODE: 25606

SIZES AVAILABLE: A4, A3, A2, A1, A0

MATERIAL TYPES: Corriboard, Foamex PVC, Dibond or Poster Paper



Coronavirus COVID-19

If you have fever and/or cough you should stay at home regardless of your travel or contact history.

If you have returned from an area that is subject to travel restrictions due to COVID-19 you should restrict your movement for 14 days. Check the list of affected areas on www.dfa.ie

All People Are Advised To:

- Reduce social interactions
- Keep a distance of 2m between you and other people
- Do not shake hands or make close contact where possible

If you have symptoms visit hse.ie or phone HSE Live 1850 24 1850

Symptoms

- Fever (High Temperature)
- A Cough
- Shortness of Breath
- Breathing Difficulties

How to Prevent

- Stop** shaking hands or hugging when saying hello or greeting other people
- Distance** yourself at least 2 metres (6 feet) away from other people, especially those who might be unwell
- Wash** your hands well and often to avoid contamination
- Cover** your mouth and nose with a tissue or sleeve when coughing or sneezing and discard used tissue
- Avoid** touching eyes, nose, or mouth with unwashed hands
- Clean** and disinfect frequently touched objects and surfaces

For Daily Updates Visit
www.gov.ie/health-coronavirus
www.hse.ie

Ireland is operating a delay strategy in line with WHO and ECDC advice

HE HSE Rialtas na hÉireann Government of Ireland

CORONAVIRUS HSE STAY AT HOME

PRODUCT CODE: 25638

SIZES AVAILABLE: A4, A3, A2, A1, A0

MATERIAL TYPES: Corriboard, Foamex PVC, Dibond or Poster Paper

Coronavirus COVID-19

If you have fever and/or cough you should stay at home regardless of your travel or contact history.

If you feel unwell with cough or fever:

- please phone your doctor for medical advice or
- please phone the pharmacy for a supply of your medicines or advice about your medicines.

This helps to protect you, other people and staff visiting the pharmacy today.

Phone us first

Tel:

Wash your hands well and often to avoid contamination

Cover your mouth and nose with a tissue or sleeve when coughing or sneezing and discard used tissue

Avoid touching eyes, nose, or mouth with unwashed hands

Clean and disinfect frequently touched objects and surfaces

Stop shaking hands or hugging when saying hello or greeting other people

Distance yourself at least 2 metres (6 feet) away from other people, especially those who might be unwell

For more information visit hse.ie or phone HSELive on 1850 24 1850

HE HSE Rialtas na hÉireann Government of Ireland

COVID-19 PHARMACY DOOR

PRODUCT CODE: 25639

SIZES AVAILABLE: A4, A3

MATERIAL TYPES: Corriboard, Poster Paper or Self Adhesive

Coronavirus COVID-19

If you feel unwell with cough, shortness of breath or fever: **please phone the doctor first for medical advice.**

This helps to protect other people visiting this surgery today.

Phone us first

Tel:

Wash your hands well and often to avoid contamination

Cover your mouth and nose with a tissue or sleeve when coughing or sneezing and bin used tissue

Avoid touching eyes, nose, or mouth with unwashed hands

Clean and disinfect frequently touched objects and surfaces

For more information visit hse.ie or phone HSELive on 1850 24 1850

HE HSE Rialtas na hÉireann Government of Ireland

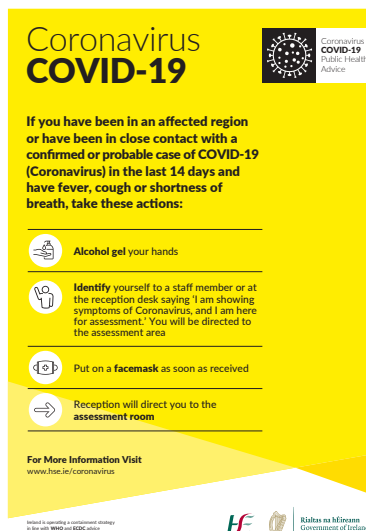
GP CORONAVIRUS FRONT DOOR

PRODUCT CODE: 25640

SIZES AVAILABLE: A4, A3

MATERIAL TYPES: Corriboard, Poster Paper or Self Adhesive





HSE EMERGENCY DEPARTMENT CORONAVIRUS MEASURES

PRODUCT CODE: 25641

SIZES AVAILABLE: A4, A3, A2, A1, A0

MATERIAL TYPES: Corriboard, Foamex PVC, Dibond or Poster Paper



VISITORS PROTECT YOUR LOVED ONES HSE

PRODUCT CODE: 25642

SIZES AVAILABLE: A4, A3, A2, A1, A0

MATERIAL TYPES: Corriboard, Foamex PVC, Dibond or Poster Paper



COVER YOUR COUGH & SNEEZE THE RIGHT WAY HSE

PRODUCT CODE: 25600

SIZES AVAILABLE: A4, A3, A2, A1, A0

MATERIAL TYPES: Corriboard, Foamex PVC, Dibond or Poster Paper



COVID-19 PROTECT EACH OTHER PLAY APART HSE

PRODUCT CODE: 25626

SIZES AVAILABLE: 600 x 600mm, 800 x 800mm & 1200 x 1200mm

MATERIAL TYPES: Corriboard, Foamex PVC, Dibond or Poster Paper



COVID-19 PROTECT EACH OTHER SHOP APART HSE

PRODUCT CODE: 25628

SIZES AVAILABLE: 600 x 600mm, 800 x 800mm & 1200 x 1200mm

MATERIAL TYPES: Corriboard, Foamex PVC, Dibond or Poster Paper



COVID-19 PROTECT EACH OTHER SIT APART HSE

PRODUCT CODE: 25631

SIZES AVAILABLE: 600 x 600mm, 800 x 800mm & 1200 x 1200mm

MATERIAL TYPES: Corriboard, Foamex PVC, Dibond or Poster Paper



COVID-19 STAND APART HSE

PRODUCT CODE: 25659

SIZES AVAILABLE: 600 x 600mm, 800 x 800mm & 1200 x 1200mm

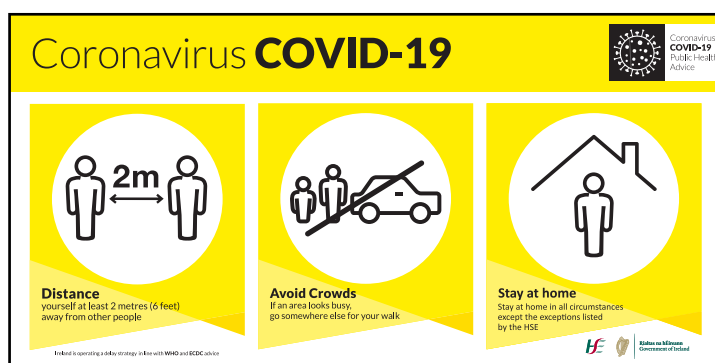
MATERIAL TYPES: Corriboard, Foamex PVC, Dibond or Poster Paper

**CORONAVIRUS CAR PARK CLOSED**

PRODUCT CODE: 25686

SIZES AVAILABLE: 1200 x 600mm, 1800 x 900mm, 2400 x 1200mm

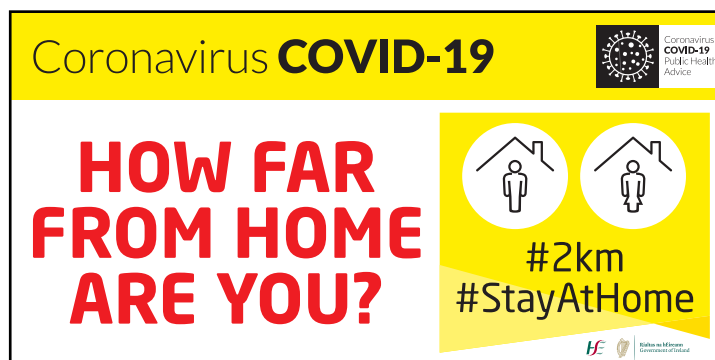
MATERIAL TYPES: Corriboard, Foamex, PVC, Dibond or Poster Paper

**SOCIAL DISTANCING PREVENTIVE MEASURES**

PRODUCT CODE: 25687

SIZES AVAILABLE: 800 x 400mm, 1200 x 600mm, 1800 x 900mm, 2400 x 1200mm

MATERIAL TYPES: Corriboard, Foamex, PVC, Dibond or Poster Paper

**CORONAVIRUS HOW FAR FROM HOME ARE YOU**

PRODUCT CODE: 25685

SIZES AVAILABLE: 1200 x 600mm, 1800 x 900mm, 2400 x 1200mm

MATERIAL TYPES: Corriboard, Foamex, PVC, Dibond or Poster Paper

**PLEASE ENSURE SOCIAL DISTANCING**

PRODUCT CODE: 25696

SIZES AVAILABLE: A4, A3, A2, A1, A0

MATERIAL TYPES: Corriboard, Foamex, Solid PVC, Sticker or Poster Paper

**CORONAVIRUS SHOP APART**

PRODUCT CODE: 25697

SIZES AVAILABLE: A4, A3, A2, A1, A0

MATERIAL TYPES: Corriboard, Foamex, Solid PVC, Sticker or Poster Paper

**CORONAVIRUS SOCIAL DISTANCING OUTSIDE HSE**

PRODUCT CODE: 25625

SIZES AVAILABLE: A4, A3, A2, A1, A0

MATERIAL TYPES: Corriboard, Foamex, Solid PVC, Sticker or Poster Paper

**DISPOSE OF GLOVES RESPONSIBLY**

PRODUCT CODE: 25713

SIZES AVAILABLE: A4, A3, A2, A1, A0

MATERIAL TYPES: Corriboard, Foamex, Solid PVC, Sticker or Poster Paper

**COVID-19 CONTACTLESS PAYMENT**

PRODUCT CODE: 25708

SIZES AVAILABLE: A4, A3, A2, A1, A0

MATERIAL TYPES: Corriboard, Foamex, Solid PVC, Sticker or Poster Paper

**COVID-19 STORE PROTOCOLS**

PRODUCT CODE: 25739

SIZES AVAILABLE: A4, A3, A2, A1, A0

MATERIAL TYPES: Corriboard, Foamex, Solid PVC, Sticker or Poster Paper



Coronavirus
COVID-19



Coronavirus
COVID-19
Public Health
Advice

**This room can
only accomodate
..... persons.**



**Please knock
and await instructions**

SOCIAL DISTANCING ROOM CAN ONLY ACCOMMODATE PERSONS

PRODUCT CODE: 25748

SIZES AVAILABLE: A4, A3, A2, A1, A0

MATERIAL TYPES: Corriboard, Foamex, Solid PVC, Sticker or Poster Paper

Coronavirus
COVID-19



Coronavirus
COVID-19
Public Health
Advice



ELEVATOR

**There should not
be more than
..... persons
per elevator**

COVID-19 THERE SHOULD NOT BE MORE THAN PERSONS PER ELEVATOR

PRODUCT CODE: 25749

SIZES AVAILABLE: A4, A3, A2, A1, A0

MATERIAL TYPES: Corriboard, Foamex, Solid PVC, Sticker or Poster Paper

Coronavirus
COVID-19



Coronavirus
COVID-19
Public Health
Advice



Please Queue Here



**Please keep a safe
distance at all times**

COVID-19 PLEASE QUEUE HERE

PRODUCT CODE: 25785

SIZES AVAILABLE: A4, A3, A2, A1, A0

MATERIAL TYPES: Corriboard, Foamex, Solid PVC, Sticker or Poster Paper





Coronavirus COVID-19



Coronavirus
COVID-19
Public Health
Advice

In-store COVID-19 Safety Information



Please keep a safe
distance at all times



Wash and sanitise
your hands with the
facilities provided



Use contactless
payment in-store
when possible

COVID-19 IN-STORE SAFETY INFORMATION

PRODUCT CODE: 25786

SIZES AVAILABLE: A4, A3, A2, A1, A0

MATERIAL TYPES: Corriboard, Foamex, Solid PVC, Sticker or Poster Paper

Coronavirus COVID-19



Coronavirus
COVID-19
Public Health
Advice



**One way system
in operation**



ONE WAY SYSTEM IN OPERATION ARROW DOWN

PRODUCT CODE: 25787

SIZES AVAILABLE: A4, A3, A2, A1, A0

MATERIAL TYPES: Corriboard, Foamex, Solid PVC, Sticker or Poster Paper

Coronavirus COVID-19



Coronavirus
COVID-19
Public Health
Advice



**One way system
in operation**

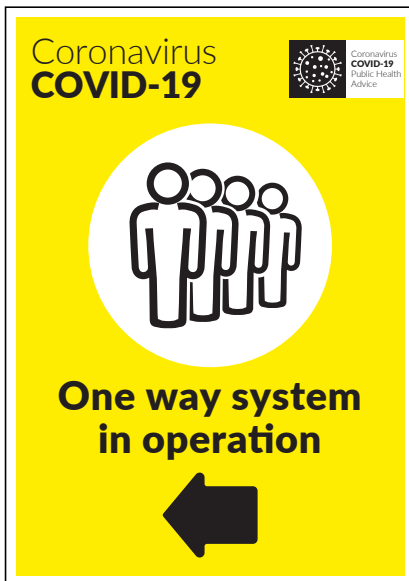


ONE WAY SYSTEM IN OPERATION ARROW UP

PRODUCT CODE: 25788

SIZES AVAILABLE: A4, A3, A2, A1, A0

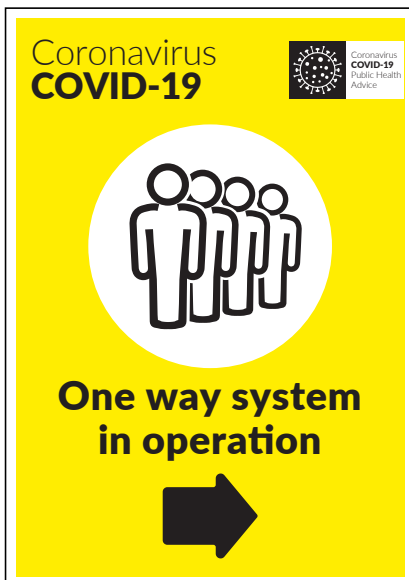
MATERIAL TYPES: Corriboard, Foamex, Solid PVC, Sticker or Poster Paper

**ONE WAY SYSTEM IN OPERATION ARROW LEFT**

PRODUCT CODE: 25789

SIZES AVAILABLE: A4, A3, A2, A1, A0

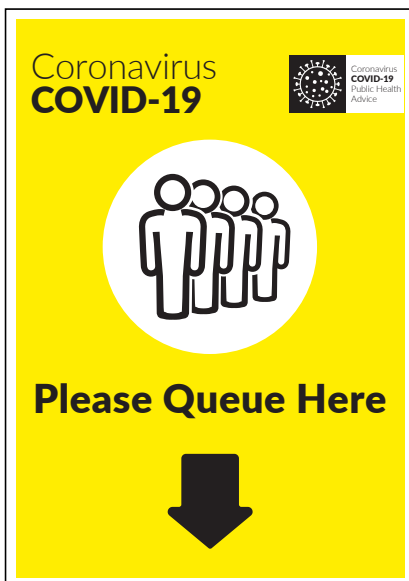
MATERIAL TYPES: Corriboard, Foamex, Solid PVC, Sticker or Poster Paper

**ONE WAY SYSTEM IN OPERATION ARROW RIGHT**

PRODUCT CODE: 25790

SIZES AVAILABLE: A4, A3, A2, A1, A0

MATERIAL TYPES: Corriboard, Foamex, Solid PVC, Sticker or Poster Paper

**COVID-19 PLEASE QUEUE HERE ARROW DOWN**

PRODUCT CODE: 25791

SIZES AVAILABLE: A4, A3, A2, A1, A0

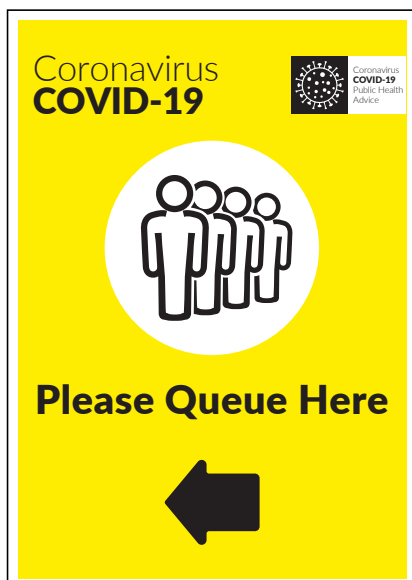
MATERIAL TYPES: Corriboard, Foamex, Solid PVC, Sticker or Poster Paper

**COVID-19 PLEASE QUEUE HERE ARROW UP**

PRODUCT CODE: 25792

SIZES AVAILABLE: A4, A3, A2, A1, A0

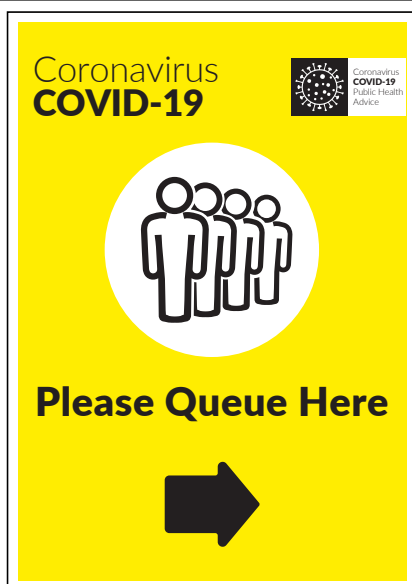
MATERIAL TYPES: Corriboard, Foamex, Solid PVC, Sticker or Poster Paper

**COVID-19 PLEASE QUEUE HERE ARROW LEFT**

PRODUCT CODE: 25793

SIZES AVAILABLE: A4, A3, A2, A1, A0

MATERIAL TYPES: Corriboard, Foamex, Solid PVC, Sticker or Poster Paper

**COVID-19 PLEASE QUEUE HERE ARROW RIGHT**

PRODUCT CODE: 25794

SIZES AVAILABLE: A4, A3, A2, A1, A0

MATERIAL TYPES: Corriboard, Foamex, Solid PVC, Sticker or Poster Paper

**COVID-19 PLEASE SIT HERE**

PRODUCT CODE: 25798

SIZES AVAILABLE: A4, A3, A2, A1, A0

MATERIAL TYPES: Corriboard, Foamex, Solid PVC, Sticker or Poster Paper

**COVID-19 PLEASE ENSURE THE SEAT ON EITHER SIDE IS VACANT**

PRODUCT CODE: 25796

SIZES AVAILABLE: A4, A3, A2, A1, A0

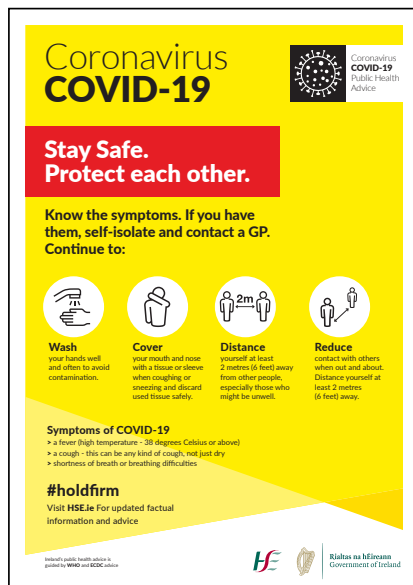
MATERIAL TYPES: Corriboard, Foamex, Solid PVC, Sticker or Poster Paper

**COVID-19 PLEASE LEAVE THIS SEAT FREE**

PRODUCT CODE: 25799

SIZES AVAILABLE: A4, A3, A2, A1, A0

MATERIAL TYPES: Corriboard, Foamex, Solid PVC, Sticker or Poster Paper

**COVID-19 STAY SAFE PROTECT EACH OTHER**

PRODUCT CODE: 25811

SIZES AVAILABLE: A4, A3, A2, A1, A0

MATERIAL TYPES: Corriboard, Foamex, Solid PVC, Sticker or Poster Paper

**COVID-19 PLEASE ORDER HERE**

PRODUCT CODE: 25812

SIZES AVAILABLE: A4, A3, A2, A1, A0

MATERIAL TYPES: Corriboard, Foamex, Solid PVC, Sticker or Poster Paper

**COVID-19 PLEASE PAY HERE**

PRODUCT CODE: 25813

SIZES AVAILABLE: A4, A3, A2, A1, A0

MATERIAL TYPES: Corriboard, Foamex, Solid PVC, Sticker or Poster Paper



Coronavirus COVID-19



Wash your hands with soap and water or with an alcohol-based hand rub regularly and in particular:

- After coughing and sneezing
- Before and after eating
- Before and after preparing food
- If in contact with someone who is displaying any COVID-19 symptoms,
- Before and after being on public transport
- Before and after being in a crowd
- When arriving and leaving the workplace/other sites
- Before having a cigarette or vaping
- When hands are dirty
- After toilet use

COVID-19 MULTI NOTICE HAND WASH

PRODUCT CODE: 25814

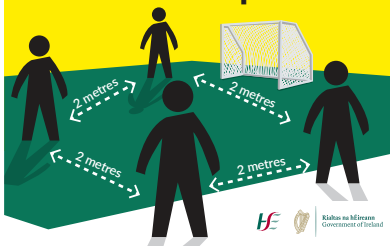
SIZES AVAILABLE: A4, A3, A2, A1, A0

MATERIAL TYPES: Corriboard, Foamex, Solid PVC, Sticker or Poster Paper

Coronavirus COVID-19



Protect each other Exercise apart



COVID-19 PROTECT EACH OTHER EXERCISE APART

PRODUCT CODE: 25815

SIZES AVAILABLE: 600 x 600mm, 800 x 800mm & 1200 x 1200mm

MATERIAL TYPES: Corriboard, Foamex PVC, Dibond or Poster Paper

Coronavirus COVID-19



How to wash your hands with soap and water

1. Wet your hands with warm water and apply soap.
2. Rub your hands together until the soap forms a lather.
3. Rub the top of your hands, between your fingers and under your fingernails.
4. Do this for about 20 seconds.
5. Rinse your hands under running water.
6. Dry your hands with a clean towel or paper towel.

COVID-19 HOW TO WASH YOUR HANDS

PRODUCT CODE: 25816

SIZES AVAILABLE: A4, A3, A2, A1, A0

MATERIAL TYPES: Corriboard, Foamex, Solid PVC, Sticker or Poster Paper

**COVID-19 DO NOT SHARE OFFICE STATIONERY**

PRODUCT CODE: 25817

SIZES AVAILABLE: A4, A3, A2, A1, A0

MATERIAL TYPES: Corriboard, Foamex, Solid PVC, Sticker or Poster Paper

**COVID-19 REMEMBER TO KEEP 2M APART IN THE SEATING AREA**

PRODUCT CODE: 25818

SIZES AVAILABLE: A4, A3, A2, A1, A0

MATERIAL TYPES: Corriboard, Foamex, Solid PVC, Sticker or Poster Paper

**COVID-19 CANTEEN PROTOCOLS**

PRODUCT CODE: 25831

SIZES AVAILABLE: A4, A3, A2, A1, A0

MATERIAL TYPES: Corriboard, Foamex, Solid PVC, Sticker or Poster Paper



COVID-19 CANTEEN PROTOCOLS

PRODUCT CODE: 25832

SIZES AVAILABLE: A4, A3, A2, A1, A0

MATERIAL TYPES: Corriboard, Foamex, Solid PVC, Sticker or Poster Paper

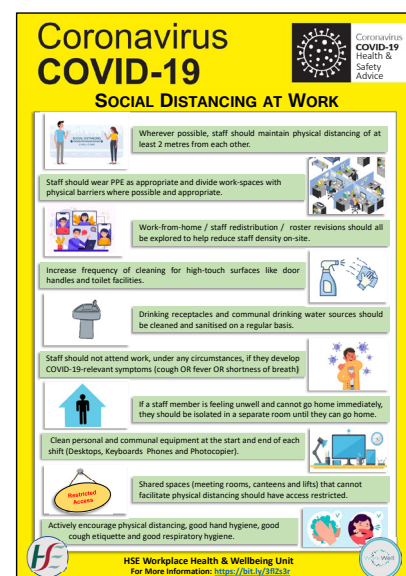


COVID-19 ISOLATION OFFICE

PRODUCT CODE: 25834

SIZES AVAILABLE: A4, A3, A2, A1, A0

MATERIAL TYPES: Corriboard, Foamex, Solid PVC, Sticker or Poster Paper



COVID-19 SOCIAL DISTANCING AT WORK

PRODUCT CODE: 25843

SIZES AVAILABLE: A4, A3, A2, A1, A0

MATERIAL TYPES: Corriboard, Foamex, Solid PVC, Sticker or Poster Paper

COVID-19 PPE Signage





COVID-19 SAFE USE OF MASKS

PRODUCT CODE: 25835

SIZES AVAILABLE: A4, A3, A2, A1, A0

MATERIAL TYPES: Corriboard, Foamex, Solid PVC, Sticker or Poster Paper

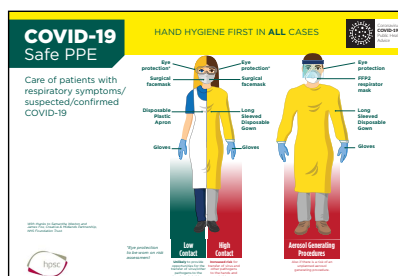


COVID-19 SAFE USE OF GLOVES

PRODUCT CODE: 25844

SIZES AVAILABLE: A4, A3, A2, A1, A0

MATERIAL TYPES: Corriboard, Foamex, Solid PVC, Sticker or Poster Paper



COVID-19 SAFE PPE

PRODUCT CODE: 25836

SIZES AVAILABLE: A4, A3, A2, A1, A0

MATERIAL TYPES: Corriboard, Foamex, Solid PVC, Sticker or Poster Paper

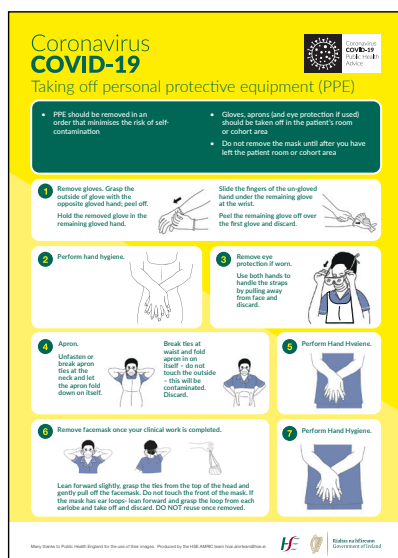


COVID-19 PUTTING ON PPE

PRODUCT CODE: 25837

SIZES AVAILABLE: A4, A3, A2, A1, A0

MATERIAL TYPES: Corriboard, Foamex, Solid PVC, Sticker or Poster Paper

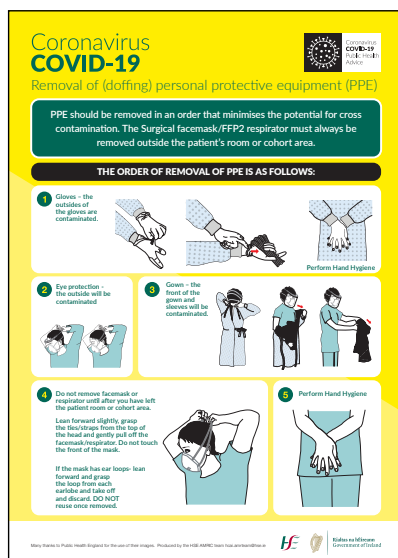


COVID-19 TAKING OFF PPE

PRODUCT CODE: 25838

SIZES AVAILABLE: A4, A3, A2, A1, A0

MATERIAL TYPES: Corriboard, Foamex, Solid PVC, Sticker or Poster Paper



COVID-19 DOFFING GOWNS

PRODUCT CODE: 25839

SIZES AVAILABLE: A4, A3, A2, A1, A0

MATERIAL TYPES: Corriboard, Foamex, Solid PVC, Sticker or Poster Paper





Coronavirus COVID-19
Doffing Coveralls in the context of COVID 19

DOFFING: if the isolation room has an ante room, the HCW can exit the isolation room and remove all PPE in the ante room. If the HCW is in a patient room or cohort area which does not have an ante room, remove PPE prior to exit EXCEPT for the surgical face mask/respirator mask which should be removed after exit from the patient room or cohort area.

1. Remove gloves and dispose.
2. Perform hand hygiene. The covered thumbs loop will still be in position, so proper hand hygiene will not be feasible.
3. Put on a new pair of gloves to complete the doffing process.
4. If wearing face shield remove now.
5. Grasp the outer edge of the hood and lift it up and off the head.
6. Remove the coverall. Untuck the coverall by lifting your head back, slide your fingers up to reach the top of the drape, holding the dip back, untuck completely without touching any skin or clothing.
7. A. Free your shoulders. B. Remove your arms from the coverall by keeping them behind your back and pulling each arm out of the sleeves, remove the gloves from each hand at the same time. C. Place hands back coverall and roll the coverall, from the waist down to the feet, step out of the coverall. **Never shake hands the inside of the coverall.**
8. Roll the used coverall into a ball, taking care not to touch the outside of the coverall. Discard the coverall into the healthcare risk waste bin.
9. Perform hand hygiene if wearing.
10. Remove Goggles or face mask. If in the patient room or cohort area, you must need to exit to the corridor to remove your mask. Perform hand hygiene.
11. Remove Respirator or Surgical Face mask. Lean forward slightly, grasp the top of the head and gently pull off the face mask. Do not touch the front of the mask. If the mask has ear loops, lean forward and grasp the top of the head and gently pull off the mask. If the mask has ties, grasp the top of the head and gently pull off the mask. Do not touch the front of the mask. If the mask has ties, grasp the top of the head and gently pull off the mask. Do not touch the front of the mask.
12. Perform hand hygiene.

Many thanks to Public Health England for the use of their images. Produced by the HSE/AMRC team and approved by HSE. HSE and HSE/AMRC team and approved by HSE.

COVID-19 DOFFING COVERALLS

PRODUCT CODE: 25840

SIZES AVAILABLE: A4, A3, A2, A1, A0

MATERIAL TYPES: Corriboard, Foamex, Solid PVC, Sticker or Poster Paper

Coronavirus COVID-19
Donning Coveralls in the context of COVID 19

PERFORM IN A DESIGNATED AREA OUTSIDE THE PATIENT ROOM

BEFORE YOU BEGIN

- Check you have a chair to sit on if needed.
- Check that items of PPE in your use are available and wear your own well-fitted hand dip.
- The sequence of donning PPE for a coverall with a hood is slightly different, depending on whether you are going to wear goggles or a visor. See below the recommended sequence for coverall with either goggles or visor below.

BEFORE YOU PUT ON PPE

- Be well hydrated and have taken a toilet break.
- Have removed all jewellery including earrings.
- Be bare below the elbows.
- Have secured your hair back off your face.
- Do not bring mobile phones/bags into an isolation area.

1. Perform hand hygiene.
2. Put on coverall, but do not put up the hood. Depending on the style of coverall, it may or may not have integrated feet. Your normal work shoes may be worn with the coverall.
3. Push your thumbs through the fabric, approximately one inch up from the wrist, and pull off the middle side of each coverall sleeve to create an artificial thumb loop.
4. Put on facemask - (FFP2) Mask for Aerosol Generating procedures only. Remember to Fit Check.
5. Put on your surgical face mask. For masks with ties, tie the upper straps on top of head and bring the lower straps up to front of the ears and fasten the mask with loops - loop straps over the ears. Should the metal strip over the bridge of the nose and make sure the mask is extended to cover your mouth and chin.
6. If wearing a visor, apply after hood is positioned.
7. Put on your eye protection if there is a risk of splashing.
8. Put on non-sterile nitrile gloves.
9. You are now ready to enter the patient room.

Check PPE is secure and comfortable - extend arms, bend at waist, turn and walk up and down - use the mirror to self-check and if available, ask your buddy to confirm

Many thanks to Public Health England for the use of their images. Produced by the HSE/AMRC team and approved by HSE. HSE and HSE/AMRC team and approved by HSE.

COVID-19 DONNING COVERALLS

PRODUCT CODE: 25841

SIZES AVAILABLE: A4, A3, A2, A1, A0

MATERIAL TYPES: Corriboard, Foamex, Solid PVC, Sticker or Poster Paper

Coronavirus COVID-19
Guide to donning and doffing standard Personal Protective Equipment (PPE)
FOR HEALTH AND SOCIAL CARE SETTINGS

DONNING OR PUTTING ON PPE

- Before putting on the PPE, perform hand hygiene.
- Be well hydrated and have taken a toilet break.
- Have removed all jewellery including earrings.
- Be bare below the elbows.
- Have secured your hair back off your face.
- Do not bring mobile phones/bags into an isolation area.

1. Put on your plastic apron, making sure it is fast securely at the back.
2. Put on your surgical face mask. For masks with ties, tie the upper straps on top of head and bring the lower straps up to front of the ears and fasten the mask with loops - loop straps over the ears. Should the metal strip over the bridge of the nose and make sure the mask is extended to cover your mouth and chin.
3. Put on your eye protection if there is a risk of splashing.
4. Put on non-sterile nitrile gloves.
5. You are now ready to enter the patient room.

DOFFING OR TAKING OFF PPE

Surgical face masks may be used for single session use but gloves and apron must be changed between patients/residents.

1. Remove gloves, grasp the outside of the cuff of the glove and peel off, holding the glove in the gloved hand, insert the finger underneath and peel off second glove.
2. Perform hand hygiene.
3. Remove eye protection.
4. Untuck the apron and peel off the apron, holding the apron by the ties, do not touch the outside as it is contaminated, and put into Healthcare risk waste.
5. Perform hand hygiene.
6. Once outside the patient room or cohort area, remove surgical face mask.
7. Perform hand hygiene.

Many thanks to Public Health England for the use of their images. Produced by the HSE/AMRC team and approved by HSE. HSE and HSE/AMRC team and approved by HSE.

COVID-19 DONNING AND DOFFING HEALTH SOCIAL CARE SETTINGS PLAN

PRODUCT CODE: 25842

SIZES AVAILABLE: A4, A3, A2, A1, A0

MATERIAL TYPES: Corriboard, Foamex, Solid PVC, Sticker or Poster Paper



ClF Specific Signs



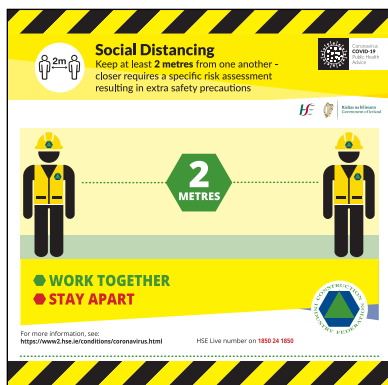
Social Distancing
Keep at least 2 metres (6 feet) from one another

2 METRES
(At least 1 metre)

WORK TOGETHER
STAY APART

For more information, see:
<https://www2.hse.ie/conditions/coronavirus.html>

HSE Live number on 1850 24 1850

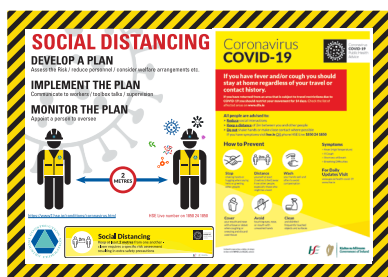


CONSTRUCTION INDUSTRY FEDERATION SOCIAL DISTANCING

PRODUCT CODE: 25652

SIZES AVAILABLE: 600 x 600mm, 800 x 800mm, 1200 x 1200mm

MATERIAL TYPES: Corriboard, Foamex PVC, Dibond or Poster Paper



CONSTRUCTION INDUSTRY FEDERATION FOLLOW THE PLAN

PRODUCT CODE: 25653

SIZES AVAILABLE: 600 x 400mm, 800 x 600mm, 1200 x 800mm, 1800 x 1200mm, 2400 x 1200mm

MATERIAL TYPES: Corriboard, Foamex PVC, Dibond or Poster Paper

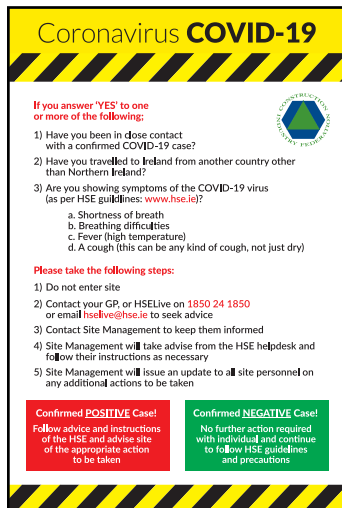


SOAP KILLS COVID-19

PRODUCT CODE: 25662

SIZES AVAILABLE: 400 x 600mm, 600 x 800mm, 800 x 1200mm

MATERIAL TYPES: Corriboard, Foamex PVC, Dibond or Poster Paper



CIF SITE AWARENESS

PRODUCT CODE: 25694

SIZES AVAILABLE: 400 x 600mm, 600 x 800mm, 800 x 1200mm

MATERIAL TYPES: Corriboard, Foamex, PVC, Dibond or Poster Paper



DRIVERS STAY IN YOUR VEHICLE

PRODUCT CODE: 25695

SIZES AVAILABLE: 400 x 600mm, 600 x 800mm, 800 x 1200mm

MATERIAL TYPES: Corriboard, Foamex, PVC, Dibond or Poster Paper



DO NOT SHARE CLEAN REGULARLY STICKER

PRODUCT CODE: 25690

SIZES AVAILABLE: 150 x 100mm, 300 x 200mm

MATERIAL TYPES: Adhesive Vinyl

PRINTING: Digitally printed full colour in high resolution, Finish: Matte or Gloss



DO NOT SWITCH DRIVERS STICKER

PRODUCT CODE: 25689

SIZES AVAILABLE: 150 x 100mm, 300 x 200mm

MATERIAL TYPES: Adhesive Vinyl

PRINTING: Digitally printed full colour in high resolution, Finish: Matte or Gloss

Construction Personal Safety **Equipment**





SOCIAL DISTANCING HELMET LABELS

PRODUCT CODE: 25710

SIZES AVAILABLE: 60mm

MATERIAL TYPES: Adhesive Vinyl

PRINTING: Digitally printed full colour in high resolution, Finish: Matte or Gloss,

FINISH: Matte or Gloss, Lamination for added protection (if required): Matte or Gloss

SUPPLIED: Sheet or roll format (dependent on quantity)



DO NOT SHAKE HANDS HELMET LABELS

PRODUCT CODE: 25711

SIZES AVAILABLE: 60mm

MATERIAL TYPES: Adhesive Vinyl

PRINTING: Digitally printed full colour in high resolution, Finish: Matte or Gloss,

FINISH: Matte or Gloss, Lamination for added protection (if required): Matte or Gloss

SUPPLIED: Sheet or roll format (dependent on quantity)



SOCIAL DISTANCING BADGE

PRODUCT CODE: 25712

SIZES AVAILABLE: (Insert size) 91mm x 75 mm, (Outer size) 97mm x 81 mm

MATERIAL TYPES: Lanyard with Double Sided Social Distancing Badge in plastic pouch. Please note: Lanyard colour may vary and all signs are available in this format. Please specify when ordering.

PRINTING: Digitally printed full colour in high resolution



SOCIAL DISTANCING HI-VIS VEST

PRODUCT CODE: 25714

SIZES AVAILABLE: Medium, Large, Extra large

COLOUR: Yellow, Green

Construction Safety **Signs**



**CORONAVIRUS DO NOT TOUCH**

PRODUCT CODE: 25721

SIZES AVAILABLE: **Portrait:** 300 x 400mm, 400 x 600mm, 600 x 800mm
Landscape: 600 x 400mm, 800 x 600mm, 1200 x 800mm
Square: 600 x 600mm, 800 x 800mm, 1200 x 1200mm

MATERIAL: Corriboard

**CORONAVIRUS CONSTRUCTION PERSONNEL ONLY**

PRODUCT CODE: 25722

SIZES AVAILABLE: **Portrait:** 300 x 400mm, 400 x 600mm, 600 x 800mm
Landscape: 600 x 400mm, 800 x 600mm, 1200 x 800mm
Square: 600 x 600mm, 800 x 800mm, 1200 x 1200mm

MATERIAL: Corriboard

**CORONAVIRUS UNAUTHORISED ENTRY PROHIBITED**

PRODUCT CODE: 25724

SIZES AVAILABLE: **Portrait:** 300 x 400mm, 400 x 600mm, 600 x 800mm
Landscape: 600 x 400mm, 800 x 600mm, 1200 x 800mm
Square: 600 x 600mm, 800 x 800mm, 1200 x 1200mm

MATERIAL: Corriboard

**CORONAVIRUS NO ENTRY**

PRODUCT CODE: 25725

SIZES AVAILABLE:

Portrait: 300 x 400mm, 400 x 600mm, 600 x 800mm**Landscape:** 600 x 400mm, 800 x 600mm, 1200 x 800mm**Square:** 600 x 600mm, 800 x 800mm, 1200 x 1200mm

MATERIAL:

Corriboard

**CORONAVIRUS HAND SANITISER STATION**

PRODUCT CODE: 25728

SIZES AVAILABLE:

Portrait: 300 x 400mm, 400 x 600mm, 600 x 800mm**Landscape:** 600 x 400mm, 800 x 600mm, 1200 x 800mm**Square:** 600 x 600mm, 800 x 800mm, 1200 x 1200mm

MATERIAL:

Corriboard

**COVID-19 WASH YOUR HANDS WELL**

PRODUCT CODE: 25729

SIZES AVAILABLE:

Portrait: 300 x 400mm, 400 x 600mm, 600 x 800mm**Landscape:** 600 x 400mm, 800 x 600mm, 1200 x 800mm**Square:** 600 x 600mm, 800 x 800mm, 1200 x 1200mm

MATERIAL:

Corriboard



**COVID-19 CLEAN AND DISINFECT FREQUENTLY**

PRODUCT CODE: 25730

SIZES AVAILABLE: **Portrait:** 300 x 400mm, 400 x 600mm, 600 x 800mm
Landscape: 600 x 400mm, 800 x 600mm, 1200 x 800mm
Square: 600 x 600mm, 800 x 800mm, 1200 x 1200mm

MATERIAL: Corriboard

**COVID-19 UNWASHED HANDS**

PRODUCT CODE: 25731

SIZES AVAILABLE: **Portrait:** 300 x 400mm, 400 x 600mm, 600 x 800mm
Landscape: 600 x 400mm, 800 x 600mm, 1200 x 800mm
Square: 600 x 600mm, 800 x 800mm, 1200 x 1200mm

MATERIAL: Corriboard

**COVID-19 OBSERVE SAFETY PRECAUTIONS**

PRODUCT CODE: 25732

SIZES AVAILABLE: **Portrait:** 300 x 400mm, 400 x 600mm, 600 x 800mm
Landscape: 600 x 400mm, 800 x 600mm, 1200 x 800mm
Square: 600 x 600mm, 800 x 800mm, 1200 x 1200mm

MATERIAL: Corriboard



CORONAVIRUS COVER YOUR MOUTH

PRODUCT CODE: 25733

SIZES AVAILABLE: **Portrait:** 300 x 400mm, 400 x 600mm, 600 x 800mm
Landscape: 600 x 400mm, 800 x 600mm, 1200 x 800mm
Square: 600 x 600mm, 800 x 800mm, 1200 x 1200mm

MATERIAL: Corriboard



COVID-19 WEAR PROTECTIVE GLOVES

PRODUCT CODE: 25734

SIZES AVAILABLE: **Portrait:** 300 x 400mm, 400 x 600mm, 600 x 800mm
Landscape: 600 x 400mm, 800 x 600mm, 1200 x 800mm
Square: 600 x 600mm, 800 x 800mm, 1200 x 1200mm

MATERIAL: Corriboard



COVID-19 WEAR PROTECTIVE CLOTHING

PRODUCT CODE: 25735

SIZES AVAILABLE: **Portrait:** 300 x 400mm, 400 x 600mm, 600 x 800mm
Landscape: 600 x 400mm, 800 x 600mm, 1200 x 800mm
Square: 600 x 600mm, 800 x 800mm, 1200 x 1200mm

MATERIAL: Corriboard

**COVID-19 WEAR FACE MASK**

PRODUCT CODE: 25737

SIZES AVAILABLE: **Portrait:** 300 x 400mm, 400 x 600mm, 600 x 800mm
Landscape: 600 x 400mm, 800 x 600mm, 1200 x 800mm
Square: 600 x 600mm, 800 x 800mm, 1200 x 1200mm

MATERIAL: Corriboard

**COVID-19 NO ACCESS**

PRODUCT CODE: 25736

SIZES AVAILABLE: **Portrait:** 300 x 400mm, 400 x 600mm, 600 x 800mm
Landscape: 600 x 400mm, 800 x 600mm, 1200 x 800mm
Square: 600 x 600mm, 800 x 800mm, 1200 x 1200mm

MATERIAL: Corriboard

**COVID-19 MAX PERSONS PERMITTED WORK**

PRODUCT CODE: 25738

SIZES AVAILABLE: **Portrait:** 300 x 400mm, 400 x 600mm, 600 x 800mm
Landscape: 600 x 400mm, 800 x 600mm, 1200 x 800mm
Square: 600 x 600mm, 800 x 800mm, 1200 x 1200mm

MATERIAL: Corriboard



COVID-19 PERSONS PERMITTED IN THE CANTEEN

PRODUCT CODE: 25740

SIZES AVAILABLE: **Portrait:** 300 x 400mm, 400 x 600mm, 600 x 800mm
Landscape: 600 x 400mm, 800 x 600mm, 1200 x 800mm
Square: 600 x 600mm, 800 x 800mm, 1200 x 1200mm

MATERIAL: Corriboard



CORONAVIRUS PROTECT EACH OTHER WORK APART

PRODUCT CODE: 25727

SIZES AVAILABLE: **Square:** 600 x 600mm, 800 x 800mm, 1200 x 1200mm

MATERIAL: Corriboard



COVID-19 WASH HANDS CANTEEN FACILITIES

PRODUCT CODE: 25742

SIZES AVAILABLE: **Portrait:** 300 x 400mm, 400 x 600mm, 600 x 800mm
Landscape: 600 x 400mm, 800 x 600mm, 1200 x 800mm
Square: 600 x 600mm, 800 x 800mm, 1200 x 1200mm

MATERIAL: Corriboard



COVID-19 WASH HANDS AFTER WORKING IN THIS AREA

PRODUCT CODE: 25743

SIZES AVAILABLE: **Portrait:** 300 x 400mm, 400 x 600mm, 600 x 800mm
Landscape: 600 x 400mm, 800 x 600mm, 1200 x 800mm
Square: 600 x 600mm, 800 x 800mm, 1200 x 1200mm

MATERIAL: Corriboard



COVID-19 WASH YOUR HANDS BEFORE COMMENCING WORK

PRODUCT CODE: 25744

SIZES AVAILABLE: **Portrait:** 300 x 400mm, 400 x 600mm, 600 x 800mm
Landscape: 600 x 400mm, 800 x 600mm, 1200 x 800mm
Square: 600 x 600mm, 800 x 800mm, 1200 x 1200mm

MATERIAL: Corriboard



COVID-19 ALL SITE PERSONNEL MUST HAVE C19 DIGITAL CARD

PRODUCT CODE: 25745

SIZES AVAILABLE: **Portrait:** 300 x 400mm, 400 x 600mm, 600 x 800mm
Landscape: 600 x 400mm, 800 x 600mm, 1200 x 800mm
Square: 600 x 600mm, 800 x 800mm, 1200 x 1200mm

MATERIAL: Corriboard



SHOW SECURITY PERSONNEL YOUR C19 DIGITAL CARD ON ARRIVAL

PRODUCT CODE: 25746

SIZES AVAILABLE: **Portrait:** 300 x 400mm, 400 x 600mm, 600 x 800mm
Landscape: 600 x 400mm, 800 x 600mm, 1200 x 800mm
Square: 600 x 600mm, 800 x 800mm, 1200 x 1200mm

MATERIAL: Corriboard

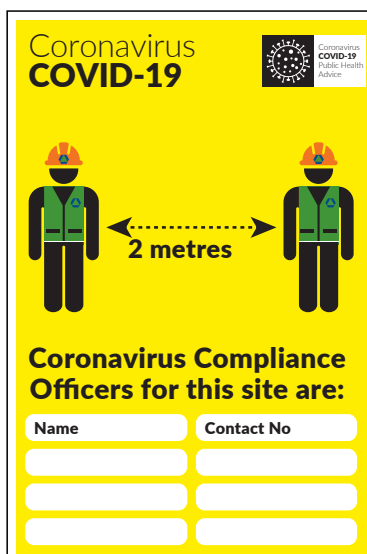


COVID-19 HAVE YOU WASHED YOUR HANDS WITH HOT WATER

PRODUCT CODE: 25747

SIZES AVAILABLE: **Portrait:** 300 x 400mm, 400 x 600mm, 600 x 800mm
Landscape: 600 x 400mm, 800 x 600mm, 1200 x 800mm
Square: 600 x 600mm, 800 x 800mm, 1200 x 1200mm

MATERIAL: Corriboard

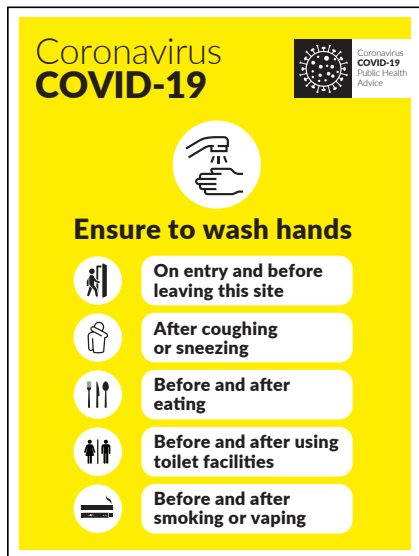


CORONAVIRUS COMPLIANCE OFFICER

PRODUCT CODE: 25753

SIZES AVAILABLE: **Portrait:** 300 x 400mm, 400 x 600mm, 600 x 800mm
Landscape: 600 x 400mm, 800 x 600mm, 1200 x 800mm
Square: 600 x 600mm, 800 x 800mm, 1200 x 1200mm

MATERIAL: Corriboard



WASH YOUR HANDS MULTI NOTICE

PRODUCT CODE: 25754

SIZES AVAILABLE: **Portrait:** 300 x 400mm, 400 x 600mm, 600 x 800mm
Landscape: 600 x 400mm, 800 x 600mm, 1200 x 800mm
Square: 600 x 600mm, 800 x 800mm, 1200 x 1200mm

MATERIAL: Corriboard



ENSURE TO CARRY HAND SANITISER AT ALL TIMES

PRODUCT CODE: 25755

SIZES AVAILABLE: **Portrait:** 300 x 400mm, 400 x 600mm, 600 x 800mm
Landscape: 600 x 400mm, 800 x 600mm, 1200 x 800mm
Square: 600 x 600mm, 800 x 800mm, 1200 x 1200mm

MATERIAL: Corriboard



HAND SANITISER MUST BE CARRIED AT ALL TIMES AND USED WHEN WORKING IN THIS AREA

PRODUCT CODE: 25756

SIZES AVAILABLE: **Portrait:** 300 x 400mm, 400 x 600mm, 600 x 800mm
Landscape: 600 x 400mm, 800 x 600mm, 1200 x 800mm
Square: 600 x 600mm, 800 x 800mm, 1200 x 1200mm

MATERIAL: Corriboard



SANITISE ALL TOUCH POINTS AFTER TASK IS COMPLETED

PRODUCT CODE: 25757

SIZES AVAILABLE: **Portrait:** 300 x 400mm, 400 x 600mm, 600 x 800mm
Landscape: 600 x 400mm, 800 x 600mm, 1200 x 800mm
Square: 600 x 600mm, 800 x 800mm, 1200 x 1200mm

MATERIAL: Corriboard

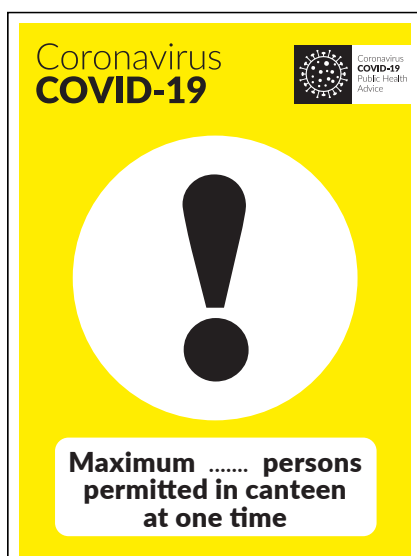


COVID-19 HAND WASH STATION

PRODUCT CODE: 25758

SIZES AVAILABLE: **Portrait:** 300 x 400mm, 400 x 600mm, 600 x 800mm
Landscape: 600 x 400mm, 800 x 600mm, 1200 x 800mm
Square: 600 x 600mm, 800 x 800mm, 1200 x 1200mm

MATERIAL: Corriboard

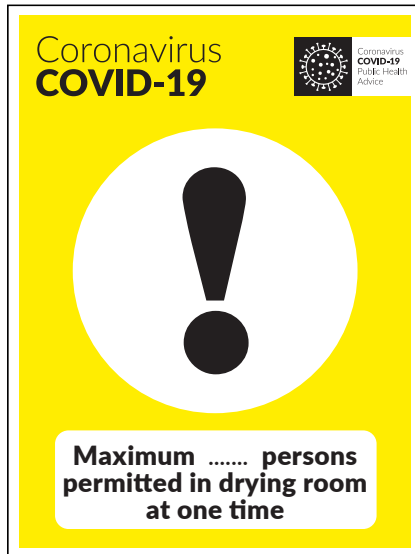


MAXIMUM PERSONS PERMITTED IN CANTEEN AT ONE TIME

PRODUCT CODE: 25759

SIZES AVAILABLE: **Portrait:** 300 x 400mm, 400 x 600mm, 600 x 800mm
Landscape: 600 x 400mm, 800 x 600mm, 1200 x 800mm
Square: 600 x 600mm, 800 x 800mm, 1200 x 1200mm

MATERIAL: Corriboard

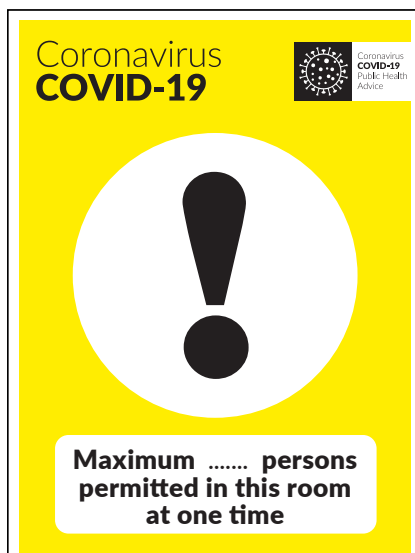


MAXIMUM PERSONS PERMITTED IN DRYING ROOM AT ONE TIME

PRODUCT CODE: 25760

SIZES AVAILABLE: **Portrait:** 300 x 400mm, 400 x 600mm, 600 x 800mm
Landscape: 600 x 400mm, 800 x 600mm, 1200 x 800mm
Square: 600 x 600mm, 800 x 800mm, 1200 x 1200mm

MATERIAL: Corriboard

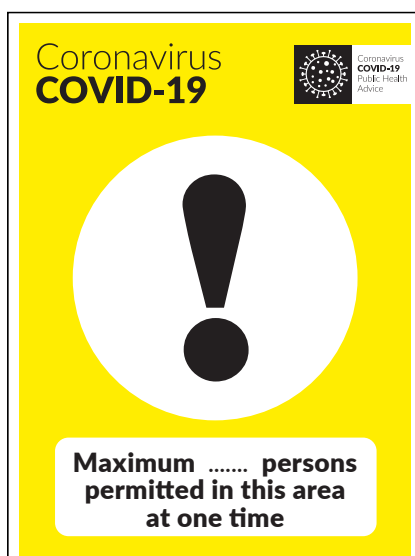


MAXIMUM PERSONS PERMITTED IN THIS ROOM AT ONE TIME

PRODUCT CODE: 25761

SIZES AVAILABLE: **Portrait:** 300 x 400mm, 400 x 600mm, 600 x 800mm
Landscape: 600 x 400mm, 800 x 600mm, 1200 x 800mm
Square: 600 x 600mm, 800 x 800mm, 1200 x 1200mm

MATERIAL: Corriboard

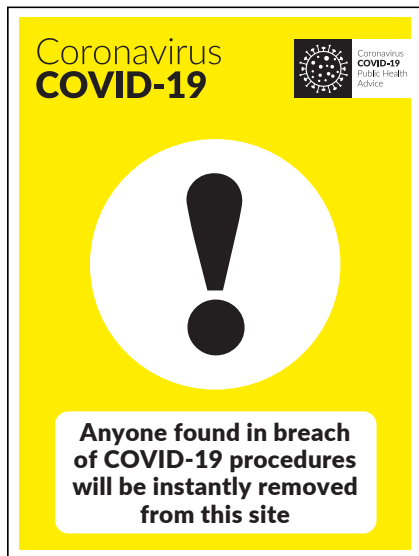


MAXIMUM PERSONS PERMITTED IN THIS AREA AT ONE TIME

PRODUCT CODE: 25762

SIZES AVAILABLE: **Portrait:** 300 x 400mm, 400 x 600mm, 600 x 800mm
Landscape: 600 x 400mm, 800 x 600mm, 1200 x 800mm
Square: 600 x 600mm, 800 x 800mm, 1200 x 1200mm

MATERIAL: Corriboard



ANYONE FOUND IN BREACH OF COVID-19 PROCEDURES WILL BE INSTANTLY REMOVED FROM THIS SITE

PRODUCT CODE: 25763

SIZES AVAILABLE: **Portrait:** 300 x 400mm, 400 x 600mm, 600 x 800mm
Landscape: 600 x 400mm, 800 x 600mm, 1200 x 800mm
Square: 600 x 600mm, 800 x 800mm, 1200 x 1200mm

MATERIAL: Corriboard



GLOVES MASKS AND FACE SHIELDS MUST BE WORN IN THIS AREA

PRODUCT CODE: 25764

SIZES AVAILABLE: **Portrait:** 300 x 400mm, 400 x 600mm, 600 x 800mm
Landscape: 600 x 400mm, 800 x 600mm, 1200 x 800mm
Square: 600 x 600mm, 800 x 800mm, 1200 x 1200mm

MATERIAL: Corriboard



COVID-19 DO NOT ENTER THIS SITE IF FEELING UNWELL

PRODUCT CODE: 25765

SIZES AVAILABLE: **Portrait:** 300 x 400mm, 400 x 600mm, 600 x 800mm
Landscape: 600 x 400mm, 800 x 600mm, 1200 x 800mm
Square: 600 x 600mm, 800 x 800mm, 1200 x 1200mm

MATERIAL: Corriboard

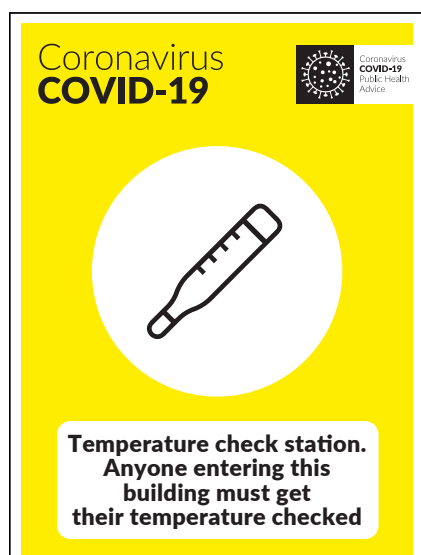


**COVID-19 EXCLUSION ZONE**

PRODUCT CODE: 25766

SIZES AVAILABLE: **Portrait:** 300 x 400mm, 400 x 600mm, 600 x 800mm
Landscape: 600 x 400mm, 800 x 600mm, 1200 x 800mm
Square: 600 x 600mm, 800 x 800mm, 1200 x 1200mm

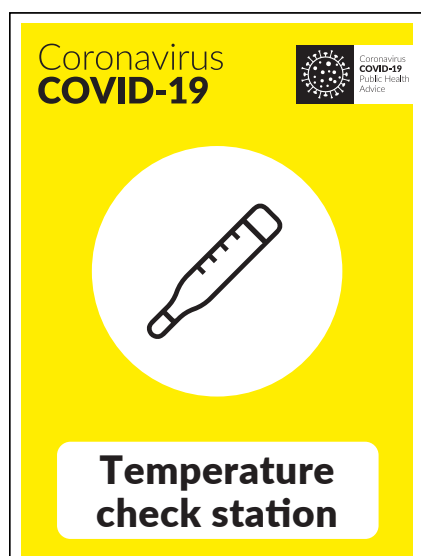
MATERIAL: Corriboard

**COVID-19 TEMPERATURE CHECK STATION**

PRODUCT CODE: 25767

SIZES AVAILABLE: **Portrait:** 300 x 400mm, 400 x 600mm, 600 x 800mm
Landscape: 600 x 400mm, 800 x 600mm, 1200 x 800mm
Square: 600 x 600mm, 800 x 800mm, 1200 x 1200mm

MATERIAL: Corriboard

**CORONAVIRUS TEMPERATURE CHECK ENTERING BUILDING**

PRODUCT CODE: 25768

SIZES AVAILABLE: **Portrait:** 300 x 400mm, 400 x 600mm, 600 x 800mm
Landscape: 600 x 400mm, 800 x 600mm, 1200 x 800mm
Square: 600 x 600mm, 800 x 800mm, 1200 x 1200mm

MATERIAL: Corriboard

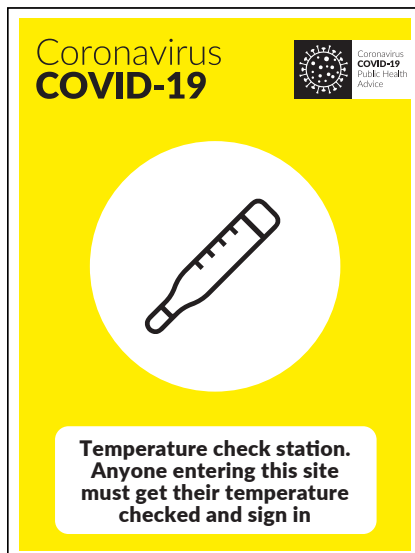


COVID-19 STOP HAVE YOU HAD YOUR TEMPERATURE CHECKED

PRODUCT CODE: 25769

SIZES AVAILABLE: **Portrait:** 300 x 400mm, 400 x 600mm, 600 x 800mm
Landscape: 600 x 400mm, 800 x 600mm, 1200 x 800mm
Square: 600 x 600mm, 800 x 800mm, 1200 x 1200mm

MATERIAL: Corriboard



CORONAVIRUS TEMPERATURE CHECK ENTERING SITE

PRODUCT CODE: 25770

SIZES AVAILABLE: **Portrait:** 300 x 400mm, 400 x 600mm, 600 x 800mm
Landscape: 600 x 400mm, 800 x 600mm, 1200 x 800mm
Square: 600 x 600mm, 800 x 800mm, 1200 x 1200mm

MATERIAL: Corriboard



COVID-19 DELIVERY DRIVER REPORT TO SECURITY ON ARRIVAL

PRODUCT CODE: 25771

SIZES AVAILABLE: **Portrait:** 300 x 400mm, 400 x 600mm, 600 x 800mm
Landscape: 600 x 400mm, 800 x 600mm, 1200 x 800mm
Square: 600 x 600mm, 800 x 800mm, 1200 x 1200mm

MATERIAL: Corriboard



CORONAVIRUS DELIVERY DRIVER DO NOT LEAVE VEHICLE

PRODUCT CODE: 25772

SIZES AVAILABLE: **Portrait:** 300 x 400mm, 400 x 600mm, 600 x 800mm
Landscape: 600 x 400mm, 800 x 600mm, 1200 x 800mm
Square: 600 x 600mm, 800 x 800mm, 1200 x 1200mm

MATERIAL: Corriboard



COVID-19 DISPOSE OF FACE MASKS HERE

PRODUCT CODE: 25773

SIZES AVAILABLE: **Portrait:** 300 x 400mm, 400 x 600mm, 600 x 800mm
Landscape: 600 x 400mm, 800 x 600mm, 1200 x 800mm
Square: 600 x 600mm, 800 x 800mm, 1200 x 1200mm

MATERIAL: Corriboard



COVID-19 DISPOSE OF FACE SHIELDS HERE

PRODUCT CODE: 25774

SIZES AVAILABLE: **Portrait:** 300 x 400mm, 400 x 600mm, 600 x 800mm
Landscape: 600 x 400mm, 800 x 600mm, 1200 x 800mm
Square: 600 x 600mm, 800 x 800mm, 1200 x 1200mm

MATERIAL: Corriboard



COVID-19 DISPOSE OF GLOVES HERE

PRODUCT CODE: 25775

SIZES AVAILABLE: **Portrait:** 300 x 400mm, 400 x 600mm, 600 x 800mm
Landscape: 600 x 400mm, 800 x 600mm, 1200 x 800mm
Square: 600 x 600mm, 800 x 800mm, 1200 x 1200mm

MATERIAL: Corriboard



COVID-19 FACE MASK STATION

PRODUCT CODE: 25776

SIZES AVAILABLE: **Portrait:** 300 x 400mm, 400 x 600mm, 600 x 800mm
Landscape: 600 x 400mm, 800 x 600mm, 1200 x 800mm
Square: 600 x 600mm, 800 x 800mm, 1200 x 1200mm

MATERIAL: Corriboard



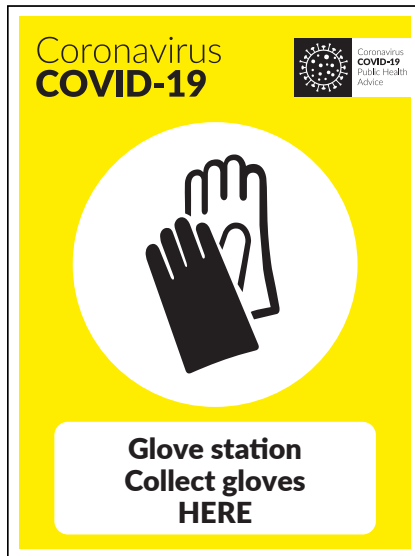
COVID-19 FACE SHIELD STATION

PRODUCT CODE: 25777

SIZES AVAILABLE: **Portrait:** 300 x 400mm, 400 x 600mm, 600 x 800mm
Landscape: 600 x 400mm, 800 x 600mm, 1200 x 800mm
Square: 600 x 600mm, 800 x 800mm, 1200 x 1200mm

MATERIAL: Corriboard



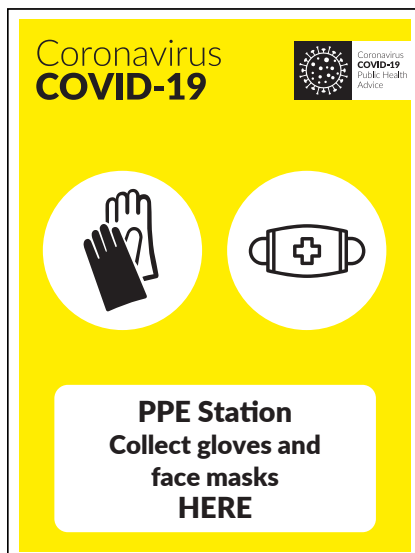


COVID-19 GLOVE STATION

PRODUCT CODE: 25778

SIZES AVAILABLE: **Portrait:** 300 x 400mm, 400 x 600mm, 600 x 800mm
Landscape: 600 x 400mm, 800 x 600mm, 1200 x 800mm
Square: 600 x 600mm, 800 x 800mm, 1200 x 1200mm

MATERIAL: Corriboard

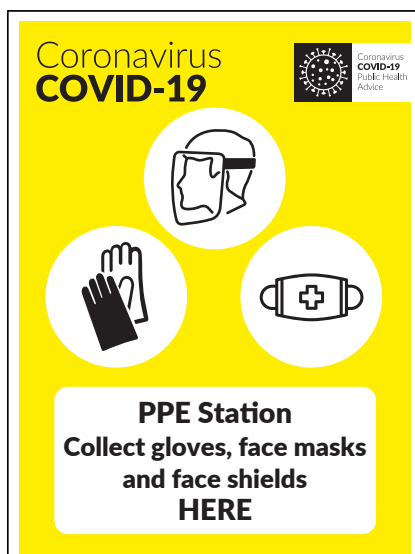


PPE STATION COLLECT GLOVES AND FACE MASKS

PRODUCT CODE: 25779

SIZES AVAILABLE: **Portrait:** 300 x 400mm, 400 x 600mm, 600 x 800mm
Landscape: 600 x 400mm, 800 x 600mm, 1200 x 800mm
Square: 600 x 600mm, 800 x 800mm, 1200 x 1200mm

MATERIAL: Corriboard



PPE STATION COLLECT GLOVES FACE MASKS AND FACE SHIELDS

PRODUCT CODE: 25780

SIZES AVAILABLE: **Portrait:** 300 x 400mm, 400 x 600mm, 600 x 800mm
Landscape: 600 x 400mm, 800 x 600mm, 1200 x 800mm
Square: 600 x 600mm, 800 x 800mm, 1200 x 1200mm

MATERIAL: Corriboard

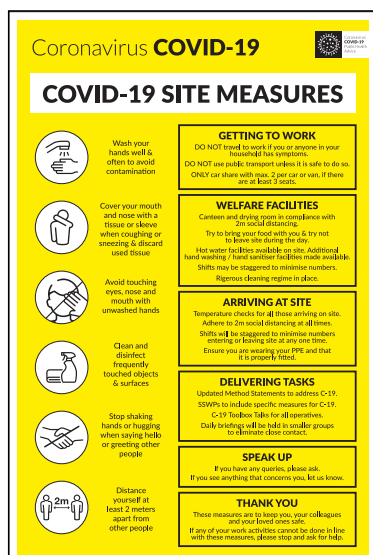


COVID-19 USE PEDESTRIAN WALKWAY ONE WAY SYSTEM

PRODUCT CODE: 25795

SIZES AVAILABLE: **Portrait:** 300 x 400mm, 400 x 600mm, 600 x 800mm
Landscape: 600 x 400mm, 800 x 600mm, 1200 x 800mm
Square: 600 x 600mm, 800 x 800mm, 1200 x 1200mm

MATERIAL: Corriboard

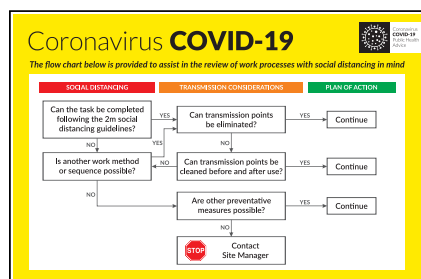


COVID-19 SITE MEASURES

PRODUCT CODE: 25781

SIZES AVAILABLE: **Portrait:** 300 x 400mm, 400 x 600mm, 600 x 800mm
Landscape: 600 x 400mm, 800 x 600mm, 1200 x 800mm
Square: 600 x 600mm, 800 x 800mm, 1200 x 1200mm

MATERIAL: Corriboard

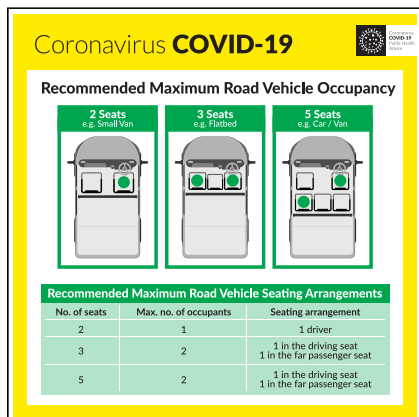


COVID-19 FLOW CHART

PRODUCT CODE: 25783

SIZES AVAILABLE: **Landscape:** 600 x 400mm, 800 x 600mm, 1200 x 800mm

MATERIAL: Corriboard



COVID-19 RECOMMENDED MAX ROAD VEHICLE OCCUPANCY

PRODUCT CODE: 25784

SIZES AVAILABLE: **Square:** 600 x 600mm, 800 x 800mm, 1200 x 1200mm

MATERIAL: Corriboard



COVID-19 ISOLATION OFFICE

PRODUCT CODE: 25834

SIZES AVAILABLE: A4, A3, A2, A1, A0

MATERIAL: Corriboard, Foamex, Solid PVC, Sticker or Poster Paper



General Safety Signs

WASH YOUR HANDS

Protect yourself and others from getting COVID-19

**AFTER COUGHING
OR SNEEZING**

**BEFORE, DURING AND AFTER
YOU PREPARE FOOD**

BEFORE EATING

**WHEN HANDS ARE
VISIBLY DIRTY**

AVOID SHAKING HANDS



USE SOAP



PALM TO PALM



FINGERS
INTERLACED



BASE
OF THUMBS



WRISTS



DRY
HANDS

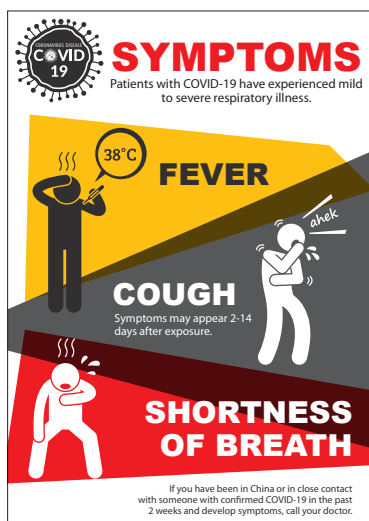


PREVENT THE SPREAD OF COVID-19

PRODUCT CODE: 25599

SIZES AVAILABLE: 200 x 300mm, 300 x 400mm, 400 x 600mm, 600 x 800mm & 800 x 1200mm

MATERIAL TYPES: Corriboard, Foamex PVC, Dibond or Poster Paper



COVID-19 SYMPTOMS

PRODUCT CODE: 25604

SIZES AVAILABLE: 200 x 300mm, 300 x 400mm, 400 x 600mm, 600 x 800mm and 800 x 1200mm

MATERIAL TYPES: Corriboard, Foamex PVC, Dibond or Poster Paper

WASH YOUR HANDS

Protect yourself and others from getting COVID-19

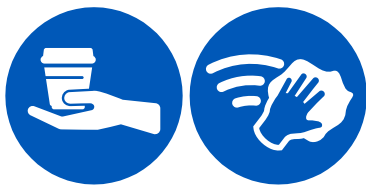


WASH YOUR HANDS COVID-19

PRODUCT CODE: 25605

SIZES AVAILABLE: 200 x 300mm, 300 x 400mm, 400 x 600mm, 600 x 800mm and 800 x 1200mm

MATERIAL TYPES: Corriboard, Foamex PVC, Dibond, Poster Paper & Self Adhesive



**Please use
your own cup
and thoroughly
wash and dry
canteen utensils
after each use**

PLEASE USE YOUR OWN CUP & THOROUGHLY WASH & DRY CANTEEN UTENSILS

PRODUCT CODE: 25617

SIZES AVAILABLE: 200 x 300mm, 300 x 400mm

MATERIAL TYPES: Corriboard, Foamex PVC, Poster Paper & Self Adhesive



**Please wash
your hands
before and
after eating
and wipe down
the countertop
when finished**

PLEASE WASH YOUR HANDS BEFORE & AFTER EATING & WIPE DOWN THE COUNTERTOP WHEN FINISHED

PRODUCT CODE: 25615

SIZES AVAILABLE: 200 x 300mm, 300 x 400mm

MATERIAL TYPES: Corriboard, Foamex PVC, Poster Paper & Self Adhesive



**Now wash
your hands**

NOW WASH YOUR HANDS

PRODUCT CODE: CSSC2

SIZES AVAILABLE: 200 x 300mm, 300 x 400mm

MATERIAL TYPES: Corriboard, Foamex PVC, Poster Paper & Self Adhesive



**Instant hand
sanitiser
Use between
hand washing**

INSTANT HAND SANITISER USE BETWEEN HAND WASHING MANDATORY

PRODUCT CODE: HHSA58

SIZES AVAILABLE: 200 x 300mm, 300 x 400mm

MATERIAL TYPES: Corriboard, Foamex PVC, Poster Paper & Self Adhesive



**Please bring in
your own
food utensils
and wash/dry
after use**

PLEASE BRING IN YOUR OWN FOOD UTENSILS AND WASH DRY AFTER USE

PRODUCT CODE: 25613

SIZES AVAILABLE: 200 x 300mm, 300 x 400mm

MATERIAL TYPES: Corriboard, Foamex PVC, Poster Paper & Self Adhesive



**Help prevent the
spread of flu and
other viruses**



Catch it

Cover your nose and mouth
with a clean tissue when you
cough or sneeze



Bin it

Dispose of used tissues
in your nearest bin as soon
as possible



Kill it

Washing your hands
immediately and cleaning
surfaces, helps prevent
the spread of germs

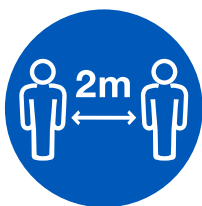
CATCH IT BIN IT KILL IT

PRODUCT CODE: 25643

SIZES AVAILABLE: 200 x 300mm, 300 x 400mm, 400 x 600mm

MATERIAL TYPES: Corriboard, Foamex PVC, Poster Paper & Self Adhesive



**Social Distancing**

To protect yourself
and our staff we are only
allowing one customer in
at a time.

Please wait outside until
the person before you
has left, try to maintain
a distance of 2 metres
between you and others.

KEEP YOUR SOCIAL DISTANCING

PRODUCT CODE: 25644

SIZES AVAILABLE: 200 x 300mm, 300 x 400mm, 400 x 600mm

MATERIAL TYPES: Corriboard, Foamex PVC, Poster Paper & Self Adhesive



WARNING
Biological
hazard

**WARNING BIOLOGICAL HAZARD CHEMICAL
& SUBSTANCE HAZARD**

PRODUCT CODE: IWSJ8

SIZES AVAILABLE: 150 x 200mm, 200 x 300mm, 300 x 400mm, 400 x 600mm

MATERIAL TYPES: Corriboard, Foamex PVC, Poster Paper & Self Adhesive



WARNING
Risk of
infection

**WARNING RISK OF INFECTION CHEMICAL
& SUBSTANCE HAZARD**

PRODUCT CODE: IWSJ7

SIZES AVAILABLE: 150 x 200mm, 200 x 300mm, 300 x 400mm, 400 x 600mm

MATERIAL TYPES: Corriboard, Foamex PVC, Poster Paper & Self Adhesive



WARNING
Biohazard
area

**Wear personal
protective
clothing**

WARNING BIOHAZARD AREA WEAR PERSONAL PROTECTIVE CLOTHING CHEMICAL & SUBSTANCE HAZARD

PRODUCT CODE: IWSJ59

SIZES AVAILABLE: 150 x 200mm, 200 x 300mm, 300 x 400mm, 400 x 600mm

MATERIAL TYPES: Corriboard, Foamex PVC, Poster Paper & Self Adhesive



CAUTION
Quarantine
area

CAUTION QUARANTINE AREA

PRODUCT CODE: 25645

SIZES AVAILABLE: 150 x 200mm, 200 x 300mm, 300 x 400mm, 400 x 600mm

MATERIAL TYPES: Corriboard, Foamex PVC, Poster Paper & Self Adhesive



**Danger of
infection**

DANGER OF INFECTION

PRODUCT CODE: 25646

SIZES AVAILABLE: 150 x 200mm, 200 x 300mm, 300 x 400mm, 400 x 600mm

MATERIAL TYPES: Corriboard, Foamex PVC, Poster Paper & Self Adhesive



**We are
self isolating**



**PLEASE
do not enter**

WE ARE SELF ISOLATING PLEASE DO NOT ENTER

PRODUCT CODE: 25647

SIZES AVAILABLE: 150 x 200mm, 200 x 300mm, 300 x 400mm, 400 x 600mm

MATERIAL TYPES: Corriboard, Foamex PVC, Poster Paper & Self Adhesive



Caution

We have put the following
preventative measures in place
to protect our customers and staff
from contracting COVID-19



Protect yourself and others

To reduce the risk of infection
please use the hand sanitiser
provided before entering
and leaving the building



Follow Social Distancing

Please distance yourself
at least 2 metres (6 feet)
away from other people
at all times



Avoid touching

surfaces and products
unless absolutely necessary

CAUTION PREVENTATIVE MEASURES IN PLACE

PRODUCT CODE: 25648

SIZES AVAILABLE: 150 x 200mm, 200 x 300mm, 300 x 400mm, 400 x 600mm

MATERIAL TYPES: Corriboard, Foamex PVC, Poster Paper & Self Adhesive



**Please do not
enter.
This building
has been closed
for a deep clean**

PLEASE DO NOT ENTER - THIS BUILDING HAS BEEN CLOSED FOR A DEEP CLEAN

PRODUCT CODE: 25649

SIZES AVAILABLE: 150 x 200mm, 200 x 300mm, 300 x 400mm, 400 x 600mm

MATERIAL TYPES: Corriboard, Foamex PVC, Poster Paper & Self Adhesive



**Please do not
shake hands**

PLEASE DO NOT SHAKE HANDS

PRODUCT CODE: 25650

SIZES AVAILABLE: 150 x 200mm, 200 x 300mm, 300 x 400mm, 400 x 600mm

MATERIAL TYPES: Corriboard, Foamex PVC, Poster Paper & Self Adhesive



**Hand
sanitiser
station**

HAND SANITISER STATION

PRODUCT CODE: 25715

SIZES AVAILABLE: 150 x 200mm, 200 x 300mm, 300 x 400mm, 400 x 600mm

MATERIAL TYPES: Corriboard, Foamex PVC, Poster Paper & Self Adhesive

Floor Stickers





CORONAVIRUS CIRCULAR FLOOR STICKER

PRODUCT CODE: 25618

SIZES AVAILABLE: 400mm Diameter

MATERIAL TYPES: Self Adhesive Floor Vinyl with Durable Textured Anti-Slip Laminate

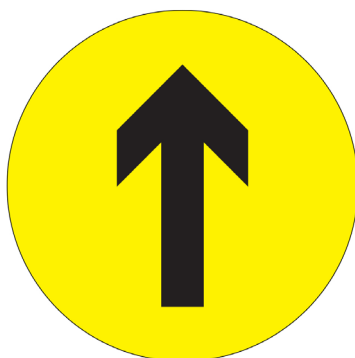


CORONAVIRUS OVAL FLOOR STICKER

PRODUCT CODE: 25666

SIZES AVAILABLE: 450 x 300mm

MATERIAL TYPES: Self Adhesive Floor Vinyl with Durable Textured Anti-Slip Laminate



CORONAVIRUS DIRECTIONAL ARROW FLOOR STICKER

PRODUCT CODE: 25655

SIZES AVAILABLE: 300mm Diameter

MATERIAL TYPES: Self Adhesive Floor Vinyl with Durable Textured Anti-Slip Laminate

**LET'S KEEP OUR SOCIAL DISTANCE FLOOR STICKER**

PRODUCT CODE: 25633

SIZES AVAILABLE: 400 x 400mm

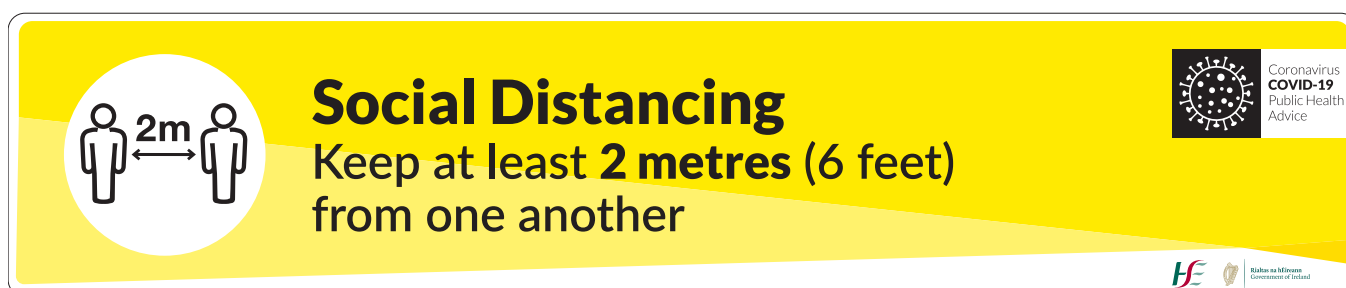
MATERIAL TYPES: Self Adhesive Floor Vinyl with Durable Textured Anti-Slip Laminate

**CORONAVIRUS SOCIAL DISTANCING FLOOR STICKER**

PRODUCT CODE: 25637

SIZES AVAILABLE: 1m x 75mm & 2m x 100mm

MATERIAL TYPES: Self Adhesive Floor Vinyl with Durable Textured Anti-Slip Laminate

**COVID-19 HSE FLOOR STICKER**

PRODUCT CODE: 25654

SIZES AVAILABLE: 1m x 210mm & 2m x 420mm

MATERIAL TYPES: Removable Adhesive Floor Vinyl with Anti-Slip Protective Laminate



Physical Distancing

For your safety please keep **2 metres** (6 feet) from one another in queues



Coronavirus
COVID-19
Public Health
Advice



Riailtas na hÉireann
Government of Ireland

PHYSICAL DISTANCING FLOOR STICKER

PRODUCT CODE: 25677

SIZES AVAILABLE: 1m x 210mm & 2m x 420mm

MATERIAL TYPES: Removable Adhesive Floor Vinyl with Anti-Slip Protective Laminate



PLEASE MAINTAIN 2 METRE DISTANCE FLOOR STICKER

PRODUCT CODE: 25700

SIZES AVAILABLE: 2.4m x 300mm

MATERIAL TYPES: Removable Adhesive Floor Vinyl with Anti-Slip Protective Laminate



2 METRE DISTANCE ARROW FLOOR STICKER

PRODUCT CODE: 25701

SIZES AVAILABLE: 2m x 150mm

MATERIAL TYPES: Removable Adhesive Floor Vinyl with Anti-Slip Protective Laminate





Please Keep Your Distance!



Coronavirus
COVID-19
Public Health
Advice

PLEASE KEEP YOUR DISTANCE FLOOR STICKER

PRODUCT CODE: 25702

SIZES AVAILABLE: 1m x 100mm

MATERIAL TYPES: Removable Adhesive Floor Vinyl with Anti-Slip Protective Laminate



Social Distancing **Floor Tapes**





SOCIAL DISTANCING FLOOR TAPE

PRODUCT CODE: 25699

SIZES AVAILABLE: 48mm x 33m, Roll repeats every 502mm

MATERIAL TYPES: PVC Self Adhesive Base, over laminate with clear BOPP



CHEVRON FLOOR TAPE

PRODUCT CODE: 25750

SIZES AVAILABLE: 48mm x 33m, Roll repeats every 502mm

MATERIAL TYPES: PVC Self Adhesive Base, over laminate with clear BOPP



PLEASE KEEP A SAFE DISTANCE OF 2 METRES FLOOR TAPE

PRODUCT CODE: 25752

SIZES AVAILABLE: 48mm x 33m, Roll repeats every 502mm

MATERIAL TYPES: PVC Self Adhesive Base, over laminate with clear BOPP



PLEASE WAIT ON THIS LINE FLOOR TAPE

PRODUCT CODE: 25751

SIZES AVAILABLE: 48mm x 33m, Roll repeats every 502mm

MATERIAL TYPES: PVC Self Adhesive Base, over laminate with clear BOPP

Social Distancing **Seat Stickers**



**COVID-19 PLEASE LEAVE THIS SEAT FREE**

PRODUCT CODE: 25805

SIZES AVAILABLE: 150 x 150mm

MATERIAL TYPES: Laminated Vinyl Sticker

**COVID-19 PLEASE SIT HERE**

PRODUCT CODE: 25807

SIZES AVAILABLE: 150 x 150mm

MATERIAL TYPES: Laminated Vinyl Sticker

**COVID-19 SEAT OUT OF USE**

PRODUCT CODE: 25806

SIZES AVAILABLE: 150 x 150mm

MATERIAL TYPES: Laminated Vinyl Sticker

**COVID-19 TABLE OUT OF USE**

PRODUCT CODE: 25822

SIZES AVAILABLE: 150 x 150mm

MATERIAL TYPES: Laminated Vinyl Sticker

**COVID-19 PLEASE USE THIS TABLE**

PRODUCT CODE: 25825

SIZES AVAILABLE: 150 x 150mm

MATERIAL TYPES: Laminated Vinyl Sticker

**COVID-19 PLEASE WIPE DOWN TABLE
AND CHAIR AFTER USE**

PRODUCT CODE: 25823

SIZES AVAILABLE: 150 x 150mm

MATERIAL TYPES: Laminated Vinyl Sticker

COVID-19

Hygiene Stations





AUTO HAND SANITISER DISPENSER STRAIGHT STAND

PRODUCT CODE: 25803

SIZES AVAILABLE: Height 1200mm

MATERIAL: Board Thickness 36 mm, Steel Base 330 mm, Automatic Fluid Dispenser (Battery Powered), Attachable PVC Board



PROTECTIVE GLOVES STRAIGHT STAND

PRODUCT CODE: 25804

SIZES AVAILABLE: Height 1200mm

MATERIAL: Board Thickness 36 mm, Steel Base 330 mm, Attachment for Gloves, Attachable PVC Board

Free Standing **Displays**





COVID-19 DESKTOP AWARENESS

PRODUCT CODE: 25611

SIZES AVAILABLE: A4 & A5

MATERIAL TYPES: Strut Card

PLEASE NOTE: All signs are available in this format. Please specify



COVID-19 PORTABLE A BOARD STAND

PRODUCT CODE: 25660

SIZES AVAILABLE: 600 x 800mm & 800 x 1200mm

MATERIAL TYPES: Corriboard

PLEASE NOTE: All signs are available in this format. Please specify



CORONAVIRUS INFORMATION STAND

PRODUCT CODE: 25619

SIZES AVAILABLE: A4

MATERIAL TYPES: Black A4 Frame, Pole Height 830mm - 1500mm

PLEASE NOTE: All signs are available in this format. Please specify



CORONAVIRUS SANDWICH BOARD

PRODUCT CODE: 25634

SIZES AVAILABLE: A1 – 574mm (w) x 821mm (h)
A0 – 821mm (w) x 1169mm (h)

DISPLAY TYPE: Double sided

PLEASE NOTE: All signs are available in this format. Please specify



CORONAVIRUS INFECTION CONTROL ROLL UP BANNER

PRODUCT CODE: 25635

DISPLAY TYPE: Single-sided

MATERIAL TYPES: Scrimless Pet Grey Black, 125 micron in thickness

Venus 850

GRAPHIC DISPLAY SIZE: 850mm (w) x 2050mm (h)

TOTAL DISPLAY SIZE: 850mm (w) x 2200mm (h)

Venus 1200

GRAPHIC DISPLAY SIZE: 1200mm (w) x 2050mm (h)

TOTAL DISPLAY SIZE: 1200mm (w) x 2200mm (h)

Venus 1500

GRAPHIC DISPLAY SIZE: 1500mm (w) x 2050mm (h)

TOTAL DISPLAY SIZE: 1500mm (w) x 2200mm (h)

PLEASE NOTE: All signs are available in this format. Please specify



SOCIAL DISTANCING FORECOURT DISPLAY STAND - THE ICON

PRODUCT CODE: 25651

SIZES AVAILABLE: A1 580mm (w) x 827mm (h)
A0 - 1189 x 841mm
60" x 40" - 1524mm x 1016mm

DISPLAY TYPE: Double sided, Base: Black, water/sand fillable base for extra stability.
Supplied with in-built wheels for ease of movement.

PLEASE NOTE: All signs are available in this format. Please specify





CORONAVIRUS INFECTION CONTROL WEDGE

PRODUCT CODE: 25636

SIZES AVAILABLE: 410mm (w) x 740mm (h)

DISPLAY TYPE: Double sided, Base: Heavy Duty PVC base

PLEASE NOTE: All signs are available in this format. Please specify



PLEASE ENSURE SOCIAL DISTANCING BOLLARD COVERS

PRODUCT CODE: 25627

SIZES AVAILABLE: 200mm x 1000mm & 200mm x 1200mm

MATERIAL TYPES: Corriboard

COVER SHAPE: 3 sided triangular

PLEASE NOTE: All signs are available in this format. Please specify when ordering



SOCIAL DISTANCING WINDMASTER DISPLAY STAND

PRODUCT CODE: 25675

SIZES AVAILABLE: A1 - 1554 x 780 x 500mm
A0 - 1554 x 1010 x 625mm

DISPLAY TYPE: Double sided, weather resistant, wheeled compact moulded hollow base for water or sand weighting and easy to transport

PLEASE NOTE: All signs are available in this format. Please specify

External Use - Painting **Stencils**

QUEUE HERE





CORONAVIRUS SOCIAL DISTANCING CIRCULAR STENCIL

PRODUCT CODE: 25663

SIZES AVAILABLE: 600 x 600mm

MATERIAL TYPES: 3mm Grey Polycraft (Rigid Polystyrene)



CORONAVIRUS SOCIAL DISTANCING HUMAN LINE STENCIL

PRODUCT CODE: 25665

SIZES AVAILABLE: 2440 x 450mm

MATERIAL TYPES: 3mm Grey Polycraft (Rigid Polystyrene)



CORONAVIRUS SOCIAL DISTANCING FACE LINE STENCIL

PRODUCT CODE: 25664

SIZES AVAILABLE: 2440 x 350mm

MATERIAL TYPES: 3mm Grey Polycraft (Rigid Polystyrene)



COVID-19 QUEUE HERE STENCIL

PRODUCT CODE: 25741

SIZES AVAILABLE: 600 x 125mm

MATERIAL TYPES: 3mm Grey Polycraft (Rigid Polystyrene)

**COVID-19 VERTICAL HUMAN LINE STENCIL**

PRODUCT CODE: 25810

SIZES AVAILABLE: 350 x 2440mm

MATERIAL TYPES: 3mm Grey Polycraft (Rigid Polystyrene)

PLEASE KEEP YOUR DISTANCE**COVID-19 PLEASE KEEP YOUR DISTANCE STENCIL**

PRODUCT CODE: 25829

SIZES AVAILABLE: 1200 x 200mm

MATERIAL TYPES: 3mm Grey Polycraft (Rigid Polystyrene)

**COVID-19 PLEASE KEEP YOUR DISTANCE HUMAN ARROW STENCIL**

PRODUCT CODE: 25664

SIZES AVAILABLE: 2440 x 350mm

MATERIAL TYPES: 3mm Grey Polycraft (Rigid Polystyrene)



021 431 1607



sales@pdsigns.ie



www.pdsigns.ie