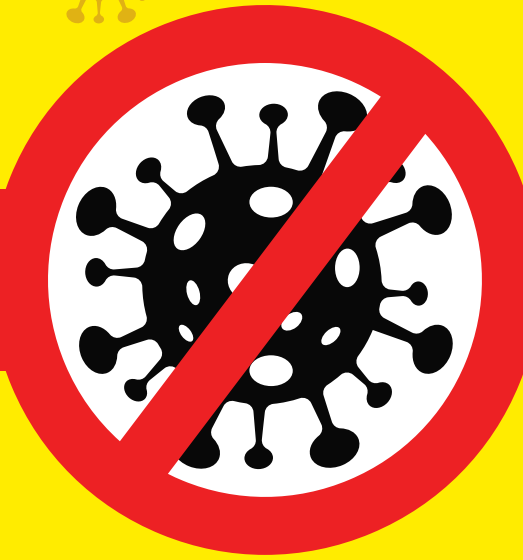


# Coronavirus **COVID-19**



**STOP THE SPREAD**



## **PREVENTATIVE SIGNS**

.....  
See our extensive range of COVID-19 specific  
preventative signs in line with **WHO & ECDC** guidelines  
.....



# Contents

HSE Specific Signs.....	3-24
COVID-19 PPE Signage.....	25-29
CIF Specific Signs.....	30-32
Construction Personal Safety Equipment.....	33-34
Coronavirus Construction Safety Signs.....	35-54
General Safety Signs.....	55-62
Floor Stickers.....	63-67
Social Distancing Floor Tapes.....	68-71
Seat Stickers.....	72-73
Seat Stickers.....	74-76
COVID-19 Hygiene Station.....	77-78
Free Standing Displays.....	79-83
Stencils.....	84-86

# HSE Specific Signs



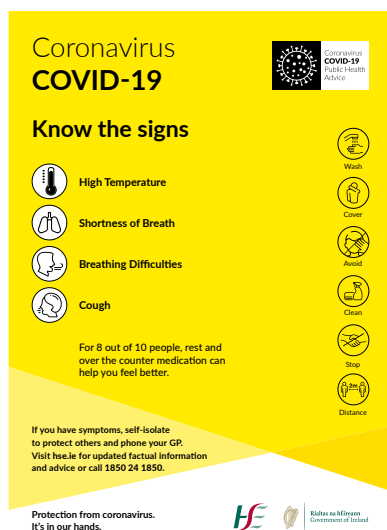


## COVID-19 HSE

PRODUCT CODE: 25602

SIZES AVAILABLE: A4, A3, A2, A1, A0

MATERIAL TYPES: Corriboard, Foamex PVC, Dibond or Poster Paper

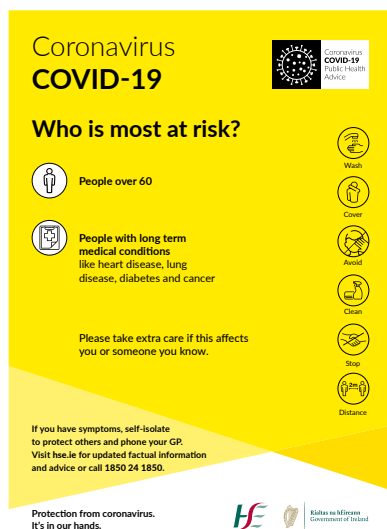


## CORONAVIRUS KNOW THE SYMPTOMS HSE

PRODUCT CODE: 25623

SIZES AVAILABLE: A4, A3, A2, A1, A0

MATERIAL TYPES: Corriboard, Foamex PVC, Dibond or Poster Paper



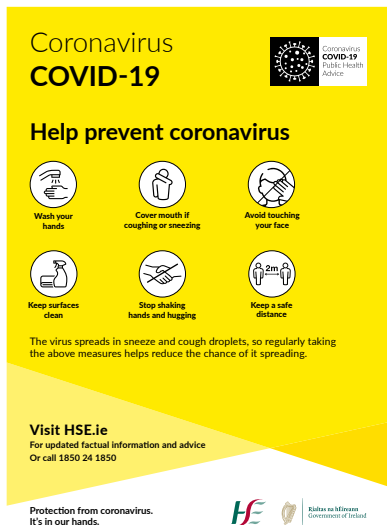
## WHO IS MOST AT RISK CORONAVIRUS HSE

PRODUCT CODE: 25621

SIZES AVAILABLE: A4, A3, A2, A1, A0

MATERIAL TYPES: Corriboard, Foamex PVC, Dibond or Poster Paper





## HELP PREVENT CORONAVIRUS SPREAD HSE

PRODUCT CODE: 25620

SIZES AVAILABLE: A4, A3, A2, A1, A0

MATERIAL TYPES: Corriboard, Foamex PVC, Dibond or Poster Paper



## COVID-19 KIDS HSE

PRODUCT CODE: 25601

SIZES AVAILABLE: A4, A3, A2, A1, A0

MATERIAL TYPES: Corriboard, Foamex PVC, Dibond or Poster Paper



## HAND HYGIENE HSE

PRODUCT CODE: 25606

SIZES AVAILABLE: A4, A3, A2, A1, A0

MATERIAL TYPES: Corriboard, Foamex PVC, Dibond or Poster Paper



**Coronavirus COVID-19**

**Coronavirus COVID-19 Public Health Advice**

**If you have fever and/or cough you should stay at home regardless of your travel or contact history.**

**If you have returned from an area that is subject to travel restrictions due to COVID-19 you should restrict your movement for 14 days.** Check the list of affected areas on [www.dfa.ie](http://www.dfa.ie)

**All People Are Advised To:**

- **Reduce** social interactions
- **Keep a distance** of 2m between you and other people
- **Do not** shake hands or make close contact where possible

If you have symptoms visit [hse.ie](http://hse.ie) or phone HSE Live 1850 24 1850

**Symptoms**

- Fever (High Temperature)
- A Cough
- Shortness of Breath
- Breathing Difficulties

**How to Prevent**

- Stop** shaking hands or hugging when saying hello or greeting other people
- Distance** yourself at least 2 metres (6 feet) away from other people, especially those who might be unwell
- Wash** your hands well and often to avoid contamination
- Cover** your mouth and nose with a tissue or sleeve when coughing or sneezing and discard used tissue
- Avoid** touching eyes, nose, or mouth with unwashed hands
- Clean** and disinfect frequently touched objects and surfaces

**For Daily Updates Visit**  
[www.gov.ie/health-covid-19](http://www.gov.ie/health-covid-19)  
[www.hse.ie](http://www.hse.ie)

Ireland is operating a delay strategy in line with WHO and ECDC advice

HE HSE Riada na hÉireann Government of Ireland

## CORONAVIRUS HSE STAY AT HOME

PRODUCT CODE: 25638

SIZES AVAILABLE: A4, A3, A2, A1, A0

MATERIAL TYPES: Corriboard, Foamex PVC, Dibond or Poster Paper

**Coronavirus COVID-19**

**Coronavirus COVID-19 Public Health Advice**

**If you have fever and/or cough you should stay at home regardless of your travel or contact history.**

If you feel unwell with cough or fever:

- please phone your doctor for medical advice or
- please phone the pharmacy for a supply of your medicines or advice about your medicines.

This helps to protect you, other people and staff visiting the pharmacy today.

**Phone us first**

**Tel:**

**Wash** your hands well with soap and water for at least 20 seconds

**Cover** your mouth and nose with a tissue or sleeve when coughing or sneezing and discard used tissue

**Avoid** touching eyes, nose, or mouth with unwashed hands

**Clean** and disinfect frequently touched objects and surfaces

**Stop** shaking hands or hugging other people

**Distance** yourself at least 2 metres (6 feet) away from other people, especially those who might be unwell

**For more information visit [hse.ie](http://hse.ie) or phone HSELive on 1850 24 1850**

HE HSE Riada na hÉireann Government of Ireland

## COVID-19 PHARMACY DOOR

PRODUCT CODE: 25639

SIZES AVAILABLE: A4, A3

MATERIAL TYPES: Corriboard, Poster Paper or Self Adhesive

**Coronavirus COVID-19**

**Coronavirus COVID-19 Public Health Advice**

If you feel unwell with cough, shortness of breath or fever; **please phone the doctor first for medical advice.**

This helps to protect other people visiting this surgery today.

**Phone us first**

**Tel:**

**Wash** your hands well and often to avoid contamination

**Cover** your mouth and nose with a tissue or sleeve when coughing or sneezing and bin used tissue

**Avoid** touching eyes, nose, or mouth with unwashed hands

**Clean** and disinfect frequently touched objects and surfaces

**For more information visit [hse.ie](http://hse.ie) or phone HSELive on 1850 24 1850**

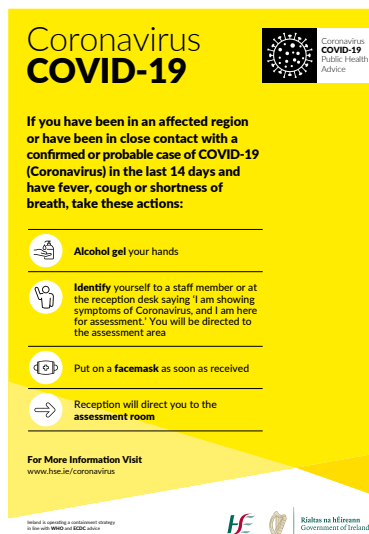
HE HSE Riada na hÉireann Government of Ireland

## GP CORONAVIRUS FRONT DOOR

PRODUCT CODE: 25640

SIZES AVAILABLE: A4, A3

MATERIAL TYPES: Corriboard, Poster Paper or Self Adhesive



## HSE EMERGENCY DEPARTMENT CORONAVIRUS MEASURES

PRODUCT CODE: 25641

SIZES AVAILABLE: A4, A3, A2, A1, A0

MATERIAL TYPES: Corriboard, Foamex PVC, Dibond or Poster Paper



## VISITORS PROTECT YOUR LOVED ONES HSE

PRODUCT CODE: 25642

SIZES AVAILABLE: A4, A3, A2, A1, A0

MATERIAL TYPES: Corriboard, Foamex PVC, Dibond or Poster Paper



## COVER YOUR COUGH & SNEEZE THE RIGHT WAY HSE

PRODUCT CODE: 25600

SIZES AVAILABLE: A4, A3, A2, A1, A0

MATERIAL TYPES: Corriboard, Foamex PVC, Dibond or Poster Paper





## COVID-19 PROTECT EACH OTHER PLAY APART HSE

PRODUCT CODE: 25626

SIZES AVAILABLE: 600 x 600mm, 800 x 800mm & 1200 x 1200mm

MATERIAL TYPES: Corriboard, Foamex PVC, Dibond or Poster Paper



## COVID-19 PROTECT EACH OTHER SHOP APART HSE

PRODUCT CODE: 25628

SIZES AVAILABLE: 600 x 600mm, 800 x 800mm & 1200 x 1200mm

MATERIAL TYPES: Corriboard, Foamex PVC, Dibond or Poster Paper



## COVID-19 PROTECT EACH OTHER SIT APART HSE

PRODUCT CODE: 25631

SIZES AVAILABLE: 600 x 600mm, 800 x 800mm & 1200 x 1200mm

MATERIAL TYPES: Corriboard, Foamex PVC, Dibond or Poster Paper

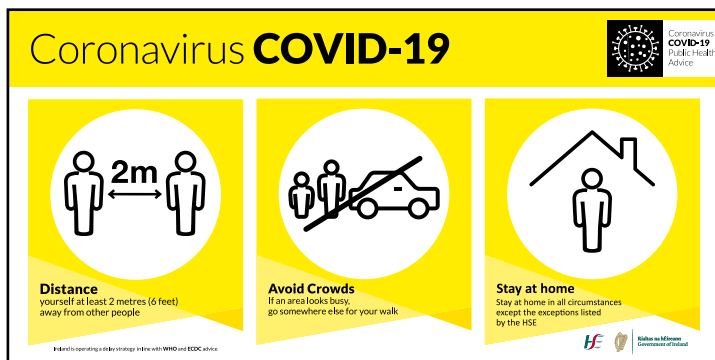


## COVID-19 STAND APART HSE

PRODUCT CODE: 25659

SIZES AVAILABLE: 600 x 600mm, 800 x 800mm & 1200 x 1200mm

MATERIAL TYPES: Corriboard, Foamex PVC, Dibond or Poster Paper



## SOCIAL DISTANCING PREVENTIVE MEASURES

PRODUCT CODE: 25687

SIZES AVAILABLE:

800 x 400mm, 1200 x 600mm,  
1800 x 900mm, 2400 x 1200mm

MATERIAL TYPES:

Corriboard, Foamex, PVC, Dibond or  
Poster Paper



## PLEASE ENSURE SOCIAL DISTANCING

PRODUCT CODE: 25696

SIZES AVAILABLE:

A4, A3, A2, A1, A0

MATERIAL TYPES:

Corriboard, Foamex, Solid PVC, Sticker or Poster Paper



## CORONAVIRUS SHOP APART

PRODUCT CODE: 25697

SIZES AVAILABLE:

A4, A3, A2, A1, A0

MATERIAL TYPES:

Corriboard, Foamex, Solid PVC, Sticker or Poster Paper



## CORONAVIRUS SOCIAL DISTANCING OUTSIDE HSE

PRODUCT CODE: 25625

SIZES AVAILABLE: A4, A3, A2, A1, A0

MATERIAL TYPES: Corriboard, Foamex, Solid PVC, Sticker or Poster Paper



## DISPOSE OF GLOVES RESPONSIBLY

PRODUCT CODE: 25713

SIZES AVAILABLE: A4, A3, A2, A1, A0

MATERIAL TYPES: Corriboard, Foamex, Solid PVC, Sticker or Poster Paper



## COVID-19 CONTACTLESS PAYMENT

PRODUCT CODE: 25708

SIZES AVAILABLE: A4, A3, A2, A1, A0

MATERIAL TYPES: Corriboard, Foamex, Solid PVC, Sticker or Poster Paper



## COVID-19 STORE PROTOCOLS

PRODUCT CODE: 25739

SIZES AVAILABLE: A4, A3, A2, A1, A0

MATERIAL TYPES: Corriboard, Foamex, Solid PVC, Sticker or Poster Paper



## SOCIAL DISTANCING ROOM CAN ONLY ACCOMMODATE PERSONS

PRODUCT CODE: 25748

SIZES AVAILABLE: A4, A3, A2, A1, A0

MATERIAL TYPES: Corriboard, Foamex, Solid PVC, Sticker or Poster Paper



## COVID-19 THERE SHOULD NOT BE MORE THAN PERSONS PER ELEVATOR

PRODUCT CODE: 25749

SIZES AVAILABLE: A4, A3, A2, A1, A0

MATERIAL TYPES: Corriboard, Foamex, Solid PVC, Sticker or Poster Paper



**COVID-19 PLEASE QUEUE HERE**

PRODUCT CODE: 25785

SIZES AVAILABLE: A4, A3, A2, A1, A0

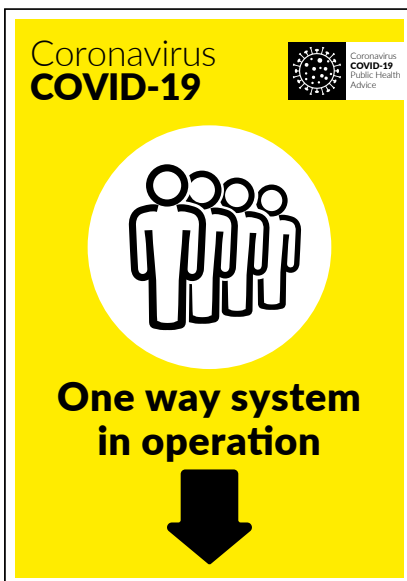
MATERIAL TYPES: Corriboard, Foamex, Solid PVC, Sticker or Poster Paper

**COVID-19 IN-STORE SAFETY INFORMATION**

PRODUCT CODE: 25786

SIZES AVAILABLE: A4, A3, A2, A1, A0

MATERIAL TYPES: Corriboard, Foamex, Solid PVC, Sticker or Poster Paper

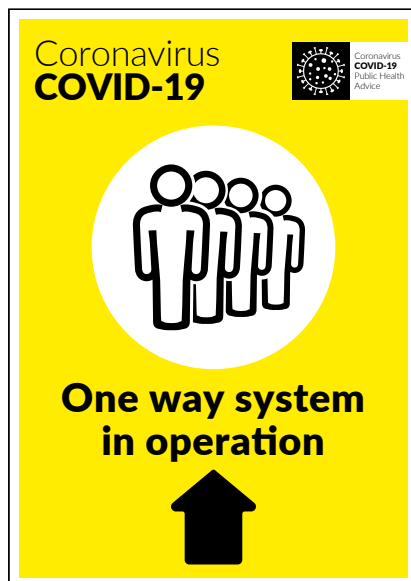
**ONE WAY SYSTEM IN OPERATION ARROW DOWN**

PRODUCT CODE: 25787

SIZES AVAILABLE: A4, A3, A2, A1, A0

MATERIAL TYPES: Corriboard, Foamex, Solid PVC, Sticker or Poster Paper

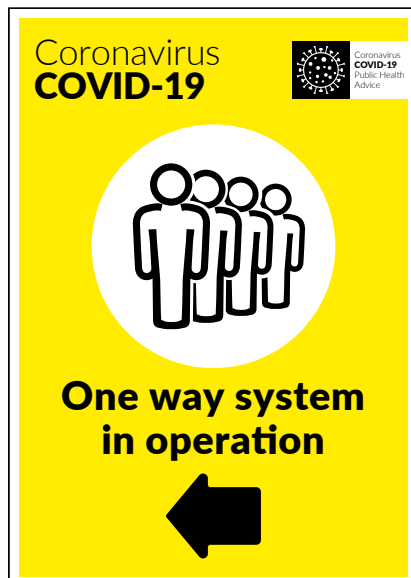


**ONE WAY SYSTEM IN OPERATION ARROW UP**

PRODUCT CODE: 25788

SIZES AVAILABLE: A4, A3, A2, A1, A0

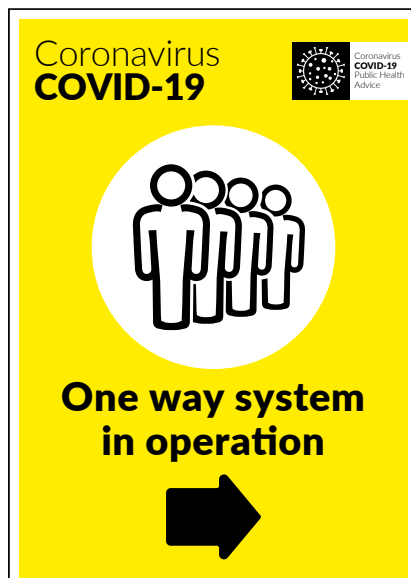
MATERIAL TYPES: Corriboard, Foamex, Solid PVC, Sticker or Poster Paper

**ONE WAY SYSTEM IN OPERATION ARROW LEFT**

PRODUCT CODE: 25789

SIZES AVAILABLE: A4, A3, A2, A1, A0

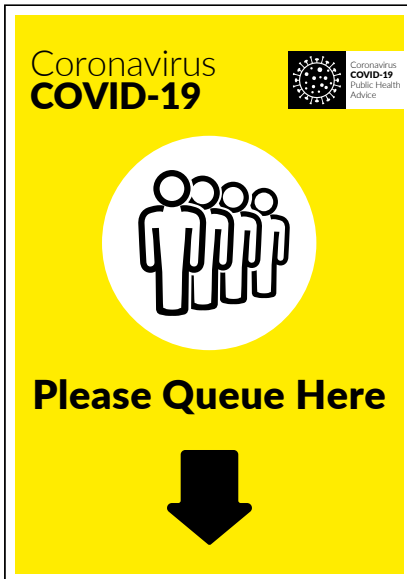
MATERIAL TYPES: Corriboard, Foamex, Solid PVC, Sticker or Poster Paper

**ONE WAY SYSTEM IN OPERATION ARROW RIGHT**

PRODUCT CODE: 25790

SIZES AVAILABLE: A4, A3, A2, A1, A0

MATERIAL TYPES: Corriboard, Foamex, Solid PVC, Sticker or Poster Paper

**COVID-19 PLEASE QUEUE HERE ARROW DOWN**

PRODUCT CODE: 25791

SIZES AVAILABLE: A4, A3, A2, A1, A0

MATERIAL TYPES: Corriboard, Foamex, Solid PVC, Sticker or Poster Paper

**COVID-19 PLEASE QUEUE HERE ARROW UP**

PRODUCT CODE: 25792

SIZES AVAILABLE: A4, A3, A2, A1, A0

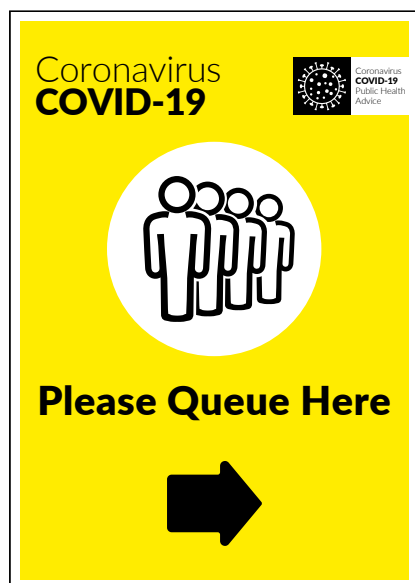
MATERIAL TYPES: Corriboard, Foamex, Solid PVC, Sticker or Poster Paper

**COVID-19 PLEASE QUEUE HERE ARROW LEFT**

PRODUCT CODE: 25793

SIZES AVAILABLE: A4, A3, A2, A1, A0

MATERIAL TYPES: Corriboard, Foamex, Solid PVC, Sticker or Poster Paper

**COVID-19 PLEASE QUEUE HERE ARROW RIGHT**

PRODUCT CODE: 25794

SIZES AVAILABLE: A4, A3, A2, A1, A0

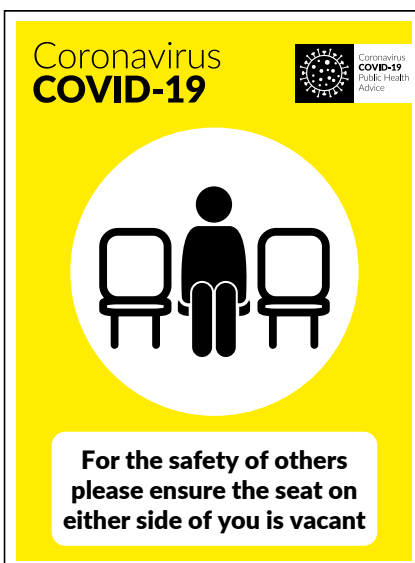
MATERIAL TYPES: Corriboard, Foamex, Solid PVC, Sticker or Poster Paper

**COVID-19 PLEASE SIT HERE**

PRODUCT CODE: 25798

SIZES AVAILABLE: A4, A3, A2, A1, A0

MATERIAL TYPES: Corriboard, Foamex, Solid PVC, Sticker or Poster Paper

**COVID-19 PLEASE ENSURE THE SEAT ON EITHER SIDE IS VACANT**

PRODUCT CODE: 25796

SIZES AVAILABLE: A4, A3, A2, A1, A0

MATERIAL TYPES: Corriboard, Foamex, Solid PVC, Sticker or Poster Paper

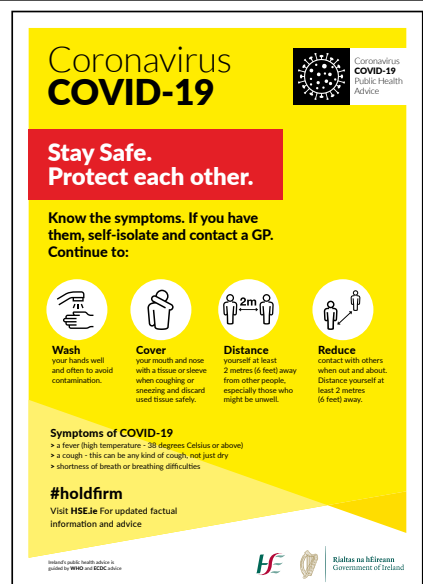


**COVID-19 PLEASE LEAVE THIS SEAT FREE**

PRODUCT CODE: 25799

SIZES AVAILABLE: A4, A3, A2, A1, A0

MATERIAL TYPES: Corriboard, Foamex, Solid PVC, Sticker or Poster Paper

**COVID-19 STAY SAFE PROTECT EACH OTHER**

PRODUCT CODE: 25811

SIZES AVAILABLE: A4, A3, A2, A1, A0

MATERIAL TYPES: Corriboard, Foamex, Solid PVC, Sticker or Poster Paper

**COVID-19 PLEASE ORDER HERE**

PRODUCT CODE: 25812

SIZES AVAILABLE: A4, A3, A2, A1, A0

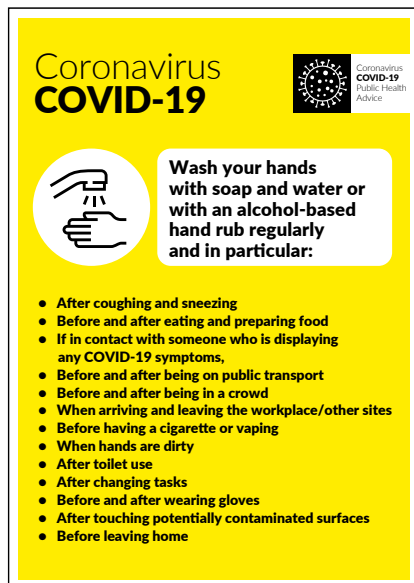
MATERIAL TYPES: Corriboard, Foamex, Solid PVC, Sticker or Poster Paper

**COVID-19 PLEASE PAY HERE**

PRODUCT CODE: 25813

SIZES AVAILABLE: A4, A3, A2, A1, A0

MATERIAL TYPES: Corriboard, Foamex, Solid PVC, Sticker or Poster Paper

**COVID-19 MULTI NOTICE HAND WASH**

PRODUCT CODE: 25814

SIZES AVAILABLE: A4, A3, A2, A1, A0

MATERIAL TYPES: Corriboard, Foamex, Solid PVC, Sticker or Poster Paper

**COVID-19 PROTECT EACH OTHER EXERCISE APART**

PRODUCT CODE: 25815

SIZES AVAILABLE: 600 x 600mm, 800 x 800mm &amp; 1200 x 1200mm

MATERIAL TYPES: Corriboard, Foamex PVC, Dibond or Poster Paper



## Coronavirus COVID-19



Coronavirus  
COVID-19  
Public Health  
Advice



### How to wash your hands with soap and water

1. Wet your hands with warm water and apply soap.
2. Rub your hands together until the soap forms a lather.
3. Rub the top of your hands, between your fingers and under your fingernails.
4. Do this for about 20 seconds.
5. Rinse your hands under running water.
6. Dry your hands with a clean towel or paper towel.

## COVID-19 HOW TO WASH YOUR HANDS

PRODUCT CODE: 25816

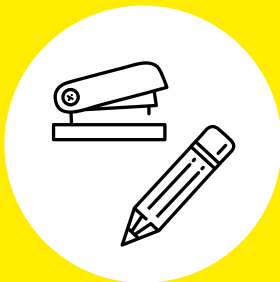
SIZES AVAILABLE: A4, A3, A2, A1, A0

MATERIAL TYPES: Corriboard, Foamex, Solid PVC, Sticker or Poster Paper

## Coronavirus COVID-19



Coronavirus  
COVID-19  
Public Health  
Advice



### Do not share office stationery

## COVID-19 DO NOT SHARE OFFICE STATIONERY

PRODUCT CODE: 25817

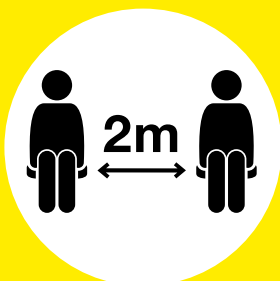
SIZES AVAILABLE: A4, A3, A2, A1, A0

MATERIAL TYPES: Corriboard, Foamex, Solid PVC, Sticker or Poster Paper

## Coronavirus COVID-19



Coronavirus  
COVID-19  
Public Health  
Advice



### REMEMBER To keep 2m apart in the seating area

## COVID-19 REMEMBER TO KEEP 2M APART IN THE SEATING AREA

PRODUCT CODE: 25818

SIZES AVAILABLE: A4, A3, A2, A1, A0

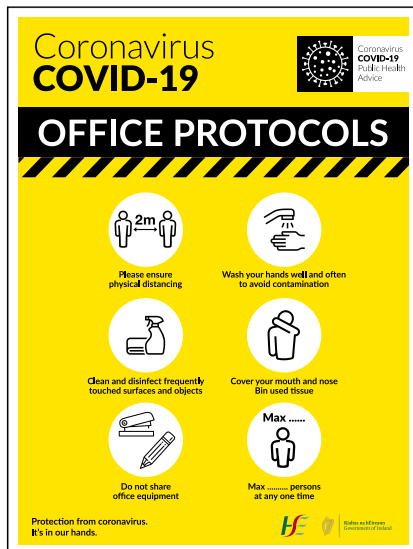
MATERIAL TYPES: Corriboard, Foamex, Solid PVC, Sticker or Poster Paper

**COVID-19 CANTEEN PROTOCOLS**

PRODUCT CODE: 25831

SIZES AVAILABLE: A4, A3, A2, A1, A0

MATERIAL TYPES: Corriboard, Foamex, Solid PVC, Sticker or Poster Paper

**COVID-19 CANTEEN PROTOCOLS**

PRODUCT CODE: 25832

SIZES AVAILABLE: A4, A3, A2, A1, A0

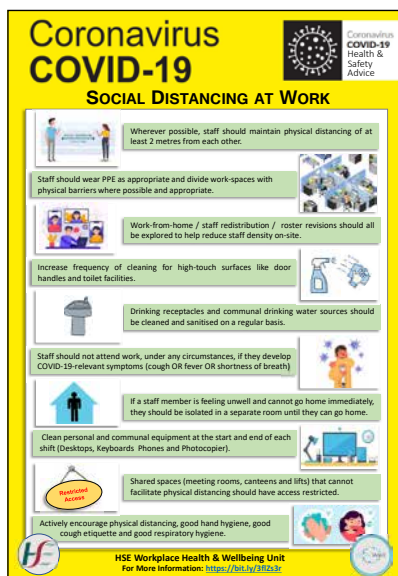
MATERIAL TYPES: Corriboard, Foamex, Solid PVC, Sticker or Poster Paper

**COVID-19 ISOLATION OFFICE**

PRODUCT CODE: 25834

SIZES AVAILABLE: A4, A3, A2, A1, A0

MATERIAL TYPES: Corriboard, Foamex, Solid PVC, Sticker or Poster Paper



## COVID-19 SOCIAL DISTANCING AT WORK

PRODUCT CODE: 25843

SIZES AVAILABLE: A4, A3, A2, A1, A0

MATERIAL TYPES: Corriboard, Foamex, Solid PVC, Sticker or Poster Paper

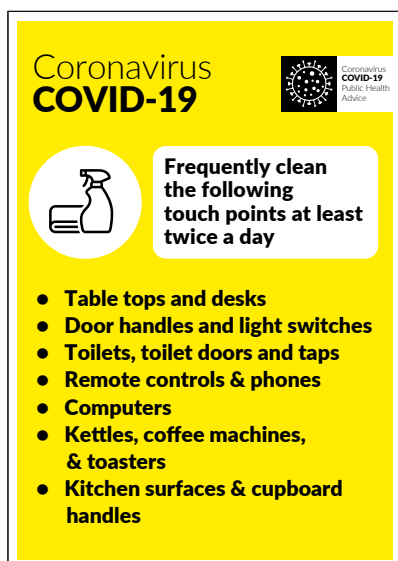


## COVID-19 PLAYING AREA PROTOCOLS

PRODUCT CODE: 25864

SIZES AVAILABLE: A4, A3, A2, A1, A0

MATERIAL TYPES: Corriboard, Foamex, Solid PVC, Sticker or Poster Paper



## COVID-19 FREQUENTLY CLEAN THE FOLLOWING TOUCH POINTS

PRODUCT CODE: 25857

SIZES AVAILABLE: A4, A3, A2, A1, A0

MATERIAL TYPES: Corriboard, Foamex, Solid PVC, Sticker or Poster Paper





## COVID-19 CLEAN WASHROOMS AND SURFACES IN COMMUNAL AREAS AT LEAST TWICE A DAY OR WHEN VISIBLY DIRTY

PRODUCT CODE: 25858

SIZES AVAILABLE: A4, A3, A2, A1, A0

MATERIAL TYPES: Corriboard, Foamex, Solid PVC, Sticker or Poster Paper

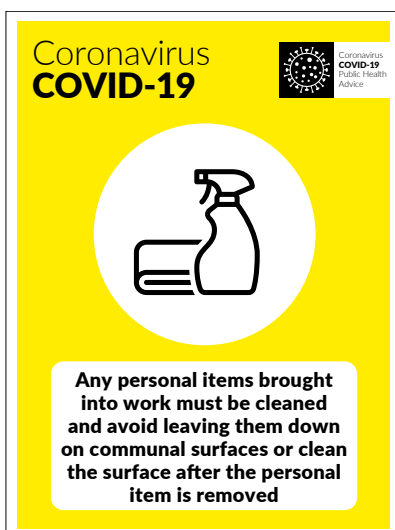


## COVID-19 CLEAN YOUR HANDS PUBLIC TRANSPORT AND WORKPLACE

PRODUCT CODE: 25859

SIZES AVAILABLE: A4, A3, A2, A1, A0

MATERIAL TYPES: Corriboard, Foamex, Solid PVC, Sticker or Poster Paper



## COVID-19 PERSONAL ITEMS INTO WORK MUST BE CLEANED

PRODUCT CODE: 25860

SIZES AVAILABLE: A4, A3, A2, A1, A0

MATERIAL TYPES: Corriboard, Foamex, Solid PVC, Sticker or Poster Paper

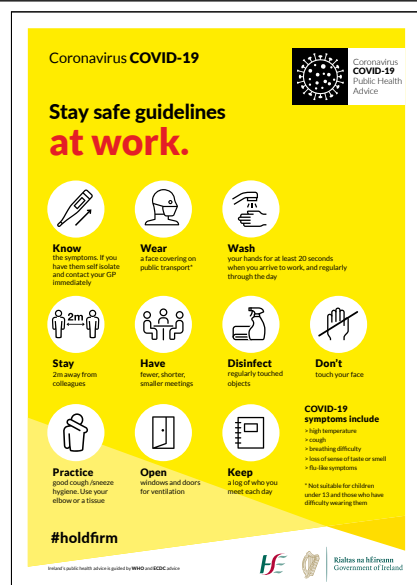


## COVID-19 STAY SAFE GUIDELINES AT HOME

PRODUCT CODE: 25869

SIZES AVAILABLE: A4, A3, A2, A1, A0

MATERIAL TYPES: Corriboard, Foamex, Solid PVC, Sticker or Poster Paper



## COVID-19 STAY SAFE GUIDELINES AT WORK

PRODUCT CODE: 25876

SIZES AVAILABLE: A4, A3, A2, A1, A0

MATERIAL TYPES: Corriboard, Foamex, Solid PVC, Sticker or Poster Paper



## COVID-19 STAY SAFE GUIDELINES EXERCISING OUTDOORS

PRODUCT CODE: 25879

SIZES AVAILABLE: A4, A3, A2, A1, A0

MATERIAL TYPES: Corriboard, Foamex, Solid PVC, Sticker or Poster Paper



## COVID-19 STAY SAFE GUIDELINES AT INDOOR GATHERINGS

PRODUCT CODE: 25870

SIZES AVAILABLE: A4, A3, A2, A1, A0

MATERIAL TYPES: Corriboard, Foamex, Solid PVC, Sticker or Poster Paper



## COVID-19 STAY SAFE GUIDELINES AT OUTDOOR GATHERINGS

PRODUCT CODE: 25871

SIZES AVAILABLE: A4, A3, A2, A1, A0

MATERIAL TYPES: Corriboard, Foamex, Solid PVC, Sticker or Poster Paper



## COVID-19 STAY SAFE GUIDELINES WHEN USING PUBLIC TRANSPORT

PRODUCT CODE: 25878

SIZES AVAILABLE: A4, A3, A2, A1, A0

MATERIAL TYPES: Corriboard, Foamex, Solid PVC, Sticker or Poster Paper





## COVID-19 STAY LOCAL STAY SAFE

PRODUCT CODE: 25868

SIZES AVAILABLE: A4, A3, A2, A1, A0

MATERIAL TYPES: Corriboard, Foamex, Solid PVC, Sticker or Poster Paper



## COVID-19 STAY SAFE GUIDELINES WHEN SHOPPING

PRODUCT CODE: 25877

SIZES AVAILABLE: A4, A3, A2, A1, A0

MATERIAL TYPES: Corriboard, Foamex, Solid PVC, Sticker or Poster Paper



## COVID-19 SANITISATION IN PROGRESS

PRODUCT CODE: 25885

SIZES AVAILABLE: A4, A3, A2, A1, A0

MATERIAL TYPES: Corriboard, Foamex, Solid PVC, Sticker or Poster Paper



Coronavirus  
**COVID-19**



Coronavirus  
**COVID-19**  
Public Health  
Advice



**There should not  
be more than  
..... persons  
in the gym**

## COVID-19 THERE SHOULD NOT BE MORE THAN PERSONS IN THE GYM

PRODUCT CODE: 25886

SIZES AVAILABLE: A4, A3, A2, A1, A0

MATERIAL TYPES: Corriboard, Foamex, Solid PVC, Sticker or Poster Paper

Coronavirus  
**COVID-19**



Coronavirus  
**COVID-19**  
Public Health  
Advice



**There should not  
be more than  
..... persons  
in the jacuzzi**

## COVID-19 THERE SHOULD NOT BE MORE THAN PERSONS IN THE JACUZZI

PRODUCT CODE: 25888

SIZES AVAILABLE: A4, A3, A2, A1, A0

MATERIAL TYPES: Corriboard, Foamex, Solid PVC, Sticker or Poster Paper

Coronavirus  
**COVID-19**



Coronavirus  
**COVID-19**  
Public Health  
Advice



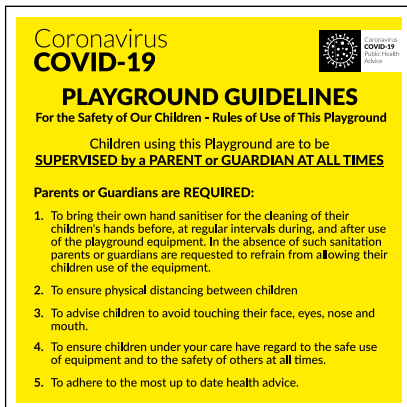
**There should not  
be more than  
..... persons  
in the pool**

## COVID-19 THERE SHOULD NOT BE MORE THAN PERSONS IN THE POOL

PRODUCT CODE: 25889

SIZES AVAILABLE: A4, A3, A2, A1, A0

MATERIAL TYPES: Corriboard, Foamex, Solid PVC, Sticker or Poster Paper



## COVID-19 PLAYGROUND GUIDELINES

PRODUCT CODE: 25890

SIZES AVAILABLE: 600 x 600 mm

MATERIAL TYPES: Corriboard, Foamex, Solid PVC, Sticker or Poster Paper

# COVID-19 PPE Signage





## COVID-19 SAFE USE OF MASKS

PRODUCT CODE: 25835

SIZES AVAILABLE: A4, A3, A2, A1, A0

MATERIAL TYPES: Corriboard, Foamex, Solid PVC, Sticker or Poster Paper

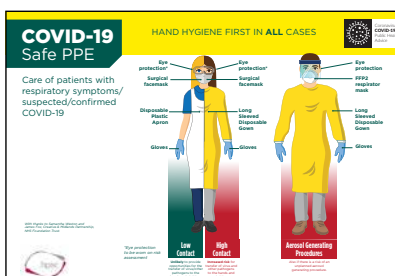


## COVID-19 SAFE USE OF GLOVES

PRODUCT CODE: 25844

SIZES AVAILABLE: A4, A3, A2, A1, A0

MATERIAL TYPES: Corriboard, Foamex, Solid PVC, Sticker or Poster Paper



## COVID-19 SAFE PPE

PRODUCT CODE: 25836

SIZES AVAILABLE: A4, A3, A2, A1, A0

MATERIAL TYPES: Corriboard, Foamex, Solid PVC, Sticker or Poster Paper



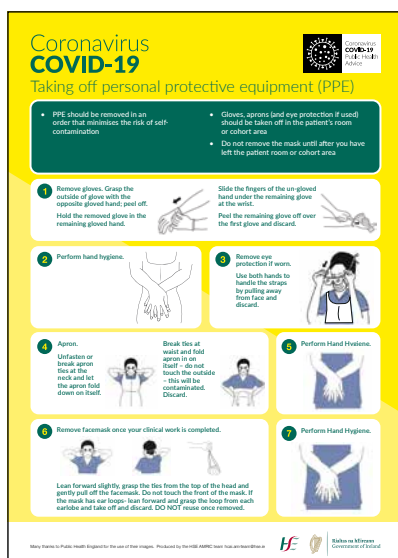


## COVID-19 PUTTING ON PPE

PRODUCT CODE: 25837

SIZES AVAILABLE: A4, A3, A2, A1, A0

MATERIAL TYPES: Corriboard, Foamex, Solid PVC, Sticker or Poster Paper



## COVID-19 TAKING OFF PPE

PRODUCT CODE: 25838

SIZES AVAILABLE: A4, A3, A2, A1, A0

MATERIAL TYPES: Corriboard, Foamex, Solid PVC, Sticker or Poster Paper



## COVID-19 DOFFING GOWNS

PRODUCT CODE: 25839

SIZES AVAILABLE: A4, A3, A2, A1, A0

MATERIAL TYPES: Corriboard, Foamex, Solid PVC, Sticker or Poster Paper



**Coronavirus COVID-19**  
Doffing Coveralls in the context of COVID 19

**DOFFING:** If the isolation room has an ante room, the HCW can exit the isolation room and remove all PPE in the ante room. If the HCW is in patient room or cohort area which does not have an ante room, remove PPE prior to exit EXCEPT for the surgical face mask/respirator mask which should be removed after exit from the patient room or cohort area.

1. Remove gloves and dispose.
2. Perform hand hygiene. The covered thumbs loop will still be in position, so proper hand hygiene will not be feasible.
3. Put on a new pair of gloves to complete the doffing process.
4. If wearing face shield, remove now.
5. Grasp the outer edges of the hood and lift it up and off the head.
6. Remove the coverall. Untuck the coverall by lifting your head back, slide your fingers up to reach the top of the zipper, holding the zip fast, untuck completely without touching any skin or clothing.
7. A. Free your shoulders. B. Remove your arms from the coveralls by keeping them behind your back and pulling each arm out of the sleeves, remove the gloves from each hand at the same time. C. Place hands inside coverall and roll the coverall from the waist down and step out of the coverall. **Hold the inside of the hood.**
8. Roll the used coverall into a ball, taking care not to touch the outside of the coverall. Discard the coverall into the healthcare risk waste bin.
9. Perform hand hygiene.
10. Remove Goggles if wearing.
11. If in the patient room or cohort area, you will need to exit to the ante room to remove your mask. Perform hand hygiene.
12. Remove Respirator or Surgical Face mask. Lean forward slightly, grasp the top straps from the top of the head and gently pull off the face mask. Do not touch the front of the mask. If the mask has ear loops, lean forward and grasp the top straps from each side and take off and discard.
13. Perform hand hygiene.

Many thanks to Public Health England for the use of their images. Produced by the HSE/AMRC team for use in Ireland.

## COVID-19 DOFFING COVERALLS

PRODUCT CODE: 25840

SIZES AVAILABLE: A4, A3, A2, A1, A0

MATERIAL TYPES: Corriboard, Foamex, Solid PVC, Sticker or Poster Paper

**Coronavirus COVID-19**  
Donning Coveralls in the context of COVID 19

**PERFORM IN A DESIGNATED AREA OUTSIDE THE PATIENT ROOM**

**BEFORE YOU BEGIN**

- Check you have a chair to sit on if needed
- Check that items of PPE in your use are available and wear you, as well as a checked hand rub rub (ABHR).
- The sequence of donning PPE for a coverall suit is: hood is slightly different, depending on whether you are going to the patient room or cohort area, follow the recommended sequence for coverall suit, either goggles or visor before

**BEFORE YOU PUT ON PPE**

- Be well hydrated and have taken a toilet break.
- Have removed all jewellery including earrings.
- Be bare before the entrance.
- Have secured your hair back off your face.
- Do not bring mobile phones/sleepers into an isolation area.

1. Perform hand hygiene.
2. Put on coverall, but do not put up the hood. Depending on the style of coverall, it may or may not have integrated feet. If not, each foot may be worn with the coverall.
3. Push your thumbs through the fabric, approximately one inch up from the middle side of each coverall, toward the collar and artificial thumb loop.
4. A. Put on Respirator (FFP2) Mask. B. Put on facemask - Use mask with ties, tie the upper straps on top of head and bring the lower straps up to front of the ears and tie on the ears. C. If using goggles, put on with the "Eye Protection" strap. If using goggles, you will need to use the "Eye Protection" strap. If using goggles, you will need to use the "Eye Protection" strap.
5. Now put up the hood of the coverall and close the zip.
6. If wearing a visor, wear it in position.
7. Put on gloves and pull the gloves up to the cuff and lower sleeve of the coverall.

**Check PPE is secure and comfortable - extend arms, bend at waist, turn and walk up and down - use the mirror to self-check and if available, ask your buddy to confirm**

Many thanks to Public Health England for the use of their images. Produced by the HSE/AMRC team for use in Ireland.

## COVID-19 DONNING COVERALLS

PRODUCT CODE: 25841

SIZES AVAILABLE: A4, A3, A2, A1, A0

MATERIAL TYPES: Corriboard, Foamex, Solid PVC, Sticker or Poster Paper

**Coronavirus COVID-19**  
Guide to donning and doffing standard Personal Protective Equipment (PPE)  
**FOR HEALTH AND SOCIAL CARE SETTINGS**

**DONNING OR PUTTING ON PPE**

- Before putting on the PPE, perform hand hygiene.
- Be well hydrated and have taken a toilet break.
- Have removed all jewellery including earrings.
- Be bare before the entrance.
- Have secured your hair back off your face.
- Do not bring mobile phones/sleepers into an isolation area.

1. Put on your plastic apron, making sure it is fast securely at the back.
2. Put on your surgical face mask. Tie mask with ties. Tie the upper straps on top of head and bring the lower straps up to front of the face and tie on the ears. If the mask has ear loops, lean forward and grasp the top straps from each side and take off and discard.
3. Put on your eye protection if there is a risk of splashing.
4. Put on non-sterile nitrile gloves.
5. You are now ready to enter the patient room.

**DOFFING OR TAKING OFF PPE**

Surgical face masks may be used for single session use but gloves and apron must be changed between patients/residents.

1. Remove gloves, grasp the outside of the cuff of the glove and peel off, holding the glove in the gloved hand, insert the finger underneath and peel off second glove.
2. Perform hand hygiene.
3. Remove eye protection.
4. Once outside the patient room or cohort area, remove surgical facemask.
5. Perform hand hygiene.
6. Grasp or untangle the neck ties and pull forward. Once both ties are held apart in front of you, do not touch the outside as it is contaminated, and put into Healthcare risk waste.
7. Perform hand hygiene.
8. Perform hand hygiene.

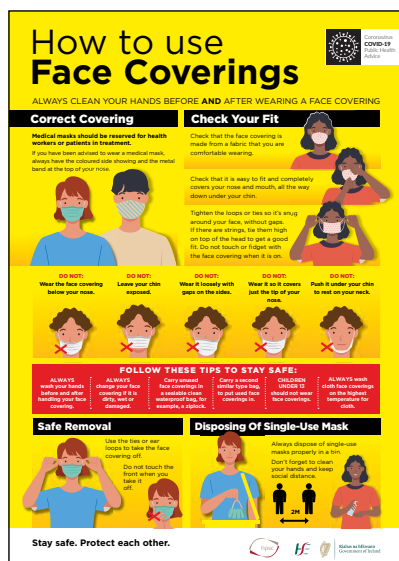
Many thanks to Public Health England for the use of their images. Produced by the HSE/AMRC team for use in Ireland.

## COVID-19 DONNING AND DOFFING HEALTH SOCIAL CARE SETTINGS PLAN

PRODUCT CODE: 25842

SIZES AVAILABLE: A4, A3, A2, A1, A0

MATERIAL TYPES: Corriboard, Foamex, Solid PVC, Sticker or Poster Paper



## COVID-19 HOW TO USE FACE COVERINGS

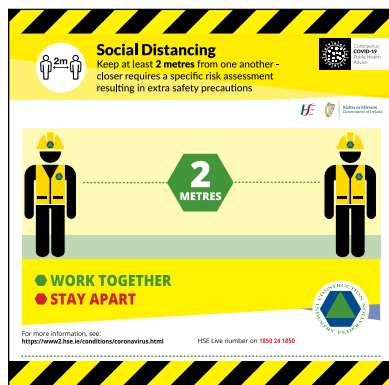
PRODUCT CODE: 25863

SIZES AVAILABLE: A4, A3, A2, A1, A0

MATERIAL TYPES: Corriboard, Foamex, Solid PVC, Sticker or Poster Paper

# CIF Specific Signs



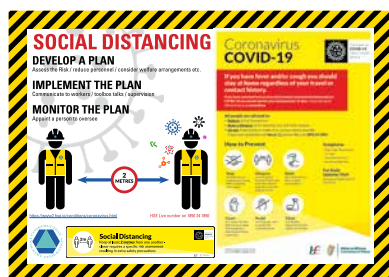


## CONSTRUCTION INDUSTRY FEDERATION SOCIAL DISTANCING

PRODUCT CODE: 25652

SIZES AVAILABLE: 600 x 600mm, 800 x 800mm, 1200 x 1200mm

MATERIAL TYPES: Corriboard, Foamex PVC, Dibond or Poster Paper



## CONSTRUCTION INDUSTRY FEDERATION FOLLOW THE PLAN

PRODUCT CODE: 25653

SIZES AVAILABLE: 600 x 400mm, 800 x 600mm, 1200 x 800mm, 1800 x 1200mm, 2400 x 1200mm

MATERIAL TYPES: Corriboard, Foamex PVC, Dibond or Poster Paper



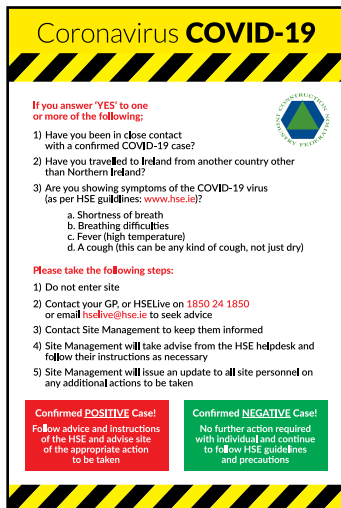
## SOAP KILLS COVID-19

PRODUCT CODE: 25662

SIZES AVAILABLE: 400 x 600mm, 600 x 800mm, 800 x 1200mm

MATERIAL TYPES: Corriboard, Foamex PVC, Dibond or Poster Paper





## CIF SITE AWARENESS

PRODUCT CODE: 25694

SIZES AVAILABLE: 400 x 600mm, 600 x 800mm, 800 x 1200mm

MATERIAL TYPES: Corriboard, Foamex, PVC, Dibond or Poster Paper



## DRIVERS STAY IN YOUR VEHICLE

PRODUCT CODE: 25695

SIZES AVAILABLE: 400 x 600mm, 600 x 800mm, 800 x 1200mm

MATERIAL TYPES: Corriboard, Foamex, PVC, Dibond or Poster Paper



## DO NOT SHARE CLEAN REGULARLY STICKER

PRODUCT CODE: 25690

SIZES AVAILABLE: 150 x 100mm, 300 x 200mm

MATERIAL TYPES: Adhesive Vinyl

PRINTING: Digitally printed full colour in high resolution, Finish: Matte or Gloss



## DO NOT SWITCH DRIVERS STICKER

PRODUCT CODE: 25689

SIZES AVAILABLE: 150 x 100mm, 300 x 200mm

MATERIAL TYPES: Adhesive Vinyl

PRINTING: Digitally printed full colour in high resolution, Finish: Matte or Gloss

# Construction Personal Safety **Equipment**





## SOCIAL DISTANCING HELMET LABELS

PRODUCT CODE: 25710

SIZES AVAILABLE: 60mm

MATERIAL TYPES: Adhesive Vinyl

PRINTING: Digitally printed full colour in high resolution, Finish: Matte or Gloss,

FINISH: Matte or Gloss, Lamination for added protection (if required): Matte or Gloss

SUPPLIED: Sheet or roll format (dependent on quantity)



## DO NOT SHAKE HANDS HELMET LABELS

PRODUCT CODE: 25711

SIZES AVAILABLE: 60mm

MATERIAL TYPES: Adhesive Vinyl

PRINTING: Digitally printed full colour in high resolution, Finish: Matte or Gloss,

FINISH: Matte or Gloss, Lamination for added protection (if required): Matte or Gloss

SUPPLIED: Sheet or roll format (dependent on quantity)



## SOCIAL DISTANCING BADGE

PRODUCT CODE: 25712

SIZES AVAILABLE: (Insert size) 91mm x 75 mm, (Outer size) 97mm x 81 mm

MATERIAL TYPES: Lanyard with Double Sided Social Distancing Badge in plastic pouch. Please note: Lanyard colour may vary and all signs are available in this format. Please specify when ordering.

PRINTING: Digitally printed full colour in high resolution



## SOCIAL DISTANCING HI-VIS VEST

PRODUCT CODE: 25714

SIZES AVAILABLE: Medium, Large, Extra large

COLOUR: Yellow, Green



# Construction Safety **Signs**



**CORONAVIRUS DO NOT TOUCH**

PRODUCT CODE: 25721

SIZES AVAILABLE: **Portrait:** 300 x 400mm, 400 x 600mm, 600 x 800mm  
**Landscape:** 600 x 400mm, 800 x 600mm, 1200 x 800mm  
**Square:** 600 x 600mm, 800 x 800mm, 1200 x 1200mm

MATERIAL: Corriboard

**CORONAVIRUS CONSTRUCTION PERSONNEL ONLY**

PRODUCT CODE: 25722

SIZES AVAILABLE: **Portrait:** 300 x 400mm, 400 x 600mm, 600 x 800mm  
**Landscape:** 600 x 400mm, 800 x 600mm, 1200 x 800mm  
**Square:** 600 x 600mm, 800 x 800mm, 1200 x 1200mm

MATERIAL: Corriboard

**CORONAVIRUS UNAUTHORISED ENTRY PROHIBITED**

PRODUCT CODE: 25724

SIZES AVAILABLE: **Portrait:** 300 x 400mm, 400 x 600mm, 600 x 800mm  
**Landscape:** 600 x 400mm, 800 x 600mm, 1200 x 800mm  
**Square:** 600 x 600mm, 800 x 800mm, 1200 x 1200mm

MATERIAL: Corriboard

**CORONAVIRUS NO ENTRY**

PRODUCT CODE: 25725

SIZES AVAILABLE:

**Portrait:** 300 x 400mm, 400 x 600mm, 600 x 800mm**Landscape:** 600 x 400mm, 800 x 600mm, 1200 x 800mm**Square:** 600 x 600mm, 800 x 800mm, 1200 x 1200mm

MATERIAL:

Corriboard

**CORONAVIRUS HAND SANITISER STATION**

PRODUCT CODE: 25728

SIZES AVAILABLE:

**Portrait:** 300 x 400mm, 400 x 600mm, 600 x 800mm

MATERIAL:

Corriboard

**COVID-19 WASH YOUR HANDS WELL**

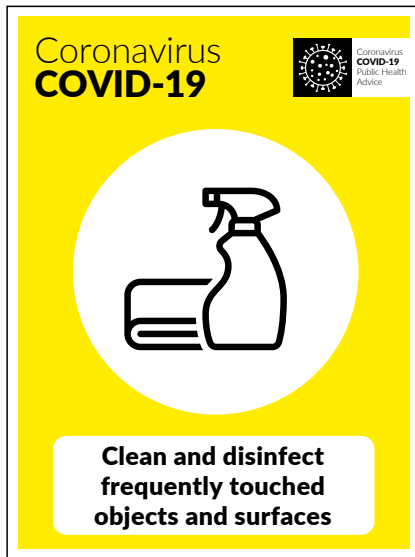
PRODUCT CODE: 25729

SIZES AVAILABLE:

**Portrait:** 300 x 400mm, 400 x 600mm, 600 x 800mm**Landscape:** 600 x 400mm, 800 x 600mm, 1200 x 800mm**Square:** 600 x 600mm, 800 x 800mm, 1200 x 1200mm

MATERIAL:

Corriboard



## COVID-19 CLEAN AND DISINFECT FREQUENTLY

PRODUCT CODE: 25730

SIZES AVAILABLE: **Portrait:** 300 x 400mm, 400 x 600mm, 600 x 800mm  
**Landscape:** 600 x 400mm, 800 x 600mm, 1200 x 800mm  
**Square:** 600 x 600mm, 800 x 800mm, 1200 x 1200mm

MATERIAL: Corriboard

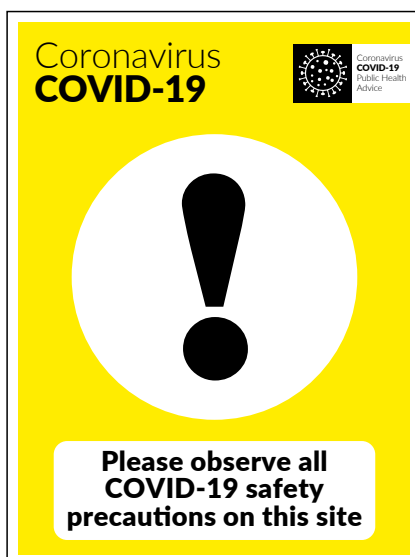


## COVID-19 UNWASHED HANDS

PRODUCT CODE: 25731

SIZES AVAILABLE: **Portrait:** 300 x 400mm, 400 x 600mm, 600 x 800mm  
**Landscape:** 600 x 400mm, 800 x 600mm, 1200 x 800mm  
**Square:** 600 x 600mm, 800 x 800mm, 1200 x 1200mm

MATERIAL: Corriboard

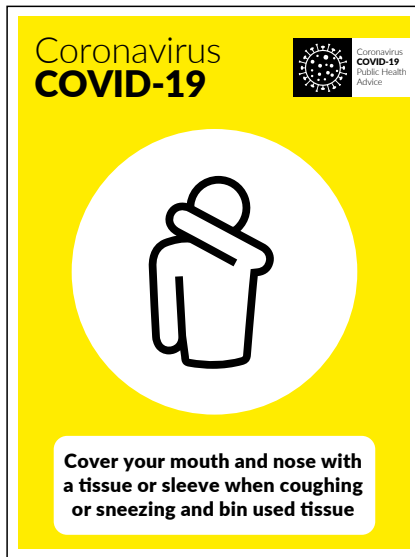


## COVID-19 OBSERVE SAFETY PRECAUTIONS

PRODUCT CODE: 25732

SIZES AVAILABLE: **Portrait:** 300 x 400mm, 400 x 600mm, 600 x 800mm  
**Landscape:** 600 x 400mm, 800 x 600mm, 1200 x 800mm  
**Square:** 600 x 600mm, 800 x 800mm, 1200 x 1200mm

MATERIAL: Corriboard



## CORONAVIRUS COVER YOUR MOUTH

PRODUCT CODE: 25733

SIZES AVAILABLE: **Portrait:** 300 x 400mm, 400 x 600mm, 600 x 800mm  
**Landscape:** 600 x 400mm, 800 x 600mm, 1200 x 800mm  
**Square:** 600 x 600mm, 800 x 800mm, 1200 x 1200mm

MATERIAL: Corriboard



## COVID-19 WEAR PROTECTIVE GLOVES

PRODUCT CODE: 25734

SIZES AVAILABLE: **Portrait:** 300 x 400mm, 400 x 600mm, 600 x 800mm  
**Landscape:** 600 x 400mm, 800 x 600mm, 1200 x 800mm  
**Square:** 600 x 600mm, 800 x 800mm, 1200 x 1200mm

MATERIAL: Corriboard



## COVID-19 WEAR PROTECTIVE CLOTHING

PRODUCT CODE: 25735

SIZES AVAILABLE: **Portrait:** 300 x 400mm, 400 x 600mm, 600 x 800mm  
**Landscape:** 600 x 400mm, 800 x 600mm, 1200 x 800mm  
**Square:** 600 x 600mm, 800 x 800mm, 1200 x 1200mm

MATERIAL: Corriboard

**COVID-19 WEAR FACE MASK**

PRODUCT CODE: 25737

SIZES AVAILABLE: **Portrait:** 300 x 400mm, 400 x 600mm, 600 x 800mm  
**Landscape:** 600 x 400mm, 800 x 600mm, 1200 x 800mm  
**Square:** 600 x 600mm, 800 x 800mm, 1200 x 1200mm

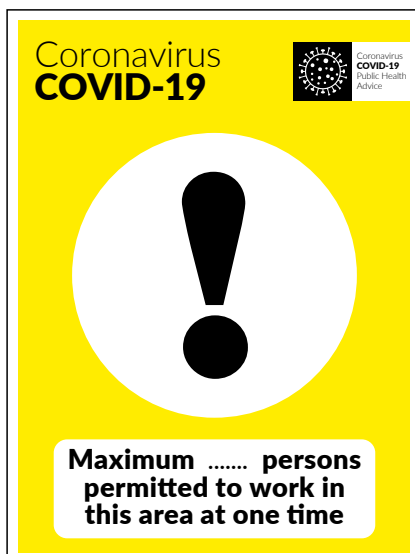
MATERIAL: Corriboard

**COVID-19 NO ACCESS**

PRODUCT CODE: 25736

SIZES AVAILABLE: **Portrait:** 300 x 400mm, 400 x 600mm, 600 x 800mm  
**Landscape:** 600 x 400mm, 800 x 600mm, 1200 x 800mm  
**Square:** 600 x 600mm, 800 x 800mm, 1200 x 1200mm

MATERIAL: Corriboard

**COVID-19 MAX PERSONS PERMITTED WORK**

PRODUCT CODE: 25738

SIZES AVAILABLE: **Portrait:** 300 x 400mm, 400 x 600mm, 600 x 800mm  
**Landscape:** 600 x 400mm, 800 x 600mm, 1200 x 800mm  
**Square:** 600 x 600mm, 800 x 800mm, 1200 x 1200mm

MATERIAL: Corriboard



## COVID-19 PERSONS PERMITTED IN THE CANTEEN

PRODUCT CODE: 25740

SIZES AVAILABLE: **Portrait:** 300 x 400mm, 400 x 600mm, 600 x 800mm  
**Landscape:** 600 x 400mm, 800 x 600mm, 1200 x 800mm  
**Square:** 600 x 600mm, 800 x 800mm, 1200 x 1200mm

MATERIAL: Corriboard

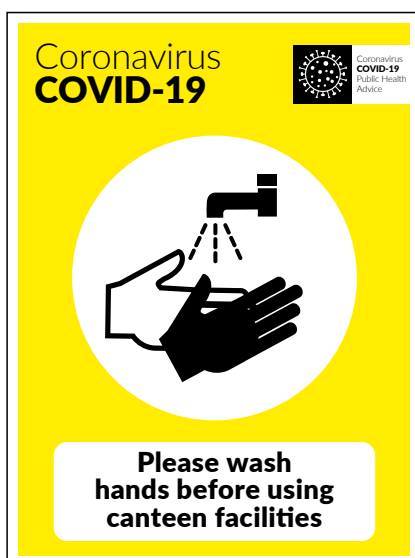


## CORONAVIRUS PROTECT EACH OTHER WORK APART

PRODUCT CODE: 25727

SIZES AVAILABLE: **Square:** 600 x 600mm, 800 x 800mm, 1200 x 1200mm

MATERIAL: Corriboard

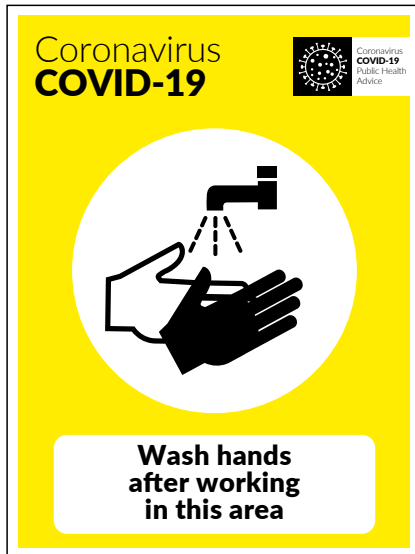


## COVID-19 WASH HANDS CANTEEN FACILITIES

PRODUCT CODE: 25742

SIZES AVAILABLE: **Portrait:** 300 x 400mm, 400 x 600mm, 600 x 800mm  
**Landscape:** 600 x 400mm, 800 x 600mm, 1200 x 800mm  
**Square:** 600 x 600mm, 800 x 800mm, 1200 x 1200mm

MATERIAL: Corriboard

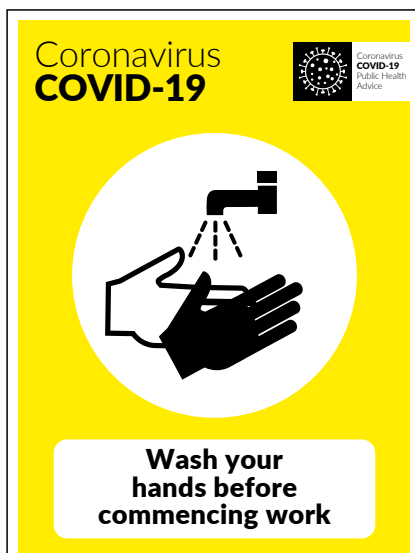


## COVID-19 WASH HANDS AFTER WORKING IN THIS AREA

PRODUCT CODE: 25743

SIZES AVAILABLE: **Portrait:** 300 x 400mm, 400 x 600mm, 600 x 800mm  
**Landscape:** 600 x 400mm, 800 x 600mm, 1200 x 800mm  
**Square:** 600 x 600mm, 800 x 800mm, 1200 x 1200mm

MATERIAL: Corriboard

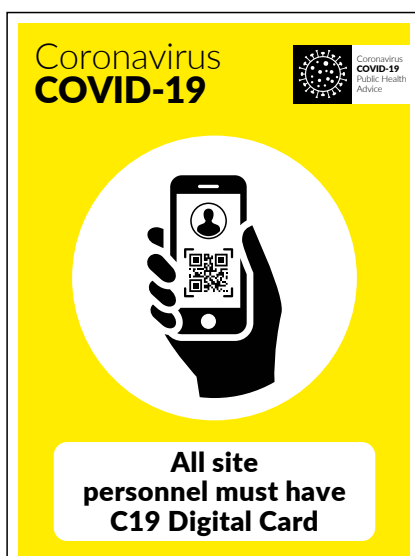


## COVID-19 WASH YOUR HANDS BEFORE COMMENCING WORK

PRODUCT CODE: 25744

SIZES AVAILABLE: **Portrait:** 300 x 400mm, 400 x 600mm, 600 x 800mm  
**Landscape:** 600 x 400mm, 800 x 600mm, 1200 x 800mm  
**Square:** 600 x 600mm, 800 x 800mm, 1200 x 1200mm

MATERIAL: Corriboard



## COVID-19 ALL SITE PERSONNEL MUST HAVE C19 DIGITAL CARD

PRODUCT CODE: 25745

SIZES AVAILABLE: **Portrait:** 300 x 400mm, 400 x 600mm, 600 x 800mm  
**Landscape:** 600 x 400mm, 800 x 600mm, 1200 x 800mm  
**Square:** 600 x 600mm, 800 x 800mm, 1200 x 1200mm

MATERIAL: Corriboard



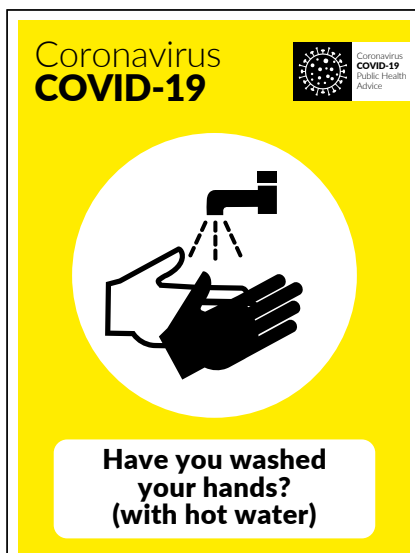


## SHOW SECURITY PERSONNEL YOUR C19 DIGITAL CARD ON ARRIVAL

PRODUCT CODE: 25746

SIZES AVAILABLE: **Portrait:** 300 x 400mm, 400 x 600mm, 600 x 800mm  
**Landscape:** 600 x 400mm, 800 x 600mm, 1200 x 800mm  
**Square:** 600 x 600mm, 800 x 800mm, 1200 x 1200mm

MATERIAL: Corriboard

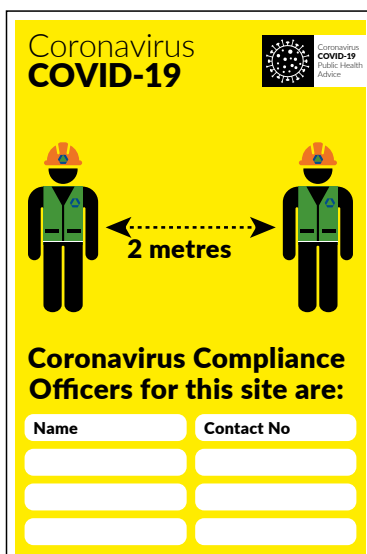


## COVID-19 HAVE YOU WASHED YOUR HANDS WITH HOT WATER

PRODUCT CODE: 25747

SIZES AVAILABLE: **Portrait:** 300 x 400mm, 400 x 600mm, 600 x 800mm  
**Landscape:** 600 x 400mm, 800 x 600mm, 1200 x 800mm  
**Square:** 600 x 600mm, 800 x 800mm, 1200 x 1200mm

MATERIAL: Corriboard

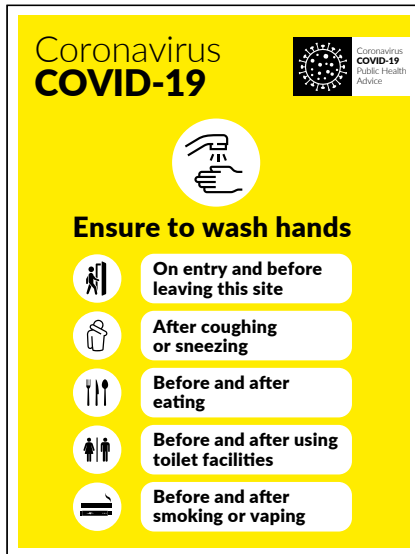


## CORONAVIRUS COMPLIANCE OFFICER

PRODUCT CODE: 25753

SIZES AVAILABLE: **Portrait:** 300 x 400mm, 400 x 600mm, 600 x 800mm  
**Landscape:** 600 x 400mm, 800 x 600mm, 1200 x 800mm  
**Square:** 600 x 600mm, 800 x 800mm, 1200 x 1200mm

MATERIAL: Corriboard



## WASH YOUR HANDS MULTI NOTICE

PRODUCT CODE: 25754

SIZES AVAILABLE: **Portrait:** 300 x 400mm, 400 x 600mm, 600 x 800mm  
**Landscape:** 600 x 400mm, 800 x 600mm, 1200 x 800mm  
**Square:** 600 x 600mm, 800 x 800mm, 1200 x 1200mm

MATERIAL: Corriboard



## ENSURE TO CARRY HAND SANITISER AT ALL TIMES

PRODUCT CODE: 25755

SIZES AVAILABLE: **Portrait:** 300 x 400mm, 400 x 600mm, 600 x 800mm  
**Landscape:** 600 x 400mm, 800 x 600mm, 1200 x 800mm  
**Square:** 600 x 600mm, 800 x 800mm, 1200 x 1200mm

MATERIAL: Corriboard



## HAND SANITISER MUST BE CARRIED AT ALL TIMES AND USED WHEN WORKING IN THIS AREA

PRODUCT CODE: 25756

SIZES AVAILABLE: **Portrait:** 300 x 400mm, 400 x 600mm, 600 x 800mm  
**Landscape:** 600 x 400mm, 800 x 600mm, 1200 x 800mm  
**Square:** 600 x 600mm, 800 x 800mm, 1200 x 1200mm

MATERIAL: Corriboard



## SANITISE ALL TOUCH POINTS AFTER TASK IS COMPLETED

PRODUCT CODE: 25757

SIZES AVAILABLE: **Portrait:** 300 x 400mm, 400 x 600mm, 600 x 800mm  
**Landscape:** 600 x 400mm, 800 x 600mm, 1200 x 800mm  
**Square:** 600 x 600mm, 800 x 800mm, 1200 x 1200mm

MATERIAL: Corriboard

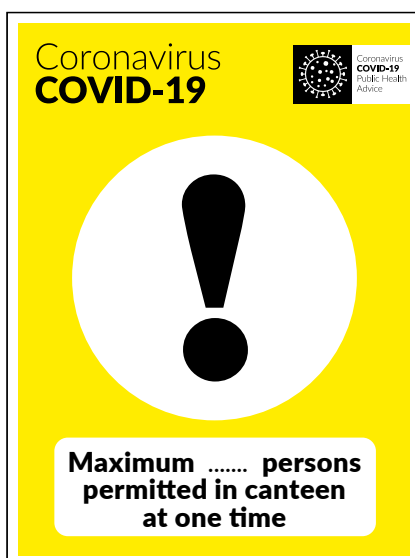


## COVID-19 HAND WASH STATION

PRODUCT CODE: 25758

SIZES AVAILABLE: **Portrait:** 300 x 400mm, 400 x 600mm, 600 x 800mm  
**Landscape:** 600 x 400mm, 800 x 600mm, 1200 x 800mm  
**Square:** 600 x 600mm, 800 x 800mm, 1200 x 1200mm

MATERIAL: Corriboard

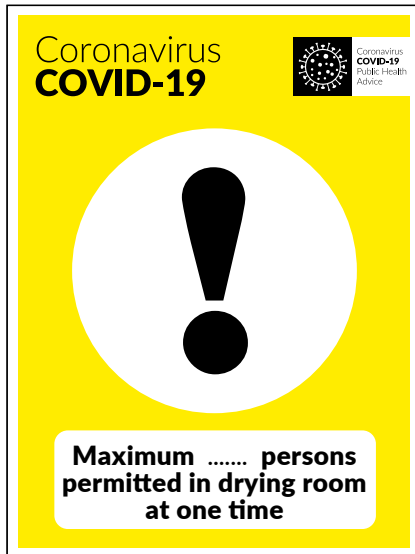


## MAXIMUM PERSONS PERMITTED IN CANTEEN AT ONE TIME

PRODUCT CODE: 25759

SIZES AVAILABLE: **Portrait:** 300 x 400mm, 400 x 600mm, 600 x 800mm  
**Landscape:** 600 x 400mm, 800 x 600mm, 1200 x 800mm  
**Square:** 600 x 600mm, 800 x 800mm, 1200 x 1200mm

MATERIAL: Corriboard

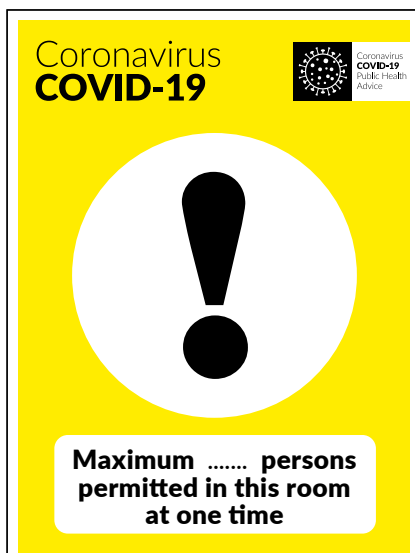


## MAXIMUM PERSONS PERMITTED IN DRYING ROOM AT ONE TIME

PRODUCT CODE: 25760

SIZES AVAILABLE: **Portrait:** 300 x 400mm, 400 x 600mm, 600 x 800mm  
**Landscape:** 600 x 400mm, 800 x 600mm, 1200 x 800mm  
**Square:** 600 x 600mm, 800 x 800mm, 1200 x 1200mm

MATERIAL: Corriboard

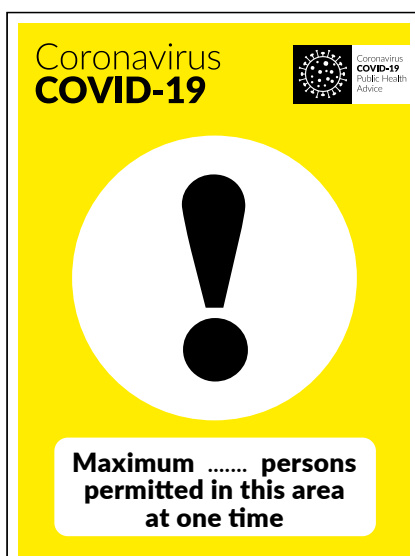


## MAXIMUM PERSONS PERMITTED IN THIS ROOM AT ONE TIME

PRODUCT CODE: 25761

SIZES AVAILABLE: **Portrait:** 300 x 400mm, 400 x 600mm, 600 x 800mm  
**Landscape:** 600 x 400mm, 800 x 600mm, 1200 x 800mm  
**Square:** 600 x 600mm, 800 x 800mm, 1200 x 1200mm

MATERIAL: Corriboard

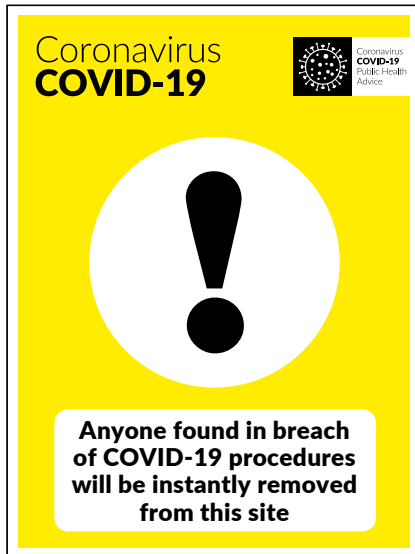


## MAXIMUM PERSONS PERMITTED IN THIS AREA AT ONE TIME

PRODUCT CODE: 25762

SIZES AVAILABLE: **Portrait:** 300 x 400mm, 400 x 600mm, 600 x 800mm  
**Landscape:** 600 x 400mm, 800 x 600mm, 1200 x 800mm  
**Square:** 600 x 600mm, 800 x 800mm, 1200 x 1200mm

MATERIAL: Corriboard



## ANYONE FOUND IN BREACH OF COVID-19 PROCEDURES WILL BE INSTANTLY REMOVED FROM THIS SITE

PRODUCT CODE: 25763

SIZES AVAILABLE: Portrait: 300 x 400mm, 400 x 600mm, 600 x 800mm  
Landscape: 600 x 400mm, 800 x 600mm, 1200 x 800mm  
Square: 600 x 600mm, 800 x 800mm, 1200 x 1200mm

MATERIAL: Corriboard



## GLOVES MASKS AND FACE SHIELDS MUST BE WORN IN THIS AREA

PRODUCT CODE: 25764

SIZES AVAILABLE: Portrait: 300 x 400mm, 400 x 600mm, 600 x 800mm  
Landscape: 600 x 400mm, 800 x 600mm, 1200 x 800mm  
Square: 600 x 600mm, 800 x 800mm, 1200 x 1200mm

MATERIAL: Corriboard



## COVID-19 DO NOT ENTER THIS SITE IF FEELING UNWELL

PRODUCT CODE: 25765

SIZES AVAILABLE: Portrait: 300 x 400mm, 400 x 600mm, 600 x 800mm  
Landscape: 600 x 400mm, 800 x 600mm, 1200 x 800mm  
Square: 600 x 600mm, 800 x 800mm, 1200 x 1200mm

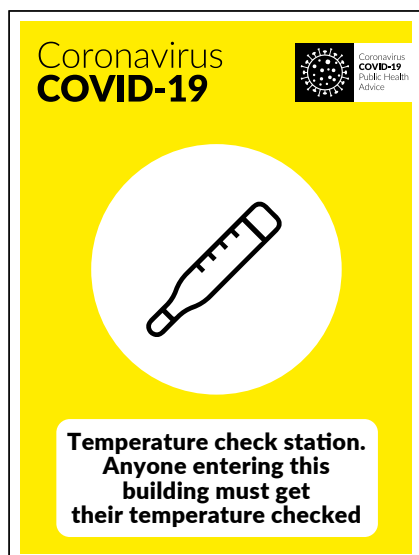
MATERIAL: Corriboard

**COVID-19 EXCLUSION ZONE**

PRODUCT CODE: 25766

SIZES AVAILABLE: Portrait: 300 x 400mm, 400 x 600mm, 600 x 800mm  
Landscape: 600 x 400mm, 800 x 600mm, 1200 x 800mm  
Square: 600 x 600mm, 800 x 800mm, 1200 x 1200mm

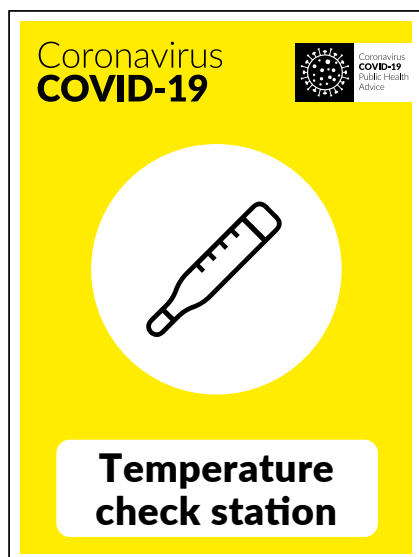
MATERIAL: Corriboard

**COVID-19 TEMPERATURE CHECK STATION**

PRODUCT CODE: 25767

SIZES AVAILABLE: Portrait: 300 x 400mm, 400 x 600mm, 600 x 800mm  
Landscape: 600 x 400mm, 800 x 600mm, 1200 x 800mm  
Square: 600 x 600mm, 800 x 800mm, 1200 x 1200mm

MATERIAL: Corriboard

**CORONAVIRUS TEMPERATURE CHECK ENTERING BUILDING**

PRODUCT CODE: 25768

SIZES AVAILABLE: Portrait: 300 x 400mm, 400 x 600mm, 600 x 800mm  
Landscape: 600 x 400mm, 800 x 600mm, 1200 x 800mm  
Square: 600 x 600mm, 800 x 800mm, 1200 x 1200mm

MATERIAL: Corriboard

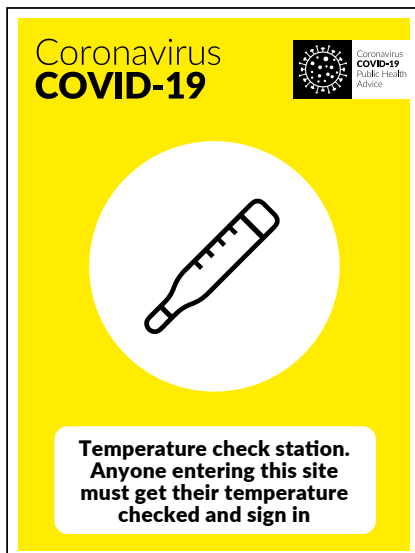


## COVID-19 STOP HAVE YOU HAD YOUR TEMPERATURE CHECKED

PRODUCT CODE: 25769

SIZES AVAILABLE: Portrait: 300 x 400mm, 400 x 600mm, 600 x 800mm  
Landscape: 600 x 400mm, 800 x 600mm, 1200 x 800mm  
Square: 600 x 600mm, 800 x 800mm, 1200 x 1200mm

MATERIAL: Corriboard



## CORONAVIRUS TEMPERATURE CHECK ENTERING SITE

PRODUCT CODE: 25770

SIZES AVAILABLE: Portrait: 300 x 400mm, 400 x 600mm, 600 x 800mm  
Landscape: 600 x 400mm, 800 x 600mm, 1200 x 800mm  
Square: 600 x 600mm, 800 x 800mm, 1200 x 1200mm

MATERIAL: Corriboard



## COVID-19 DELIVERY DRIVER REPORT TO SECURITY ON ARRIVAL

PRODUCT CODE: 25771

SIZES AVAILABLE: Portrait: 300 x 400mm, 400 x 600mm, 600 x 800mm  
Landscape: 600 x 400mm, 800 x 600mm, 1200 x 800mm  
Square: 600 x 600mm, 800 x 800mm, 1200 x 1200mm

MATERIAL: Corriboard



## CORONAVIRUS DELIVERY DRIVER DO NOT LEAVE VEHICLE

PRODUCT CODE: 25772

SIZES AVAILABLE: Portrait: 300 x 400mm, 400 x 600mm, 600 x 800mm  
Landscape: 600 x 400mm, 800 x 600mm, 1200 x 800mm  
Square: 600 x 600mm, 800 x 800mm, 1200 x 1200mm

MATERIAL: Corriboard



## COVID-19 DISPOSE OF FACE MASKS HERE

PRODUCT CODE: 25773

SIZES AVAILABLE: Portrait: 300 x 400mm, 400 x 600mm, 600 x 800mm  
Landscape: 600 x 400mm, 800 x 600mm, 1200 x 800mm  
Square: 600 x 600mm, 800 x 800mm, 1200 x 1200mm

MATERIAL: Corriboard



## COVID-19 DISPOSE OF FACE SHIELDS HERE

PRODUCT CODE: 25774

SIZES AVAILABLE: Portrait: 300 x 400mm, 400 x 600mm, 600 x 800mm  
Landscape: 600 x 400mm, 800 x 600mm, 1200 x 800mm  
Square: 600 x 600mm, 800 x 800mm, 1200 x 1200mm

MATERIAL: Corriboard





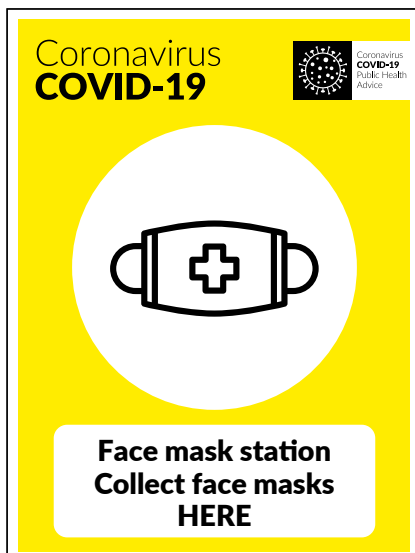


## COVID-19 DISPOSE OF GLOVES HERE

PRODUCT CODE: 25775

SIZES AVAILABLE: Portrait: 300 x 400mm, 400 x 600mm, 600 x 800mm  
Landscape: 600 x 400mm, 800 x 600mm, 1200 x 800mm  
Square: 600 x 600mm, 800 x 800mm, 1200 x 1200mm

MATERIAL: Corriboard

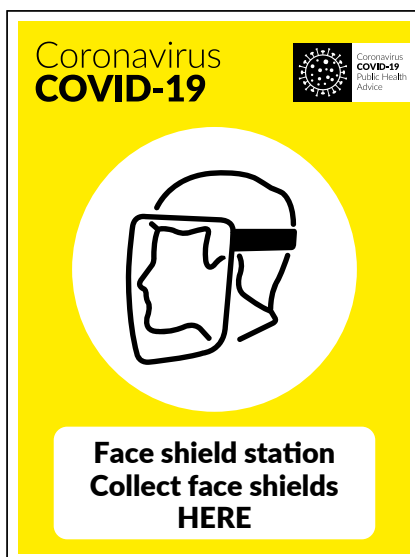


## COVID-19 FACE MASK STATION

PRODUCT CODE: 25776

SIZES AVAILABLE: Portrait: 300 x 400mm, 400 x 600mm, 600 x 800mm  
Landscape: 600 x 400mm, 800 x 600mm, 1200 x 800mm  
Square: 600 x 600mm, 800 x 800mm, 1200 x 1200mm

MATERIAL: Corriboard

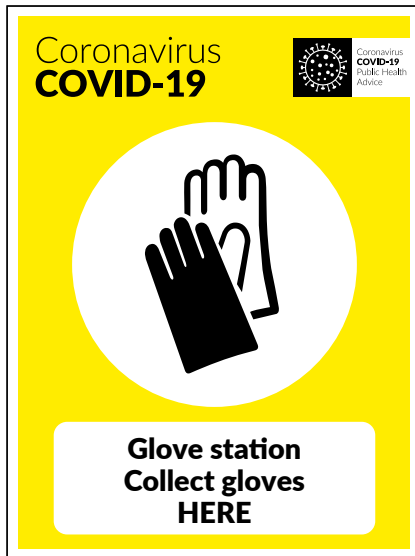


## COVID-19 FACE SHIELD STATION

PRODUCT CODE: 25777

SIZES AVAILABLE: Portrait: 300 x 400mm, 400 x 600mm, 600 x 800mm  
Landscape: 600 x 400mm, 800 x 600mm, 1200 x 800mm  
Square: 600 x 600mm, 800 x 800mm, 1200 x 1200mm

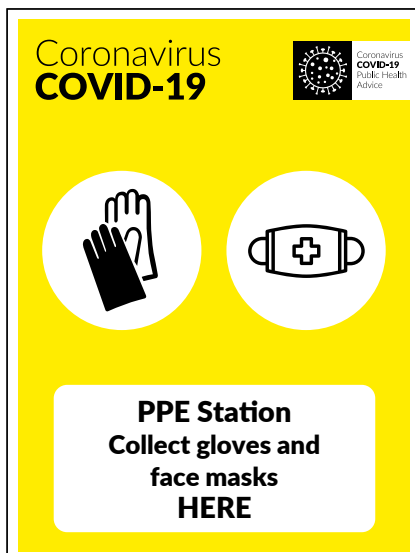
MATERIAL: Corriboard

**COVID-19 GLOVE STATION**

PRODUCT CODE: 25778

SIZES AVAILABLE: Portrait: 300 x 400mm, 400 x 600mm, 600 x 800mm  
 Landscape: 600 x 400mm, 800 x 600mm, 1200 x 800mm  
 Square: 600 x 600mm, 800 x 800mm, 1200 x 1200mm

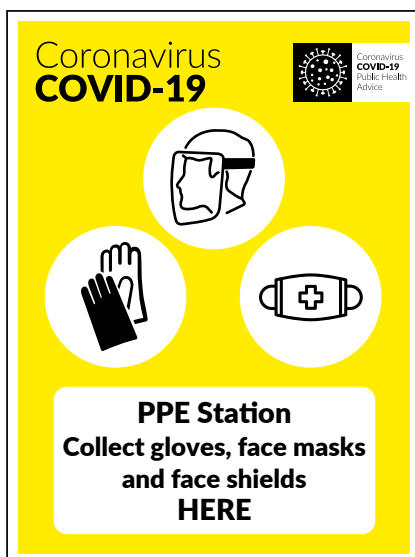
MATERIAL: Corriboard

**PPE STATION COLLECT GLOVES AND FACE MASKS**

PRODUCT CODE: 25779

SIZES AVAILABLE: Portrait: 300 x 400mm, 400 x 600mm, 600 x 800mm  
 Landscape: 600 x 400mm, 800 x 600mm, 1200 x 800mm  
 Square: 600 x 600mm, 800 x 800mm, 1200 x 1200mm

MATERIAL: Corriboard

**PPE STATION COLLECT GLOVES FACE MASKS AND FACE SHIELDS**

PRODUCT CODE: 25780

SIZES AVAILABLE: Portrait: 300 x 400mm, 400 x 600mm, 600 x 800mm  
 Landscape: 600 x 400mm, 800 x 600mm, 1200 x 800mm  
 Square: 600 x 600mm, 800 x 800mm, 1200 x 1200mm

MATERIAL: Corriboard

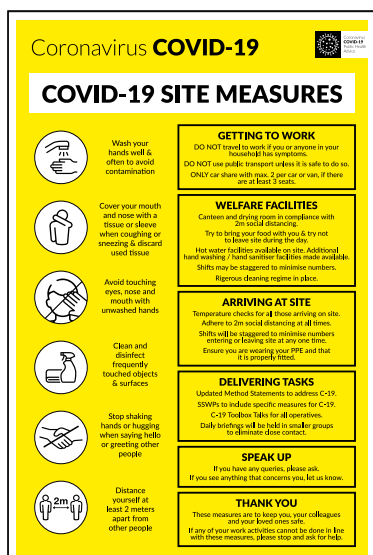


## COVID-19 USE PEDESTRIAN WALKWAY ONE WAY SYSTEM

PRODUCT CODE: 25795

SIZES AVAILABLE: Portrait: 300 x 400mm, 400 x 600mm, 600 x 800mm  
Landscape: 600 x 400mm, 800 x 600mm, 1200 x 800mm  
Square: 600 x 600mm, 800 x 800mm, 1200 x 1200mm

MATERIAL: Corriboard

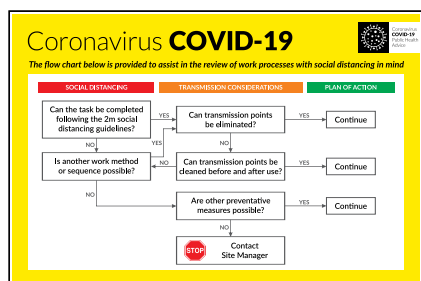


## COVID-19 SITE MEASURES

PRODUCT CODE: 25781

SIZES AVAILABLE: Portrait: 300 x 400mm, 400 x 600mm, 600 x 800mm  
Landscape: 600 x 400mm, 800 x 600mm, 1200 x 800mm  
Square: 600 x 600mm, 800 x 800mm, 1200 x 1200mm

MATERIAL: Corriboard

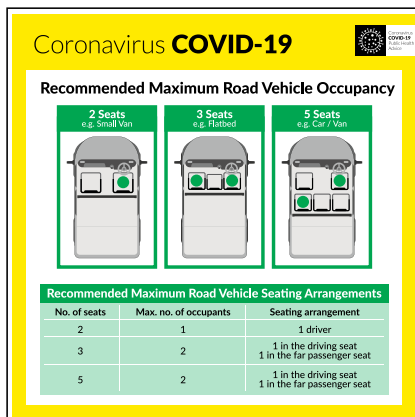


## COVID-19 FLOW CHART

PRODUCT CODE: 25783

SIZES AVAILABLE: Landscape: 600 x 400mm, 800 x 600mm, 1200 x 800mm

MATERIAL: Corriboard



## CORONAVIRUS RECOMMENDED MAX ROAD VEHICLE OCCUPANCY

PRODUCT CODE: 25784

SIZES AVAILABLE: Square: 600 x 600mm, 800 x 800mm, 1200 x 1200mm

MATERIAL: Corriboard

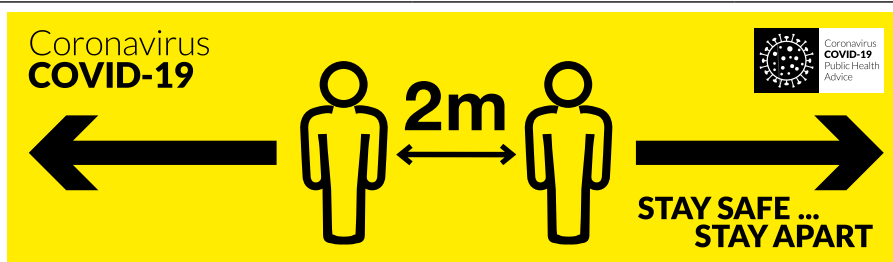


## CORONAVIRUS ISOLATION OFFICE

PRODUCT CODE: 25834

SIZES AVAILABLE: A4, A3, A2, A1, A0

MATERIAL: Corriboard, Foamex, Solid PVC, Sticker or Poster Paper



## CORONAVIRUS STAY SAFE STAY APART

PRODUCT CODE: 25845

SIZES AVAILABLE: 2m x 600mm

MATERIAL TYPES: Corriboard

# General Safety Signs

## **WASH YOUR HANDS**

Protect yourself and others from getting COVID-19

**AFTER COUGHING  
OR SNEEZING**

**BEFORE, DURING AND AFTER  
YOU PREPARE FOOD**

**BEFORE EATING**

**WHEN HANDS ARE  
VISIBLY DIRTY**

**AVOID SHAKING HANDS**



USE SOAP



PALM TO PALM



FINGERS  
INTERLACED



BASE  
OF THUMBS



WRISTS



DRY  
HANDS

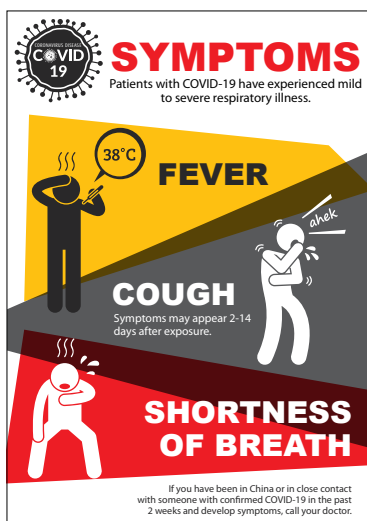


## PREVENT THE SPREAD OF COVID-19

PRODUCT CODE: 25599

SIZES AVAILABLE: 200 x 300mm, 300 x 400mm, 400 x 600mm, 600 x 800mm & 800 x 1200mm

MATERIAL TYPES: Corriboard, Foamex PVC, Dibond or Poster Paper



## COVID-19 SYMPTOMS

PRODUCT CODE: 25604

SIZES AVAILABLE: 200 x 300mm, 300 x 400mm, 400 x 600mm, 600 x 800mm and 800 x 1200mm

MATERIAL TYPES: Corriboard, Foamex PVC, Dibond or Poster Paper

## WASH YOUR HANDS

Protect yourself and others from getting COVID-19



## WASH YOUR HANDS COVID-19

PRODUCT CODE: 25605

SIZES AVAILABLE: 200 x 300mm, 300 x 400mm, 400 x 600mm, 600 x 800mm and 800 x 1200mm

MATERIAL TYPES: Corriboard, Foamex PVC, Dibond, Poster Paper & Self Adhesive



**Please use  
your own cup  
and thoroughly  
wash and dry  
canteen utensils  
after each use**

### PLEASE USE YOUR OWN CUP & THOROUGHLY WASH & DRY CANTEEN UTENSILS

PRODUCT CODE: 25617

SIZES AVAILABLE: 200 x 300mm, 300 x 400mm

MATERIAL TYPES: Corriboard, Foamex PVC, Poster Paper & Self Adhesive



**Please wash  
your hands  
before and  
after eating  
and wipe down  
the countertop  
when finished**

### PLEASE WASH YOUR HANDS BEFORE & AFTER EATING & WIPE DOWN THE COUNTERTOP WHEN FINISHED

PRODUCT CODE: 25615

SIZES AVAILABLE: 200 x 300mm, 300 x 400mm

MATERIAL TYPES: Corriboard, Foamex PVC, Poster Paper & Self Adhesive



**Now wash  
your hands**

### NOW WASH YOUR HANDS

PRODUCT CODE: CSSC2

SIZES AVAILABLE: 200 x 300mm, 300 x 400mm

MATERIAL TYPES: Corriboard, Foamex PVC, Poster Paper & Self Adhesive



**Instant hand  
sanitiser  
Use between  
hand washing**

### INSTANT HAND SANITISER USE BETWEEN HAND WASHING MANDATORY

PRODUCT CODE: HHSA58

SIZES AVAILABLE: 200 x 300mm, 300 x 400mm

MATERIAL TYPES: Corriboard, Foamex PVC, Poster Paper & Self Adhesive



**Please bring in  
your own  
food utensils  
and wash/dry  
after use**

### PLEASE BRING IN YOUR OWN FOOD UTENSILS AND WASH DRY AFTER USE

PRODUCT CODE: 25613

SIZES AVAILABLE: 200 x 300mm, 300 x 400mm

MATERIAL TYPES: Corriboard, Foamex PVC, Poster Paper & Self Adhesive



**Help prevent the  
spread of flu and  
other viruses**



#### Catch it

Cover your nose and mouth  
with a clean tissue when you  
cough or sneeze



#### Bin it

Dispose of used tissues  
in your nearest bin as soon  
as possible



#### Kill it

Washing your hands  
immediately and cleaning  
surfaces, helps prevent  
the spread of germs

### CATCH IT BIN IT KILL IT

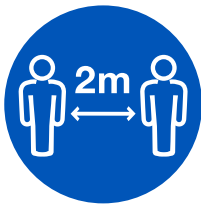
PRODUCT CODE: 25643

SIZES AVAILABLE: 200 x 300mm, 300 x 400mm, 400 x 600mm

MATERIAL TYPES: Corriboard, Foamex PVC, Poster Paper & Self Adhesive







### **Social Distancing**

To protect yourself and our staff we are only allowing one customer in at a time.

Please wait outside until the person before you has left, try to maintain a distance of 2 metres between you and others.

### **KEEP YOUR SOCIAL DISTANCING**

PRODUCT CODE: 25644

SIZES AVAILABLE: 200 x 300mm, 300 x 400mm, 400 x 600mm

MATERIAL TYPES: Corriboard, Foamex PVC, Poster Paper & Self Adhesive



**WARNING**  
**Biological hazard**

### **WARNING BIOLOGICAL HAZARD CHEMICAL & SUBSTANCE HAZARD**

PRODUCT CODE: IWSJ8

SIZES AVAILABLE: 150 x 200mm, 200 x 300mm, 300 x 400mm, 400 x 600mm

MATERIAL TYPES: Corriboard, Foamex PVC, Poster Paper & Self Adhesive



**WARNING**  
**Risk of infection**

### **WARNING RISK OF INFECTION CHEMICAL & SUBSTANCE HAZARD**

PRODUCT CODE: IWSJ7

SIZES AVAILABLE: 150 x 200mm, 200 x 300mm, 300 x 400mm, 400 x 600mm

MATERIAL TYPES: Corriboard, Foamex PVC, Poster Paper & Self Adhesive



**WARNING**  
Biohazard  
area

**Wear personal  
protective  
clothing**

### WARNING BIOHAZARD AREA WEAR PERSONAL PROTECTIVE CLOTHING CHEMICAL & SUBSTANCE HAZARD

PRODUCT CODE: IWSJ59

SIZES AVAILABLE: 150 x 200mm, 200 x 300mm, 300 x 400mm, 400 x 600mm

MATERIAL TYPES: Corriboard, Foamex PVC, Poster Paper & Self Adhesive



**CAUTION**  
Quarantine  
area

### CAUTION QUARANTINE AREA

PRODUCT CODE: 25645

SIZES AVAILABLE: 150 x 200mm, 200 x 300mm, 300 x 400mm, 400 x 600mm

MATERIAL TYPES: Corriboard, Foamex PVC, Poster Paper & Self Adhesive



**Danger of  
infection**

### DANGER OF INFECTION

PRODUCT CODE: 25646

SIZES AVAILABLE: 150 x 200mm, 200 x 300mm, 300 x 400mm, 400 x 600mm

MATERIAL TYPES: Corriboard, Foamex PVC, Poster Paper & Self Adhesive



**We are  
self isolating**



**PLEASE  
do not enter**

## WE ARE SELF ISOLATING PLEASE DO NOT ENTER

PRODUCT CODE: 25647

SIZES AVAILABLE: 150 x 200mm, 200 x 300mm, 300 x 400mm, 400 x 600mm

MATERIAL TYPES: Corriboard, Foamex PVC, Poster Paper & Self Adhesive



### Caution

We have put the following  
preventative measures in place  
to protect our customers and staff  
from contracting COVID-19



### Protect yourself and others

To reduce the risk of infection  
please use the hand sanitiser  
provided before entering  
and leaving the building



### Follow Social Distancing

Please distance yourself  
at least 2 metres (6 feet)  
away from other people  
at all times



### Avoid touching

surfaces and products  
unless absolutely necessary

## CAUTION PREVENTATIVE MEASURES IN PLACE

PRODUCT CODE: 25648

SIZES AVAILABLE: 150 x 200mm, 200 x 300mm, 300 x 400mm, 400 x 600mm

MATERIAL TYPES: Corriboard, Foamex PVC, Poster Paper & Self Adhesive



**Please do not  
enter.  
This building  
has been closed  
for a deep clean**

## PLEASE DO NOT ENTER - THIS BUILDING HAS BEEN CLOSED FOR A DEEP CLEAN

PRODUCT CODE: 25649

SIZES AVAILABLE: 150 x 200mm, 200 x 300mm, 300 x 400mm, 400 x 600mm

MATERIAL TYPES: Corriboard, Foamex PVC, Poster Paper & Self Adhesive



**Please do not  
shake hands**

### PLEASE DO NOT SHAKE HANDS

PRODUCT CODE: 25650

SIZES AVAILABLE: 150 x 200mm, 200 x 300mm, 300 x 400mm, 400 x 600mm

MATERIAL TYPES: Corriboard, Foamex PVC, Poster Paper & Self Adhesive



**Hand  
sanitiser  
station**

### HAND SANITISER STATION

PRODUCT CODE: 25715

SIZES AVAILABLE: 150 x 200mm, 200 x 300mm, 300 x 400mm, 400 x 600mm

MATERIAL TYPES: Corriboard, Foamex PVC, Poster Paper & Self Adhesive

# Floor Stickers





## CORONAVIRUS CIRCULAR FLOOR STICKER

PRODUCT CODE: 25618

SIZES AVAILABLE: 400mm Diameter

MATERIAL TYPES: Self Adhesive Floor Vinyl with Durable Textured Anti-Slip Laminate



## CORONAVIRUS OVAL FLOOR STICKER

PRODUCT CODE: 25666

SIZES AVAILABLE: 450 x 300mm

MATERIAL TYPES: Self Adhesive Floor Vinyl with Durable Textured Anti-Slip Laminate



## CORONAVIRUS DIRECTIONAL ARROW FLOOR STICKER

PRODUCT CODE: 25655

SIZES AVAILABLE: 300mm Diameter

MATERIAL TYPES: Self Adhesive Floor Vinyl with Durable Textured Anti-Slip Laminate



### SOCIAL DISTANCING FOOTPRINTS FLOOR STICKER

PRODUCT CODE: 25808

SIZES AVAILABLE: 400mm Diameter

MATERIAL TYPES: Self Adhesive Floor Vinyl with Durable Textured Anti-Slip Laminate



### COVID-19 ONE WAY SYSTEM IN OPERATION FLOOR STICKER

PRODUCT CODE: 25893

SIZES AVAILABLE: 400mm Diameter

MATERIAL TYPES: Self Adhesive Floor Vinyl with Durable Textured Anti-Slip Laminate



### REMEMBER SOCIAL DISTANCING FLOOR STICKER

PRODUCT CODE: 25911

SIZES AVAILABLE: 400mm Diameter

MATERIAL TYPES: Self Adhesive Floor Vinyl with Durable Textured Anti-Slip Laminate



**LET'S KEEP OUR SOCIAL DISTANCE FLOOR STICKER**

PRODUCT CODE: 25633

SIZES AVAILABLE: 400 x 400mm

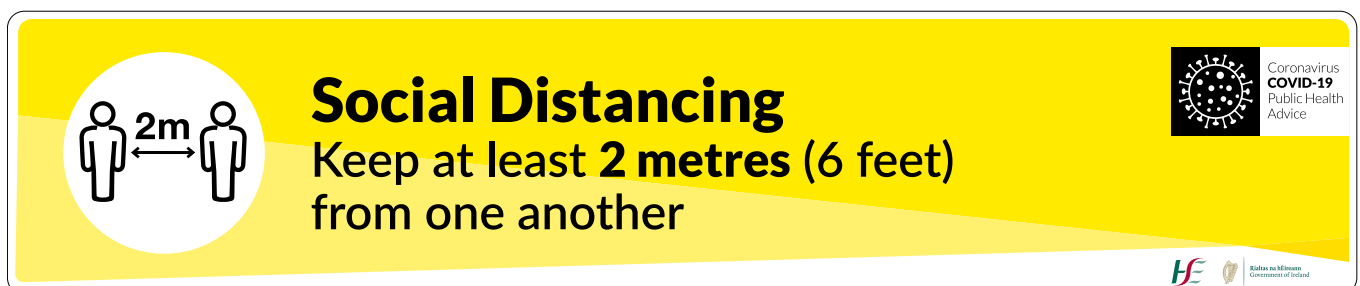
MATERIAL TYPES: Self Adhesive Floor Vinyl with Durable Textured Anti-Slip Laminate

**CORONAVIRUS SOCIAL DISTANCING FLOOR STICKER**

PRODUCT CODE: 25637

SIZES AVAILABLE: 1m x 75mm &amp; 2m x 100mm

MATERIAL TYPES: Self Adhesive Floor Vinyl with Durable Textured Anti-Slip Laminate

**COVID-19 HSE FLOOR STICKER**

PRODUCT CODE: 25654

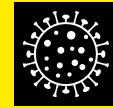
SIZES AVAILABLE: 1m x 210mm &amp; 2m x 420mm

MATERIAL TYPES: Removable Adhesive Floor Vinyl with Anti-Slip Protective Laminate



## Physical Distancing

For your safety please keep **2 metres** (6 feet) from one another in queues



Coronavirus  
**COVID-19**  
Public Health  
Advice



Rialtas na hÉireann  
Government of Ireland

### PHYSICAL DISTANCING FLOOR STICKER

PRODUCT CODE: 25677

SIZES AVAILABLE: 1m x 210mm & 2m x 420mm

MATERIAL TYPES: Removable Adhesive Floor Vinyl with Anti-Slip Protective Laminate



### PLEASE MAINTAIN 2 METRE DISTANCE FLOOR STICKER

PRODUCT CODE: 25700

SIZES AVAILABLE: 2.4m x 300mm

MATERIAL TYPES: Removable Adhesive Floor Vinyl with Anti-Slip Protective Laminate



### 2 METRE DISTANCE ARROW FLOOR STICKER

PRODUCT CODE: 25701

SIZES AVAILABLE: 2m x 150mm

MATERIAL TYPES: Removable Adhesive Floor Vinyl with Anti-Slip Protective Laminate





# Please Keep Your Distance!



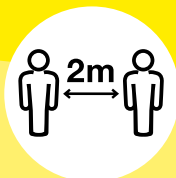
Coronavirus  
**COVID-19**  
Public Health  
Advice

## PLEASE KEEP YOUR DISTANCE FLOOR STICKER

PRODUCT CODE: 25702

SIZES AVAILABLE: 1m x 100mm

MATERIAL TYPES: Removable Adhesive Floor Vinyl with Anti-Slip Protective Laminate



## Social Distancing

Keep at least 1 metre (3 feet)  
ideally at least **2 metres** (6 feet) from one another



Coronavirus  
**COVID-19**  
Public Health  
Advice



Health is Wealth  
Government of Ireland

## SOCIAL DISTANCING AT LEAST 1 METRE IDEALLY 2 METRES FLOOR

PRODUCT CODE: 25677

SIZES AVAILABLE: 1m x 210mm & 2m x 420mm

MATERIAL TYPES: Removable Adhesive Floor Vinyl with Anti-Slip Protective Laminate



# Social Distancing **Floor Tapes**





## SOCIAL DISTANCING FLOOR TAPE

PRODUCT CODE: 25699

SIZES AVAILABLE: 48mm x 33m, Roll repeats every 502mm

MATERIAL TYPES: PVC Self Adhesive Base, over laminate with clear BOPP



## CHEVRON FLOOR TAPE

PRODUCT CODE: 25750

SIZES AVAILABLE: 48mm x 33m, Roll repeats every 502mm

MATERIAL TYPES: PVC Self Adhesive Base, over laminate with clear BOPP



## PLEASE WAIT ON THIS LINE FLOOR TAPE

PRODUCT CODE: 25751

SIZES AVAILABLE: 48mm x 33m, Roll repeats every 502mm

MATERIAL TYPES: PVC Self Adhesive Base, over laminate with clear BOPP

# Wall & Window Stickers





### COVID-19 ONLY PERSONS PERMITTED IN THE CANTEEN AT ANY ONE TIME

PRODUCT CODE: 25849

SIZES AVAILABLE: 400mm Diameter

MATERIAL TYPES: Laminated Vinyl Sticker



### COVID-19 ONLY PERSONS PERMITTED IN THIS MEETING ROOM AT ANY ONE TIME

PRODUCT CODE: 25851

SIZES AVAILABLE: 400mm Diameter

MATERIAL TYPES: Laminated Vinyl Sticker



### COVID-19 ONLY PERSONS PERMITTED IN-STORE AT ANY ONE TIME

PRODUCT CODE: 25850

SIZES AVAILABLE: 400mm Diameter

MATERIAL TYPES: Laminated Vinyl Sticker



### COVID-19 THIS ROOM CAN ONLY ACCOMMODATE PERSONS

PRODUCT CODE: 25847

SIZES AVAILABLE: 400mm Diameter

MATERIAL TYPES: Laminated Vinyl Sticker



# Social Distancing **Seat Stickers**





**COVID-19 PLEASE LEAVE THIS SEAT FREE**

PRODUCT CODE: 25805

SIZES AVAILABLE: 150mm diameter

MATERIAL TYPES: Laminated Vinyl Sticker

**COVID-19 PLEASE SIT HERE**

PRODUCT CODE: 25807

SIZES AVAILABLE: 150mm diameter

MATERIAL TYPES: Laminated Vinyl Sticker

**COVID-19 SEAT OUT OF USE**

PRODUCT CODE: 25806

SIZES AVAILABLE: 150mm diameter

MATERIAL TYPES: Laminated Vinyl Sticker

**COVID-19 TABLE OUT OF USE**

PRODUCT CODE: 25822

SIZES AVAILABLE: 150mm diameter

MATERIAL TYPES: Laminated Vinyl Sticker

**COVID-19 PLEASE USE THIS TABLE**

PRODUCT CODE: 25825

SIZES AVAILABLE: 150mm diameter

MATERIAL TYPES: Laminated Vinyl Sticker

**COVID-19 PLEASE WIPE DOWN TABLE AND CHAIR AFTER USE**

PRODUCT CODE: 25823

SIZES AVAILABLE: 150mm diameter

MATERIAL TYPES: Laminated Vinyl Sticker

**COVID-19 SCAN TO VIEW MENU TABLE STICKER**

PRODUCT CODE: 25867

SIZES AVAILABLE: 100mm diameter

MATERIAL TYPES: Laminated Vinyl Sticker

# COVID-19 Hygiene Stations





## AUTO HAND SANITISER DISPENSER STRAIGHT STAND

PRODUCT CODE: 25803

SIZES AVAILABLE: Height 1200mm

MATERIAL: Board Thickness 36 mm, Heavyweight Base 330 mm, Automatic Fluid Dispenser (Battery Powered), Attachable PVC Board



## WALL MOUNTED AUTOMATIC HAND SANITISER DISPENSER

PRODUCT CODE: 25912

SIZES AVAILABLE: 300 x 400mm

MATERIAL: 10mm Foamex Automatic Fluid Dispenser

# Free Standing **Display Stands**





## COVID-19 DESKTOP AWARENESS

PRODUCT CODE: 25611

SIZES AVAILABLE: A4 & A5

MATERIAL TYPES: Strut Card

PLEASE NOTE: All signs are available in this format. Please specify



## COVID-19 PORTABLE A BOARD STAND

PRODUCT CODE: 25660

SIZES AVAILABLE: 600 x 800mm & 800 x 1200mm

MATERIAL TYPES: Corriboard

PLEASE NOTE: All signs are available in this format. Please specify



## CORONAVIRUS INFORMATION STAND

PRODUCT CODE: 25619

SIZES AVAILABLE: A4

MATERIAL TYPES: Black A4 Frame, Pole Height 830mm - 1500mm

PLEASE NOTE: All signs are available in this format. Please specify



## CORONAVIRUS SANDWICH BOARD

PRODUCT CODE: 25634

SIZES AVAILABLE: A1 - 574mm (w) x 821mm (h)  
A0 - 821mm (w) x 1169mm (h)

DISPLAY TYPE: Double sided

PLEASE NOTE: All signs are available in this format. Please specify





## CORONAVIRUS INFECTION CONTROL ROLL UP BANNER

PRODUCT CODE: 25635



DISPLAY TYPE: Single-sided

MATERIAL TYPES: Scrimless Pet Grey Black, 125 micron in thickness

### Venus 850

GRAPHIC DISPLAY SIZE: 850mm (w) x 2050mm (h)

TOTAL DISPLAY SIZE: 850mm (w) x 2200mm (h)

### Venus 1200

GRAPHIC DISPLAY SIZE: 1200mm (w) x 2050mm (h)

TOTAL DISPLAY SIZE: 1200mm (w) x 2200mm (h)

### Venus 1500

GRAPHIC DISPLAY SIZE: 1500mm (w) x 2050mm (h)

TOTAL DISPLAY SIZE: 1500mm (w) x 2200mm (h)

PLEASE NOTE: All signs are available in this format. Please specify

## SOCIAL DISTANCING FORECOURT DISPLAY STAND - THE ICON

PRODUCT CODE: 25651



SIZES AVAILABLE: A1 580mm (w) x 827mm (h)  
A0 - 1189 x 841mm  
60" x 40" - 1524mm x 1016mm

DISPLAY TYPE: Double sided, Base: Black, water/sand fillable base for extra stability. Supplied with in-built wheels for ease of movement.

PLEASE NOTE: All signs are available in this format. Please specify



## CORONAVIRUS INFECTION CONTROL WEDGE

PRODUCT CODE: 25636

SIZES AVAILABLE: 410mm (w) x 740mm (h)

DISPLAY TYPE: Double sided, Base: Heavy Duty PVC base

PLEASE NOTE: All signs are available in this format. Please specify



## PLEASE ENSURE SOCIAL DISTANCING BOLLARD COVERS

PRODUCT CODE: 25627

SIZES AVAILABLE: 200mm x 1000mm & 200mm x 1200mm

MATERIAL TYPES: Corriboard

COVER SHAPE: 3 sided triangular

PLEASE NOTE: All signs are available in this format. Please specify when ordering



## SOCIAL DISTANCING WINDMASTER DISPLAY STAND

PRODUCT CODE: 25675

SIZES AVAILABLE: A1 - 1554 x 780 x 500mm  
A0 - 1554 x 1010 x 625mm

DISPLAY TYPE: Double sided, weather resistant, wheeled compact moulded hollow base for water or sand weighting and easy to transport

PLEASE NOTE: All signs are available in this format. Please specify





## SOCIAL DISTANCING SPIDER STAKE

PRODUCT CODE: 25861

STAKE SIZE: 200mm x 660mm

SIGN INSERT SIZE: 600mm diameter

# External Use - Painting **Stencils**

**QUEUE HERE**





### CORONAVIRUS SOCIAL DISTANCING CIRCULAR STENCIL

PRODUCT CODE: 25663

SIZES AVAILABLE: 600 x 600mm

MATERIAL TYPES: 3mm Grey Polycraft (Rigid Polystyrene)



### CORONAVIRUS SOCIAL DISTANCING HUMAN LINE STENCIL

PRODUCT CODE: 25665

SIZES AVAILABLE: 2440 x 450mm

MATERIAL TYPES: 3mm Grey Polycraft (Rigid Polystyrene)



### CORONAVIRUS SOCIAL DISTANCING FACE LINE STENCIL

PRODUCT CODE: 25664

SIZES AVAILABLE: 2440 x 350mm

MATERIAL TYPES: 3mm Grey Polycraft (Rigid Polystyrene)



### COVID-19 QUEUE HERE STENCIL

PRODUCT CODE: 25741

SIZES AVAILABLE: 600 x 125mm

MATERIAL TYPES: 3mm Grey Polycraft (Rigid Polystyrene)

**COVID-19 VERTICAL HUMAN LINE STENCIL**

PRODUCT CODE: 25810

SIZES AVAILABLE: 350 x 2440mm

MATERIAL TYPES: 3mm Grey Polycraft (Rigid Polystyrene)

**PLEASE KEEP YOUR DISTANCE****COVID-19 PLEASE KEEP YOUR DISTANCE STENCIL**

PRODUCT CODE: 25829

SIZES AVAILABLE: 1200 x 200mm

MATERIAL TYPES: 3mm Grey Polycraft (Rigid Polystyrene)

**COVID-19 PLEASE KEEP YOUR DISTANCE HUMAN ARROW STENCIL**

PRODUCT CODE: 25664

SIZES AVAILABLE: 2440 x 350mm

MATERIAL TYPES: 3mm Grey Polycraft (Rigid Polystyrene)



021 431 1607



[sales@pdsigns.ie](mailto:sales@pdsigns.ie)



[www.pdsigns.ie](http://www.pdsigns.ie)